

FLORIDA DEPARTMENT OF ENVIRONMENTAL PROTECTION CERTIFIED CORNER RECORD

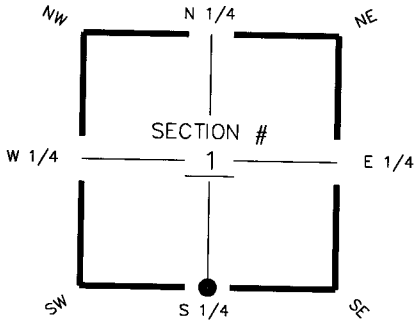
094412

DOC. # _____

CORNER DESCRIPTION:

Depict corner with **●**

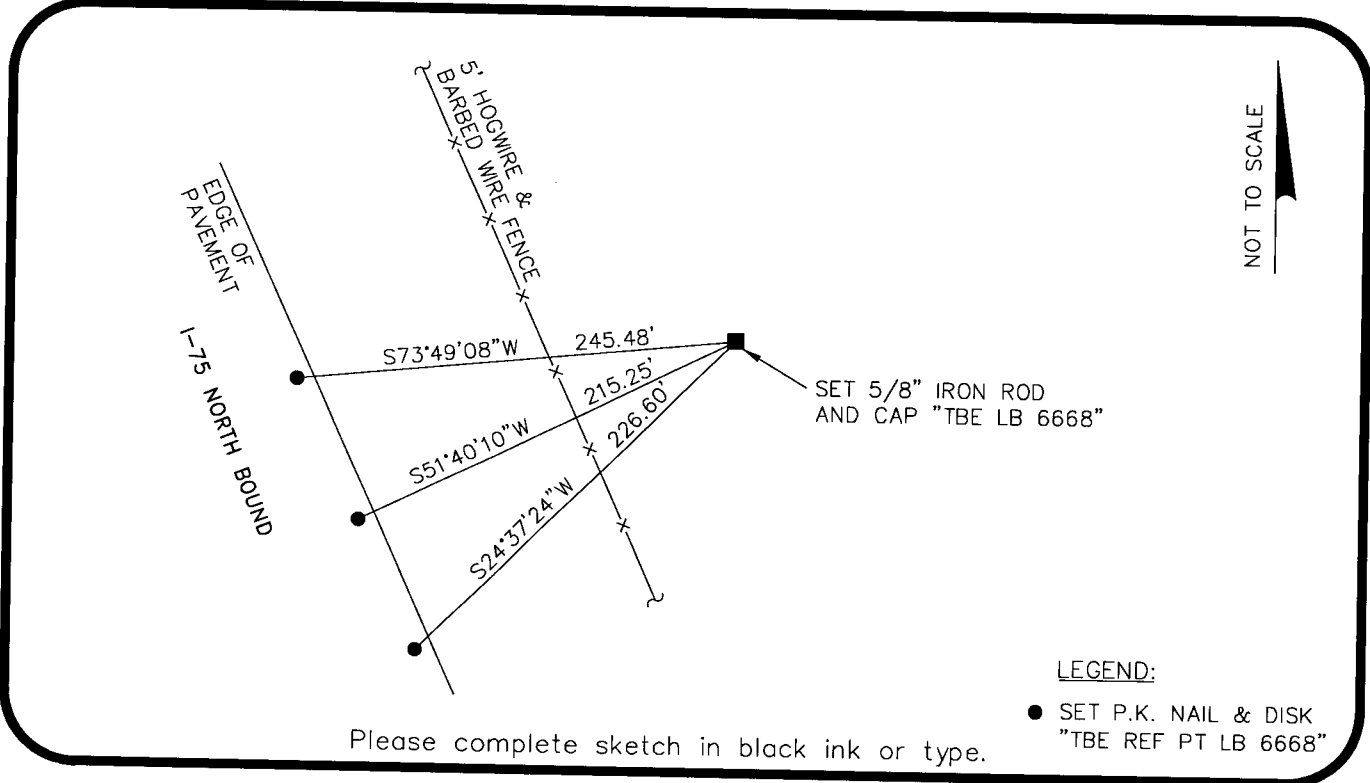
MONUMENTATION DESCRIPTION (EVIDENCE FOUND OR METHOD TO SET)
SET 5/8" IRON ROD AND CAP "TBE LB6668"



S 1/4 corner of Section 1
Twp 43 S, Rge 24 E
Tallahassee Base Meridian,
Charlotte County(s), Florida

HORIZONTAL POSITION INFORMATION (if determined):

Latitude 26°45'18.4366" Longitude 81°52'00.8905"
Y(NORTHING-Ft.) 880,180.698 X(EASTING-Ft.) 699,595.561 Zone FL West
Convergence 0°03'35.685" Scale factor 0.9999433389
Coordinate determination (circle one): Field traverse **GPS**
Horizontal datum (circle one): NAD27 NAD83(1986) **NAD83(1990)** other (explain) _____
Accuracy (circle one): 1st 2nd **3rd** other _____



Please complete sketch in black ink or type.

SURVEYORS CERTIFICATE:

I certify the monument and accessories indicated above were field located on 2/6/07

[Signature] 5196
SIGNATURE PSM NO.
TBE Group, Inc. 6668
FIRM OR AGENCY LB NO.
380 Park Place Blvd., Suite 300
ADDRESS
Clearwater, Florida 33759
CITY STATE ZIP
727.531.3505 DATE 2/6/08
PHONE NUMBER

SEND ORIGINAL TO:
Department of Environmental Protection
Bureau of Surveying and Mapping
3900 Commonwealth Boulevard
Mail Station 105
Tallahassee, Florida 32399

D.E.P. USE ONLY

Processed: 5-14-08 MB
B.L.M. - I.D. 640600
QUAD - I.D. 2315 TUCKER'S CORNER

EMBOSSSED SEAL OVER SIGNATURE