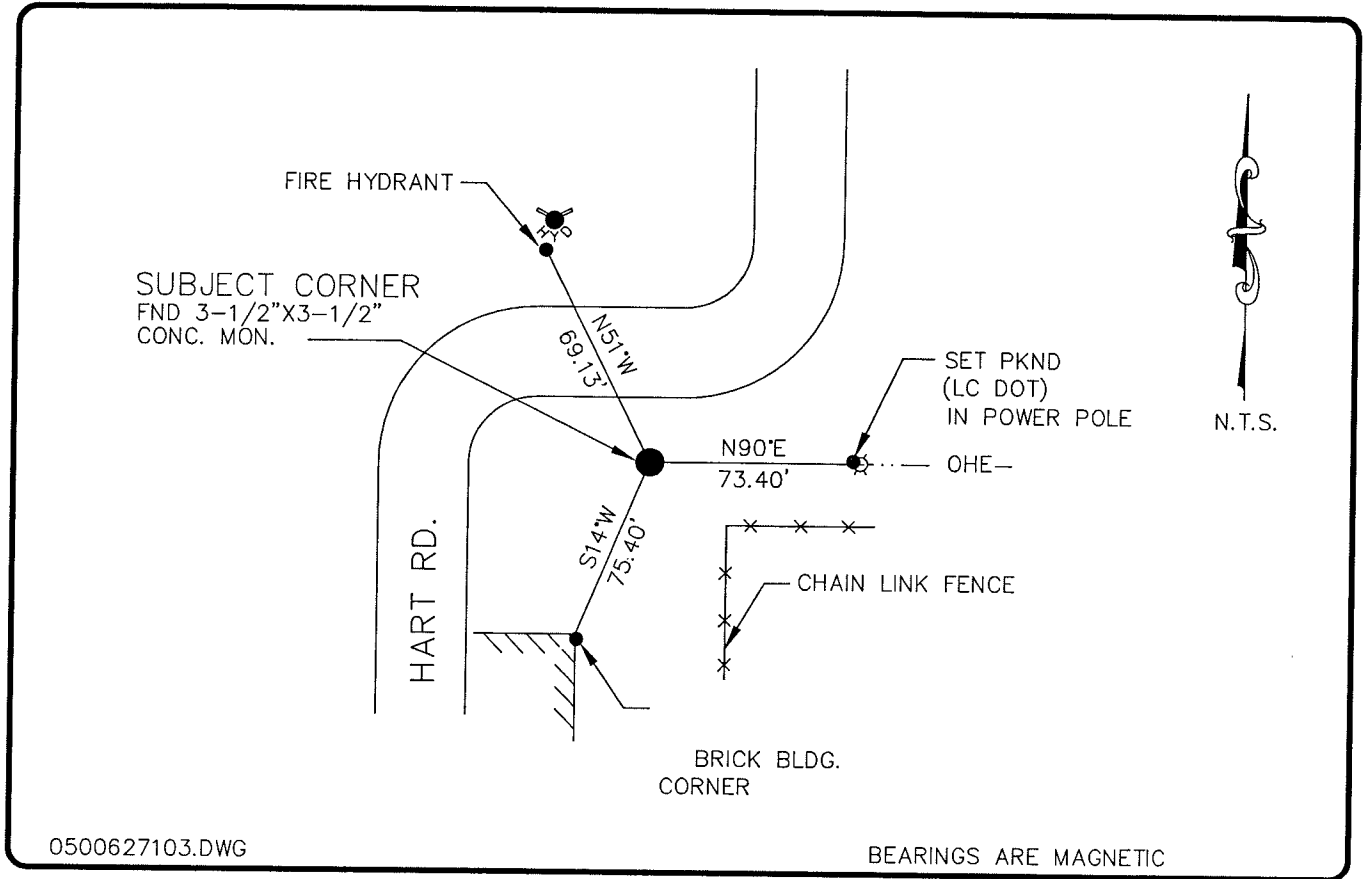


LAND CORNER RECORD

**PUBLIC WORKS
LEE COUNTY, FLORIDA**

Address - 1500 Monroe St., Ft. Myers, Fla. 33901

Phone : (239) 479-8900



0500627103.DWG

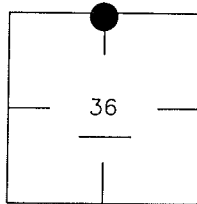
BEARINGS ARE MAGNETIC

COMMENTS:

FOUND 4"X4" CONC. MONUMENT
LOCATED BY STARNES AND NOTED
ON DOCUMENT NO. 14736.

CORNER DESCRIPTION

N 1/4 Corner
Section 36
Township 43
Range 25



HORIZONTAL POSITION INFORMATION

Florida West Zone, NAD 1983(1990 Adjustment)
Northing(ft) 858918.96 Easting(ft) 699668.36
Latitude 26°41'47.861798" Longitude 81°52'00.332716"
Scale Factor 0.99994334

EXISTING CERTIFIED CORNER RECORDS

Document No.	Date
<u>35216</u>	<u>3-29-90</u>

The above documents are based on FDEP Bureau of Surveying and Mapping Record Information.

I hereby certify the monument and accessories shown above were field located on 4-6-05.

(Signature)
Arthur W. Parsons, County Surveyor
Professional Surveyor and Mapper
Florida Certificate No. 2987
Date Signed 1-17-06

Lee County Department of Transportation
1500 Monroe Street
Fort Myers, Florida 33901
Phone: (239) 479-8900

POINT NO. 242

BLM REFERENCE NO. T43SR25E640200