

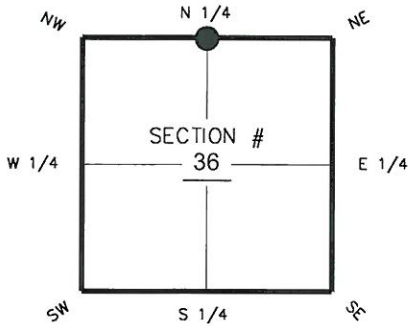
FLORIDA DEPARTMENT OF ENVIRONMENTAL PROTECTION CERTIFIED CORNER RECORD

DOC. # _____
BLM. # T43SR24E640200

CORNER DESCRIPTION: **MONUMENTATION DESCRIPTION (EVIDENCE FOUND OR METHOD TO SET)**

Depict corner with _____

FOUND 4" ROUND CONCRETE MONUMENT WITH ALUMINUM DISK
"SURVEY MARK LS 2848"



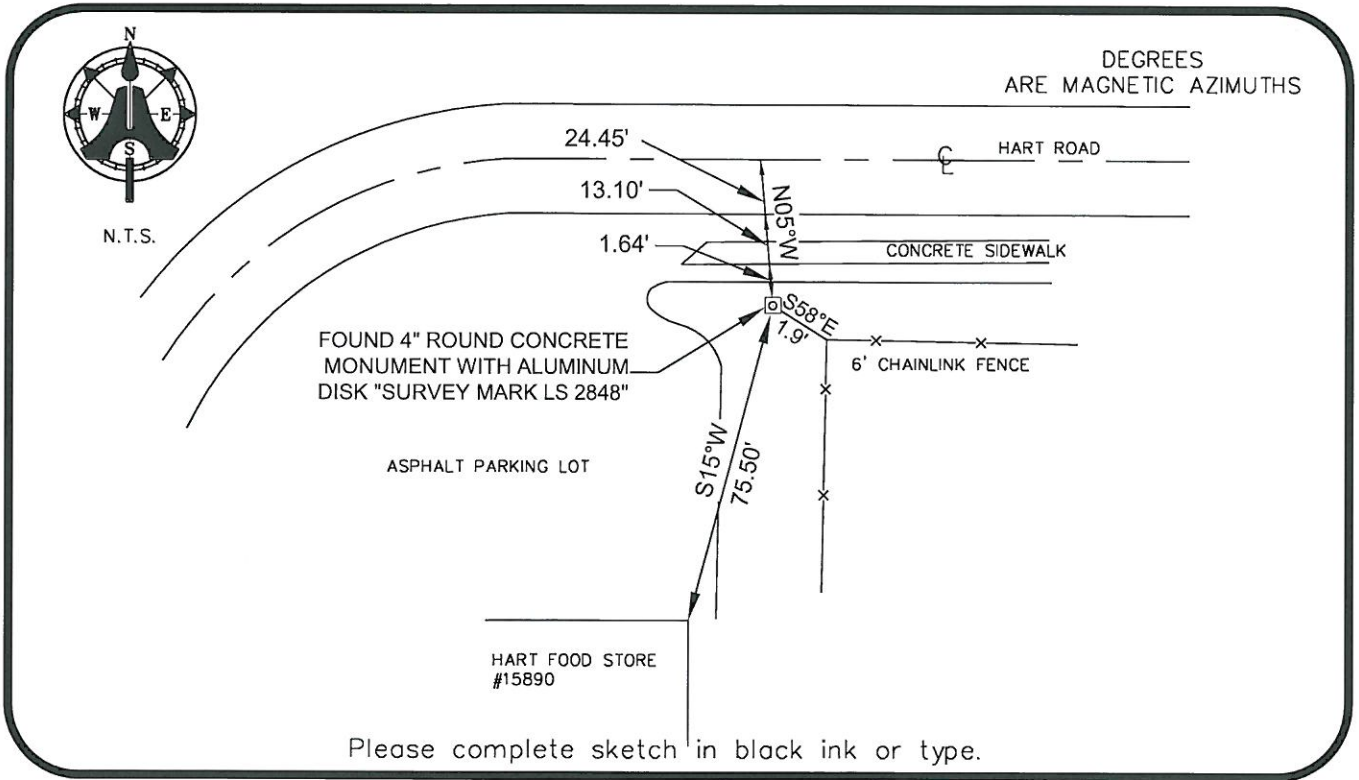
N 1/4 corner of Section 36
Twp 43 S, Rge 24 E
Tallahassee Base Meridian,
LEE County(s), Florida

PRIOR CCR'S:

DOC. # 0038701, 015277

HORIZONTAL POSITION INFORMATION (if determined):

Latitude 26°41'47.8641" N Longitude 81°52'00.3332" W
Y(NORTHING-Ft.) 858919.20 X(EASTING-Ft.) 699668.32 Zone WEST
Convergence 00°03'35.5" Scale factor 0.99994335
Coordinate determination: GPS
Horizontal datum: NAD83(NSRS2007)
Accuracy (circle one): 1st 2nd 3rd other 1:35,000



Please complete sketch in black ink or type.

SURVEYORS CERTIFICATE:

I certify the monument and accessories indicated above were field located on 01-08-2013

BEN R. HOMOLA

Ben R. Homola 3950
SIGNATURE PSM NO.

AIM ENGINEERING & SURVEYING, INC. 3114
FIRM OR AGENCY LB NO.

5300 LEE BOULEVARD
LEHIGH ACRES ADDRESS FL 33971

(239)332-4569 CITY STATE ZIP
PHONE NUMBER DATE 02/26/2013

EMBOSSSED SEAL OVER SIGNATURE

SEND ORIGINAL TO:
Department of Environmental Protection
Bureau of Surveying and Mapping
3900 Commonwealth Boulevard
Mail Station 105
Tallahassee, Florida 32399

D.E.P. USE ONLY
Processed: _____
B.L.M. - I.D. _____
QUAD - I.D. _____