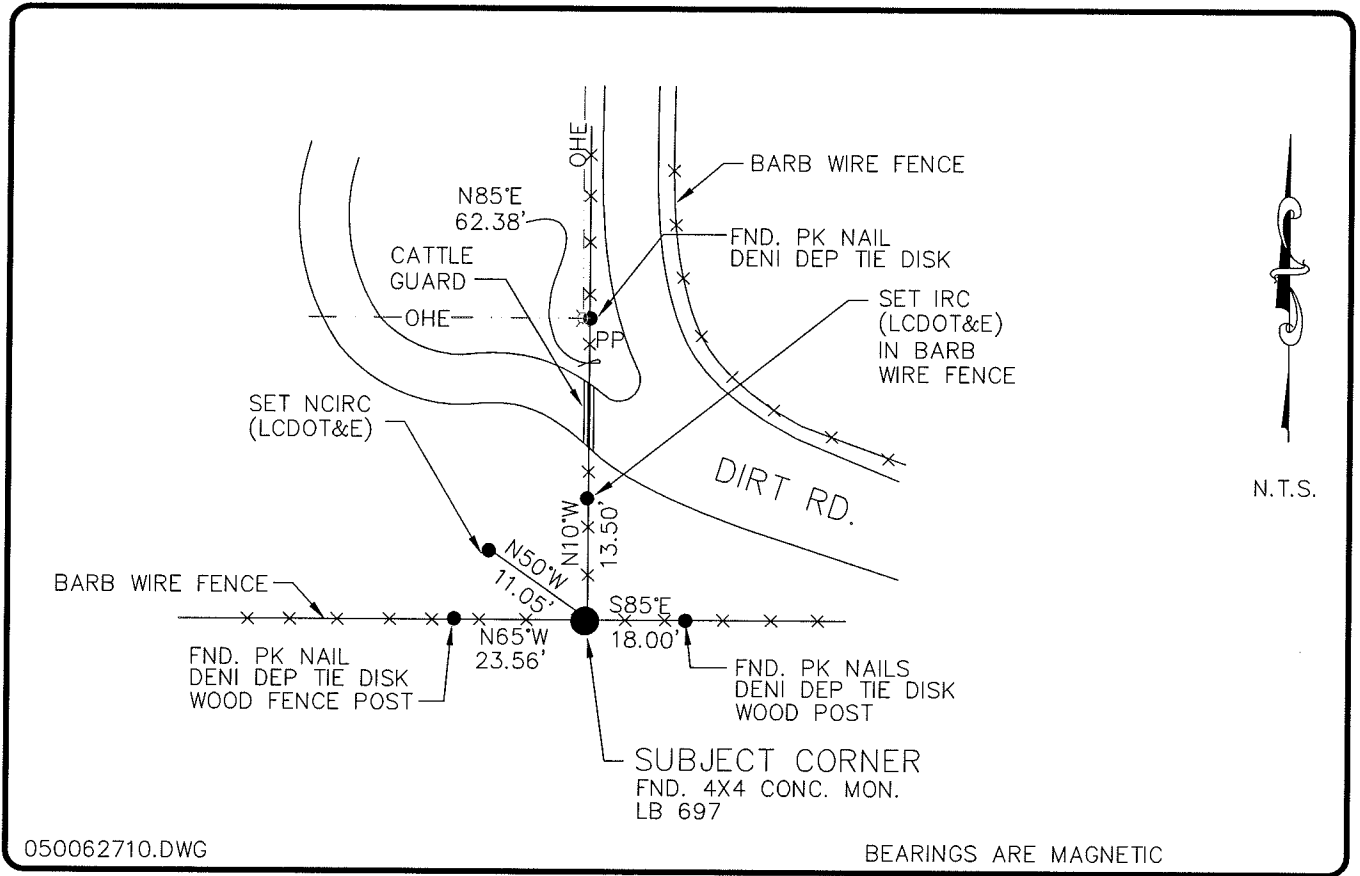


LAND CORNER RECORD

**PUBLIC WORKS
LEE COUNTY, FLORIDA**

Address - 1500 Monroe St., Ft. Myers, Fla. 33901

Phone : (239) 479-8900



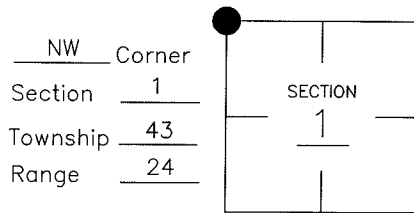
050062710.DWG

BEARINGS ARE MAGNETIC

COMMENTS:

FOUND CONC. MONUMENT SET BY CADASTRAL SURVEYORS OF CAPE CORAL, FL. L.B. NO. 697. MONUMENT FOUND AND REFERENCED IN BY BEN HOLOMA IN 2001.

CORNER DESCRIPTION



HORIZONTAL POSITION INFORMATION

Florida West Zone, NAD 1983(1990 Adjustment)
 Northing(ft) 885580.20 Easting(ft) 696985.70
 Latitude 26°46'11.93907" Longitude 81°52'29.62392"
 Scale Factor 0.99994308

EXISTING CERTIFIED CORNER RECORDS

Document No.	Date
<u>74753</u>	<u>12-17-01</u>

The above documents are based on FDEP Bureau of Surveying and Mapping Record Information.

I hereby certify the monument and accessories shown above were field located on 7-6-04.

Arthur W. Parsons
Arthur W. Parsons, County Surveyor
 Professional Surveyor and Mapper
 Florida Certificate No. 2987
 Date Signed 12-19-05

Lee County Department of Transportation
 1500 Monroe Street
 Fort Myers, Florida 33901
 Phone: (239) 479-8900

POINT NO. 4

BLM REFERENCE NO. T43SR25E600700

24