

FLORIDA DEPARTMENT OF ENVIRONMENTAL PROTECTION CERTIFIED CORNER RECORD

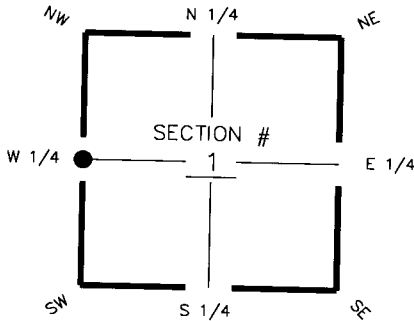
094413

DOC. # _____

CORNER DESCRIPTION:

Depict corner with

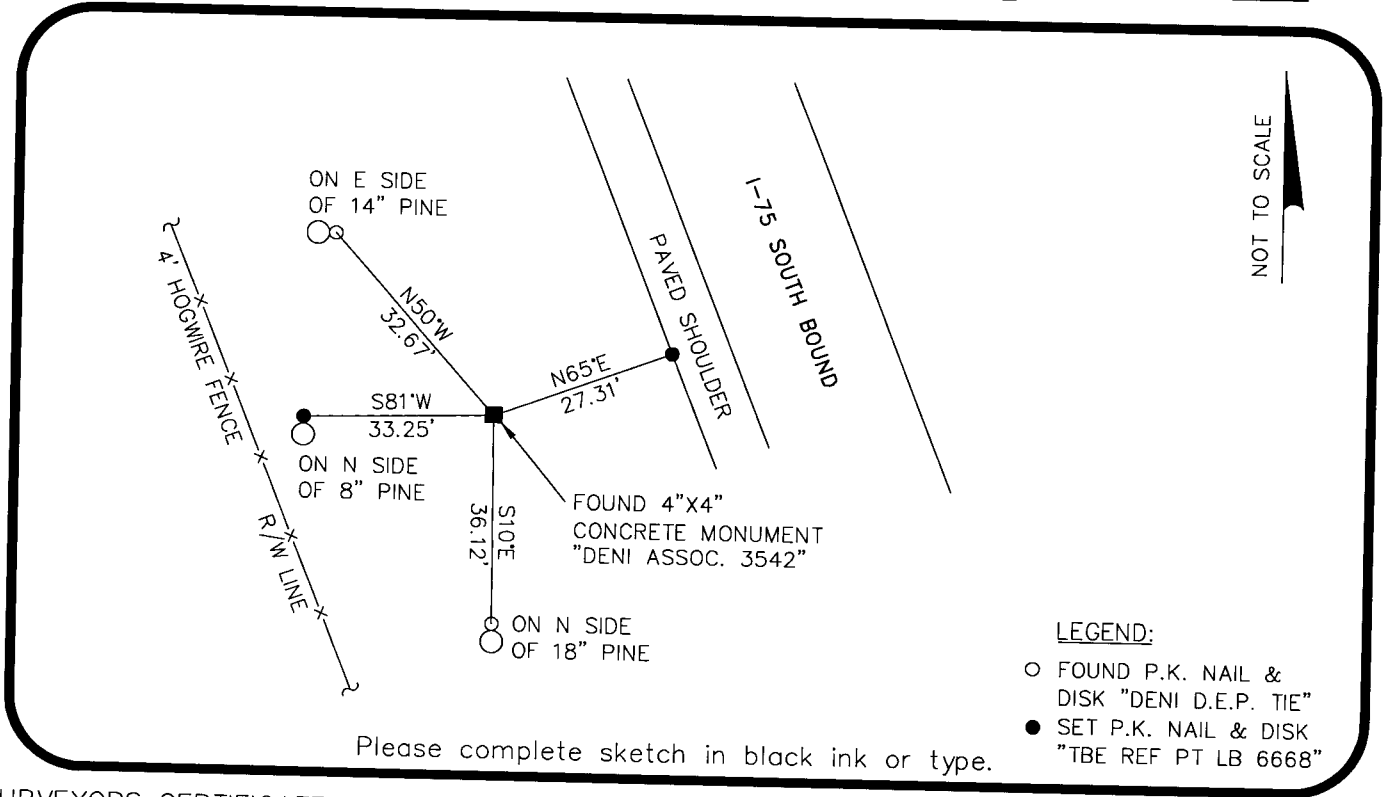
MONUMENTATION DESCRIPTION (EVIDENCE FOUND OR METHOD TO SET)
FOUND 4"X4" CONCRETE MONUMENT "DENI ASSOC. 3542"



W 1/4 corner of Section 1
Twp 43 S, Rge 24 E
Tallahassee Base Meridian,
Charlotte County(s), Florida

HORIZONTAL POSITION INFORMATION (if determined):

Latitude 26°45'45.1307" Longitude 81°52'30.3166"
Y(NORTHING-Ft.) 882,873.318 X(EASTING-Ft.) 696,925.585 Zone FL West
Convergence 0°03'22.490" Scale factor 0.9999430812
Coordinate determination (circle one): Field traverse GPS
Horizontal datum (circle one): NAD27 NAD83(1986) NAD83(1990) other (explain)
Accuracy (circle one): 1st 2nd 3rd other _____



LEGEND:
○ FOUND P.K. NAIL & DISK "DENI D.E.P. TIE"
● SET P.K. NAIL & DISK "TBE REF PT LB 6668"

SURVEYORS CERTIFICATE:

I certify the monument and accessories indicated above were field located on 2/6/07

[Signature] 5196
SIGNATURE PSM NO.
TBE Group, Inc. 6668
FIRM OR AGENCY LB NO.
380 Park Place Blvd., Suite 300
ADDRESS
Clearwater, Florida 33759
CITY STATE ZIP
727.531.3605 DATE 05/05/08
PHONE NUMBER

SEND ORIGINAL TO:
Department of Environmental Protection
Bureau of Surveying and Mapping
3900 Commonwealth Boulevard
Mail Station 105
Tallahassee, Florida 32399

D.E.P. USE ONLY

Processed: 5-14-08 MO
B.L.M. - I.D. WD0640
QUAD - I.D. 2315 TUCKER'S CORNER

EMBOSSSED SEAL OVER SIGNATURE