

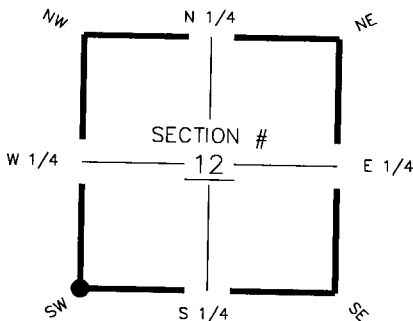
# FLORIDA DEPARTMENT OF ENVIRONMENTAL PROTECTION CERTIFIED CORNER RECORD

DOC. # 094422

**CORNER DESCRIPTION:**

Depict corner with

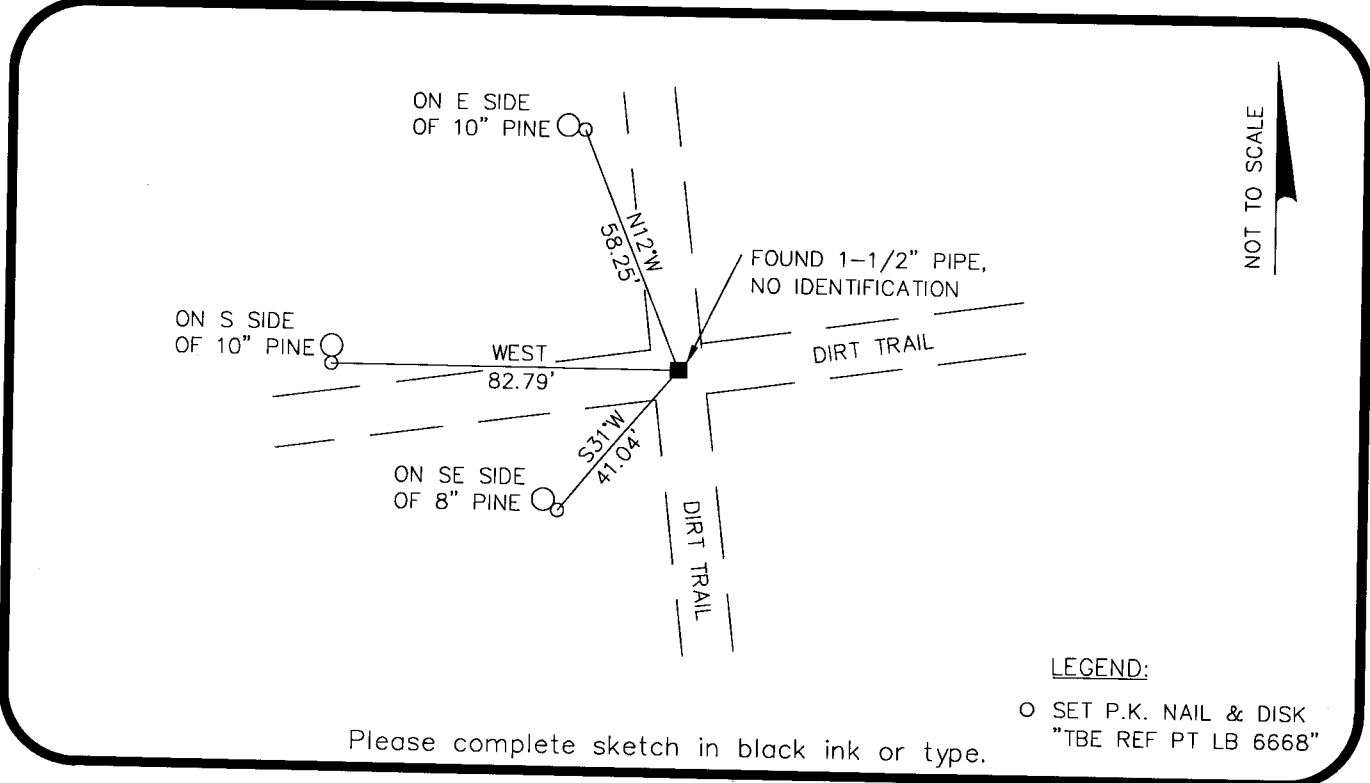
**MONUMENTATION DESCRIPTION (EVIDENCE FOUND OR METHOD TO SET)**  
FOUND 1-1/2" PIPE, NO IDENTIFICATION



SW corner of Section 12  
Twp 43 S, Rge 24 E  
Tallahassee Base Meridian,  
Charlotte County(s), Florida

**HORIZONTAL POSITION INFORMATION ( if determined ):**

Latitude 26°44'25.4287" Longitude 81°52'30.9830"  
Y(NORTHING-Ft.) 874,825.706 X(EASTING-Ft.) 696,873.066 Zone FL West  
Convergence 0°03'22.035" Scale factor 0.9999430763  
Coordinate determination (circle one): Field traverse  GPS  
Horizontal datum (circle one): NAD27 NAD83(1986)  NAD83(1990) other (explain)  
Accuracy (circle one): 1st 2nd  3rd other \_\_\_\_\_



**LEGEND:**

○ SET P.K. NAIL & DISK  
"TBE REF PT LB 6668"

Please complete sketch in black ink or type.

**SURVEYORS CERTIFICATE:**

I certify the monument and accessories indicated above were field located on 2/7/07

*[Signature]* 5196  
SIGNATURE PSM NO.  
TBE Group, Inc. 6668  
FIRM OR AGENCY LB NO.  
380 Park Place Blvd., Suite 300  
ADDRESS  
Clearwater, Florida 33759  
CITY STATE ZIP  
727.531.3505 05/05/09  
PHONE NUMBER DATE

SEND ORIGINAL TO:  
Department of Environmental Protection  
Bureau of Surveying and Mapping  
3900 Commonwealth Boulevard  
Mail Station 105  
Tallahassee, Florida 32399

Processed: 5-14-08 NTB  
B.L.M. - I.D. 600500  
QUAD - I.D. 2215 Fort Myers

EMBOSSSED SEAL OVER SIGNATURE