

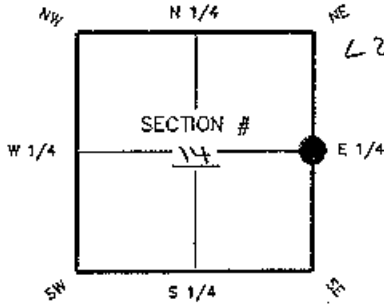
**FLORIDA DEPARTMENT OF ENVIRONMENTAL PROTECTION
CERTIFIED CORNER RECORD**

074766

DOC. # _____

CORNER DESCRIPTION: MONUMENTATION DESCRIPTION (EVIDENCE FOUND OR METHOD TO SET)

Depict corner with ●

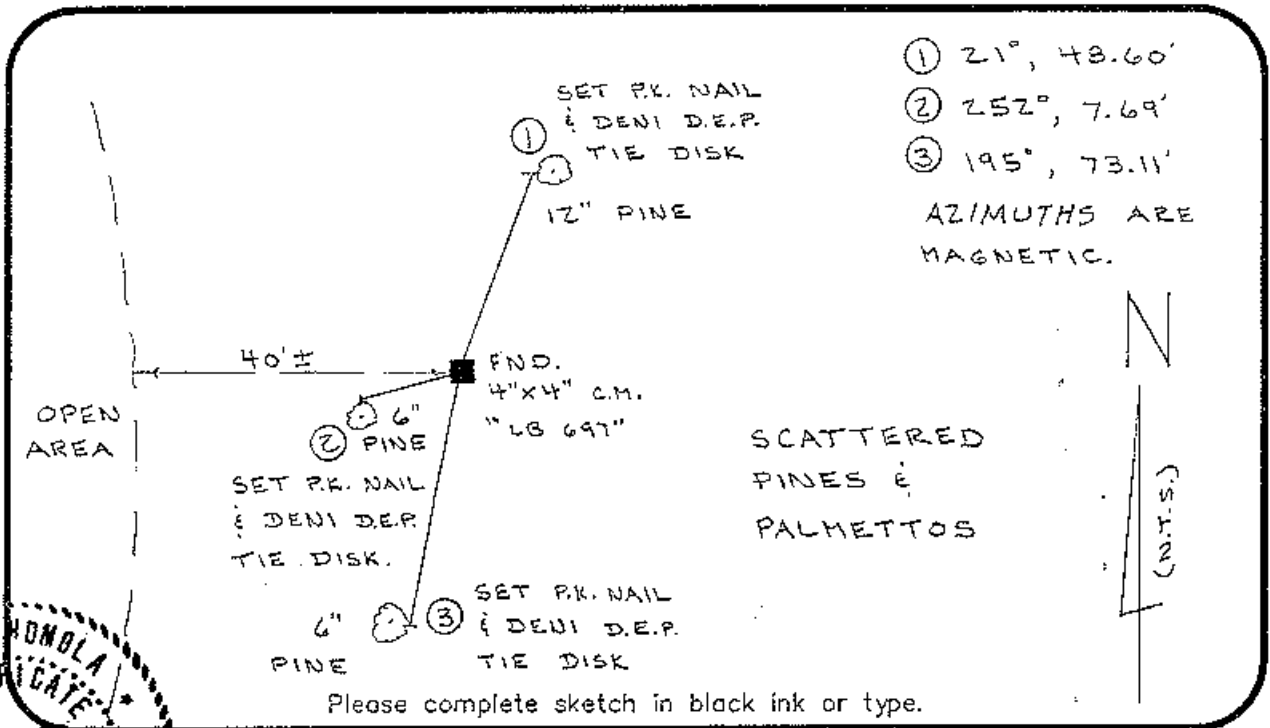


● FOUND 4"X4" C.M. W/CAP
"LB 697"

E 1/4 corner of Section 14
Twp 43 S, Rge 24 E
Tallahassee Base Meridian,
LEE County(s), Florida

HORIZONTAL POSITION INFORMATION (if determined):

Latitude 26°43'59.35797" Longitude 81°52'30.89504"
Y(NORTHING-Ft.) 872213.532 X(EASTING-Ft.) 696883.602 Zone WEST
Convergence 0°03'22.0" Scale factor 0.99994308
Coordinate determination (circle one): Field traverse GPS
Horizontal datum (circle one): NAD27 NAD83(1986) NAD83(1990) other (explain)
Accuracy (circle one): 1st 2nd 3rd other 1:50,000



- ① 21°, 48.60'
- ② 252°, 7.69'
- ③ 195°, 73.11'

AZIMUTHS ARE MAGNETIC.

SCATTERED
PINES &
PALMETTOS



SURVEYOR'S CERTIFICATE:
I certify the monument and accessories indicated above were field located on 12-13-01

Ben A. Honola 3950
SIGNATURE PSM NO.
DENI ASSOCIATES, INC. 3542
FIRM OR AGENCY LB NO.
6241 ARLWAY
ADDRESS
FORT MYERS FL STATE ZIP
CITY STATE ZIP
(941) 275-8875 2-20-02
PHONE NUMBER DATE

SEND ORIGINAL TO:
Department of Environmental Protection,
Bureau of Surveying and Mapping
3900 Commonwealth Boulevard
Mail Station 105
Tallahassee, Florida 32399

D.E.P. USE ONLY

Processed: 3-8-02 CS

B.L.M. - I.D. 600440

QUAD - I.D. 437 Fort Myers NW

EMBOSSED SEAL OVER SIGNATURE