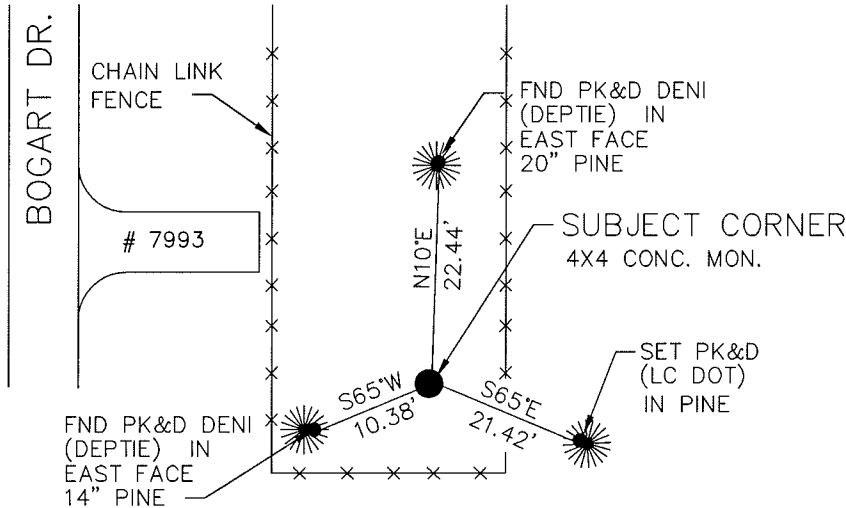
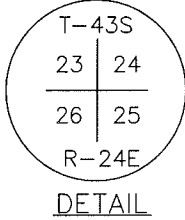


LAND CORNER RECORD

**PUBLIC WORKS
LEE COUNTY, FLORIDA**

Address - 1500 Monroe St., Ft. Myers, Fla. 33901

Phone : (239) 479-8900



NOTE:
FOUND 4"X4" CONC. MON.
WITH BRASS DISK STAMPED.
SEE DETAIL

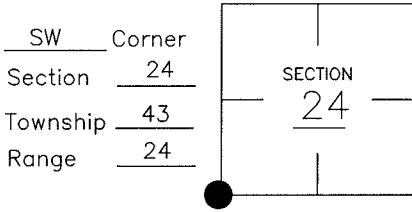
050062798.DWG

BEARINGS ARE MAGNETIC

COMMENTS:

FOUND 4"X4" CONC. MONUMENT WITH BRASS DISK AND CONFIRMED DENI DNR TIES SHOWN ON CCR 65325. STARNES SECTION MAP PLACES THIS MONUMENT 0.93'-S & 0.60'-W.

CORNER DESCRIPTION



HORIZONTAL POSITION INFORMATION

Florida West Zone, NAD 1983(1990 Adjustment)
 Northing(ft) 864233.56 Easting(ft) 696920.50
 Latitude 26°42'40.524681" Longitude 81°52'30.574295"
 Scale Factor 0.99994308

EXISTING CERTIFIED CORNER RECORDS

Document No.	Date
22042	9-24-85
65325	08-99

The above documents are based on FDEP Bureau of Surveying and Mapping Record Information.

I hereby certify the monument and accessories shown above were field located on 7-6-04.

Arthur W. Parsons, County Surveyor
 Professional Surveyor and Mapper
 Florida Certificate No. 2987
 Date Signed 12-19-05

Lee County Department of Transportation
 1500 Monroe Street
 Fort Myers, Florida 33901
 Phone: (239) 479-8900

POINT NO. 57

BLM REFERENCE NO. T43SR24E600300