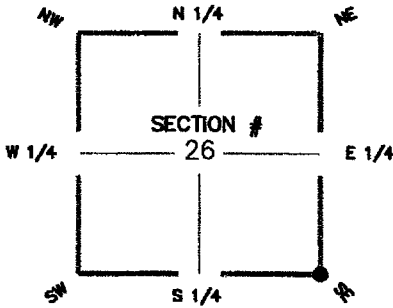


FLORIDA DEPARTMENT OF ENVIRONMENTAL PROTECTION CERTIFIED CORNER RECORD

093409

DOC. # _____

CORNER DESCRIPTION: **MONUMENTATION DESCRIPTION (EVIDENCE FOUND OR METHOD TO SET)**



FOUND 3" X 3" CONCRETE MONUMENT WITH DISK STAMPED "STARNES & ASSOC." PLS-2465. RECORD FILED TO SHOW NEW REFERENCES TO SECTION CORNER ON CERTIFIED CORNER RECORD, DOCUMENT #065338.

HORIZONTAL POSITION INFORMATION

Latitude _____ Longitude _____
 Y(NORTHING-Ft.) 858926.717 X(EASTING-Ft.) 696944.812 Zone FL-W

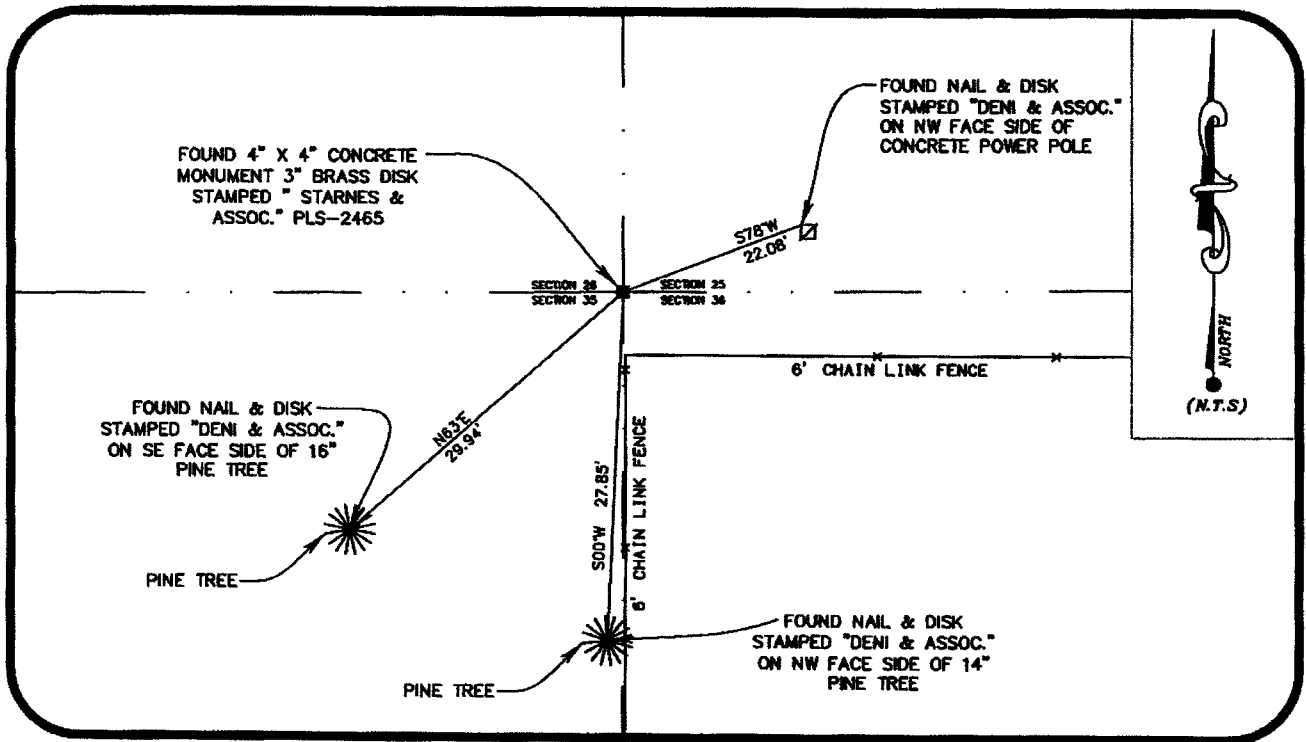
Convergence _____ Scale factor _____

Coordinate determination (circle one): Field traverse **GPS**

Horizontal datum (circle one): NAD27 NAD83(1986) **NAD83(1990)** other (explain)

Accuracy (circle one): 1st 2nd **3rd** other _____

SE corner of Section 26
 Twp 43 S., Rge 24 E.
 Tallahassee Base Meridian,
LEE County(s), Florida



SURVEYORS CERTIFICATE:

I certify the monument and accessories indicated above were field located on 11/27/2007

P. O. O'Day L.S. 5588

WILSONMILLER INC. PSM NO. 043

15438 N. FLORIDA AVE. MAGDALENE CTR. SUITE #200

TAMPA FLORIDA 33613

(813) 963-0389 01/25/2008

EMBOSSED SEAL OVER SIGNATURE

SEND ORIGINAL TO:
 Department of Environmental Protection
 Bureau of Surveying and Mapping
 3900 Commonwealth Boulevard
 Mail Station 105
 Tallahassee, Florida 32399

Processed: 2-23-08 MB
 B.L.M. - I.D. 600200
 QUAD - I.D. 2216 Fort Myers NW