

FLORIDA DEPARTMENT OF ENVIRONMENTAL PROTECTION CERTIFIED CORNER RECORD

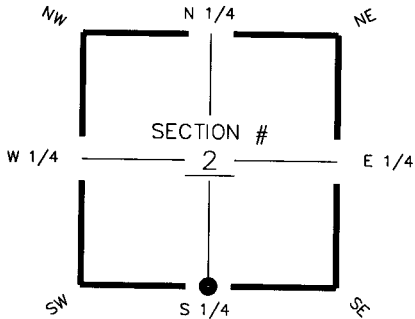
094415

DOC. # _____

CORNER DESCRIPTION:

Depict corner with **●**

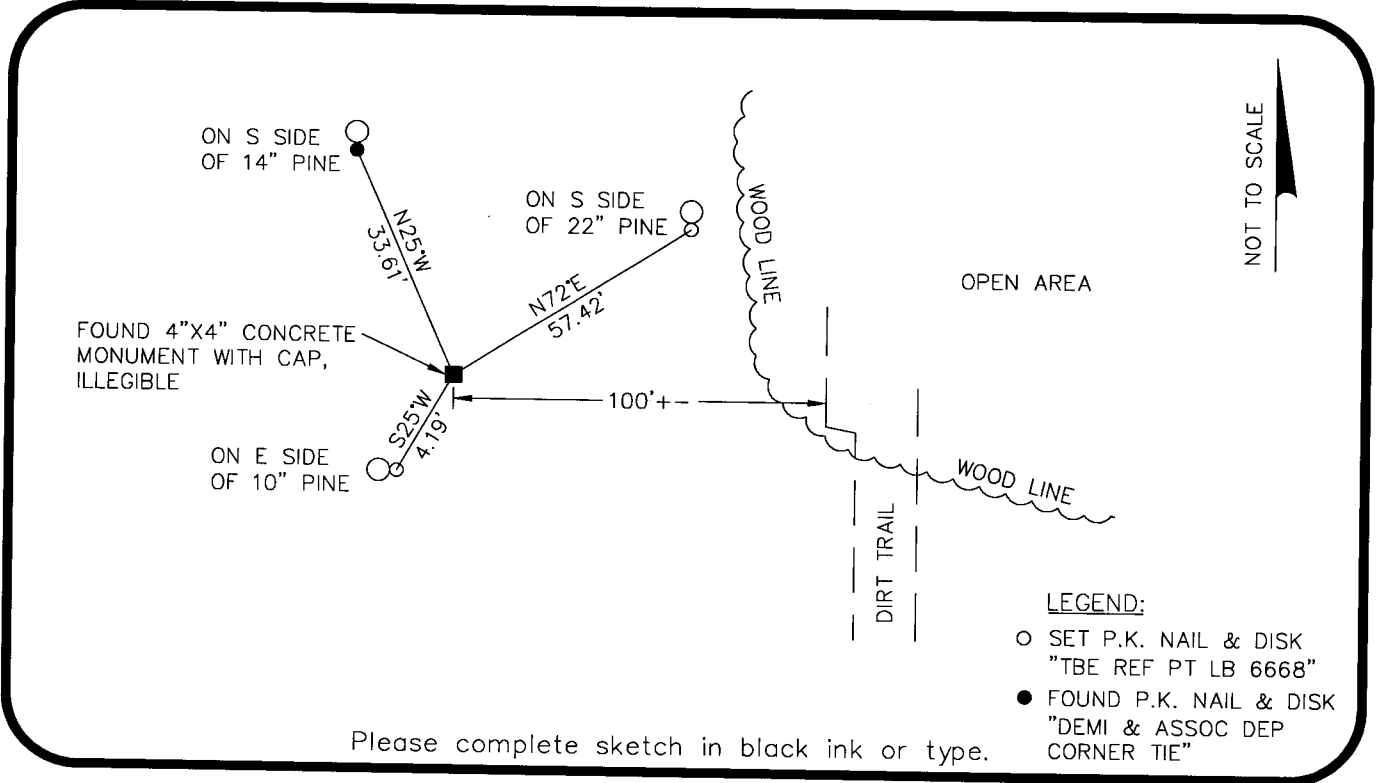
MONUMENTATION DESCRIPTION (EVIDENCE FOUND OR METHOD TO SET)
FOUND 4"x4" CONCRETE MONUMENT WITH CAP, ILLEGIBLE



S 1/4 corner of Section 2
Twp 43 S, Rge 24 E
Tallahassee Base Meridian,
Charlotte County(s), Florida

HORIZONTAL POSITION INFORMATION (if determined):

Latitude 26°45'18.7907" Longitude 81°53'00.0770"
Y(NORTHING-Ft.) 880,211.194 X(EASTING-Ft.) 694,230.568 Zone FL West
Convergence 0°03'09.041" Scale factor 0.9999428376
Coordinate determination (circle one): Field traverse GPS
Horizontal datum (circle one): NAD27 NAD83(1986) NAD83(1990) other (explain)
Accuracy (circle one): 1st 2nd 3rd other _____



NOT TO SCALE

LEGEND:
○ SET P.K. NAIL & DISK "TBE REF PT LB 6668"
● FOUND P.K. NAIL & DISK "DEMI & ASSOC DEP CORNER TIE"

Please complete sketch in black ink or type.

SURVEYORS CERTIFICATE:

I certify the monument and accessories indicated above were field located on 2/7/07

[Signature]
SIGNATURE _____ 5196
TBE Group, Inc. PSM NO. 6668
FIRM OR AGENCY LB NO. _____
380 Park Place Blvd., Suite 300 ADDRESS
Clearwater, Florida 33759
727.531.3505 CITY STATE ZIP
PHONE NUMBER DATE 05/05/08

SEND ORIGINAL TO:
Department of Environmental Protection
Bureau of Surveying and Mapping
3900 Commonwealth Boulevard
Mail Station 105
Tallahassee, Florida 32399

DEP. USE ONLY
Processed: 5-14-08 MB
B.L.M. - I.D. 540600
QUAD - I.D. 2316 Gilchrist

EMBOSSSED SEAL OVER SIGNATURE