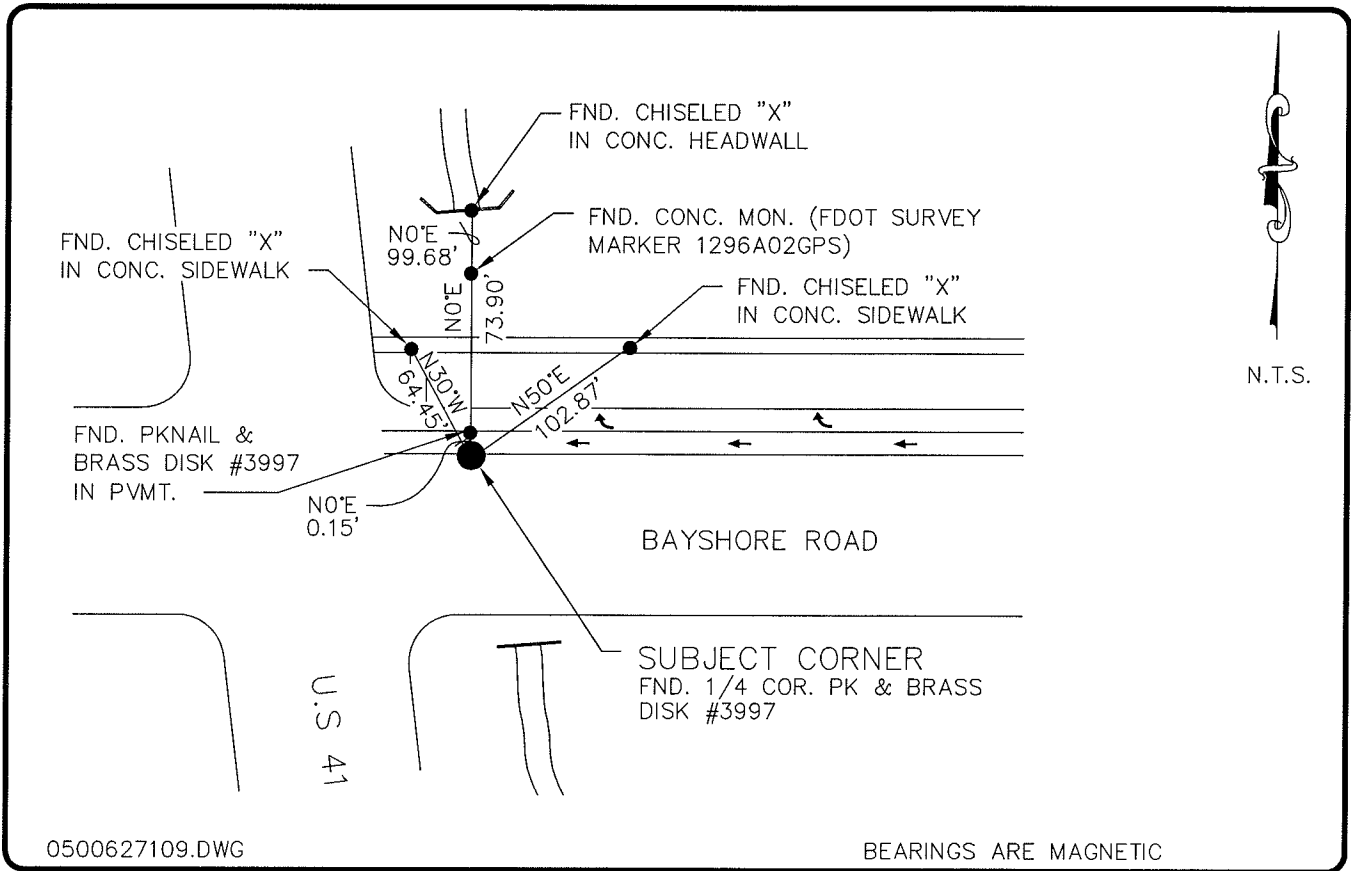


**LAND CORNER RECORD**

**PUBLIC WORKS  
LEE COUNTY, FLORIDA**

Address - 1500 Monroe St., Ft. Myers, Fla. 33901

Phone : (239) 479-8900



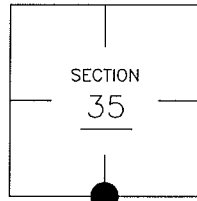
0500627109.DWG

BEARINGS ARE MAGNETIC

**COMMENTS:**

**CORNER DESCRIPTION**

S1/4 Corner  
Section 35  
Township 43  
Range 24



**HORIZONTAL POSITION INFORMATION**

Florida West Zone, NAD 1983(1990 Adjustment)  
Northing(ft) 853648.23 Easting(ft) 694315.26  
Latitude 26°40'55.712730" Longitude 81°52'59.411286"  
Scale Factor 0.99994284

**EXISTING CERTIFIED CORNER RECORDS**

Document No.	Date
<u>15268</u>	<u>10-1-82</u>
<u>31996</u>	<u>4-11-89</u>
<u>37077</u>	<u>10-25-90</u>
<u>55645</u>	<u>1-30-96</u>

The above documents are based on FDEP Bureau of Surveying and Mapping Record Information.

I hereby certify the monument and accessories shown above were field located on 4-21-05.

*(Signature)*  
**Arthur W. Parsons, County Surveyor**  
Professional Surveyor and Mapper  
Florida Certificate No. 2987  
Date Signed 1-17-06

Lee County Department of Transportation  
1500 Monroe Street  
Fort Myers, Florida 33901  
Phone: (239) 479-8900

POINT NO. 250

BLM REFERENCE NO. T43SR24E540100