

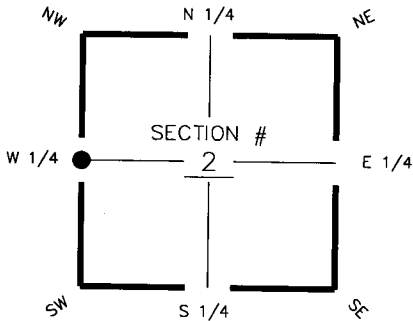
FLORIDA DEPARTMENT OF ENVIRONMENTAL PROTECTION CERTIFIED CORNER RECORD

DOC. # 094417

CORNER DESCRIPTION:

Depict corner with **●**

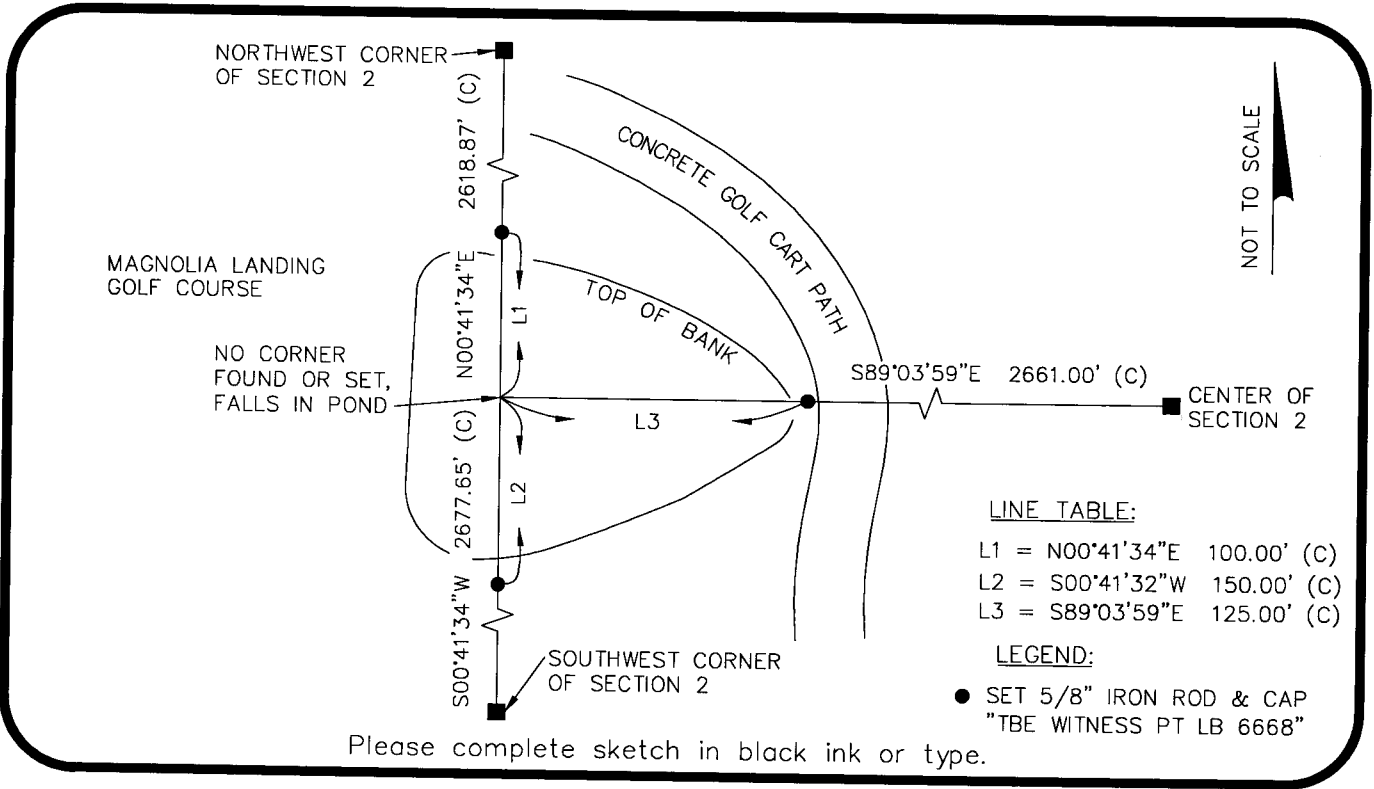
MONUMENTATION DESCRIPTION (EVIDENCE FOUND OR METHOD TO SET)
NO CORNER FOUND OR SET. CORNER FALLS IN POND. SET WITNESS POINTS ON LINE.



W 1/4 corner of Section 2
Twp 43 S, Rge 24 E
Tallahassee Base Meridian,
Charlotte County(s), Florida

HORIZONTAL POSITION INFORMATION (if determined):

Latitude 26°45'46.0339" Longitude 81°53'28.7549"
Y(NORTHING-Ft.) 882,959.661 X(EASTING-Ft.) 691,628.706 Zone FL West
Convergence 0°02'56.177" Scale factor 0.9999426183
Coordinate determination (circle one): Field traverse **GPS**
Horizontal datum (circle one): NAD27 NAD83(1986) **NAD83(1990)** other (explain)
Accuracy (circle one): 1st 2nd **3rd** other _____



LINE TABLE:
L1 = N00°41'34"E 100.00' (C)
L2 = S00°41'32"W 150.00' (C)
L3 = S89°03'59"E 125.00' (C)

LEGEND:
● SET 5/8" IRON ROD & CAP
"TBE WITNESS PT LB 6668"

Please complete sketch in black ink or type.

SURVEYORS CERTIFICATE:

I certify the monument and accessories indicated above were field located on 2/8/07

[Signature]
SIGNATURE _____ 5196
TBE Group, Inc. PSM NO. 6668
FIRM OR AGENCY _____ LB NO. _____
380 Park Place Blvd., Suite 300
ADDRESS _____
Clearwater, Florida 33759
CITY STATE ZIP
727.531.3505 PHONE NUMBER
DATE 05/05/08

SEND ORIGINAL TO:
Department of Environmental Protection
Bureau of Surveying and Mapping
3900 Commonwealth Boulevard
Mail Station 105
Tallahassee, Florida 32399

Processed: 5-DFP-08 MB
B.L.M. - I.D. 500640
QUAD - I.D. 2316 Oilchist

EMBOSSSED SEAL OVER SIGNATURE