

# FLORIDA DEPARTMENT OF ENVIRONMENTAL PROTECTION CERTIFIED CORNER RECORD

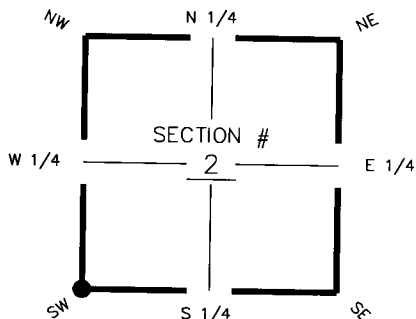
**094416**

DOC. # \_\_\_\_\_

CORNER DESCRIPTION:

Depict corner with

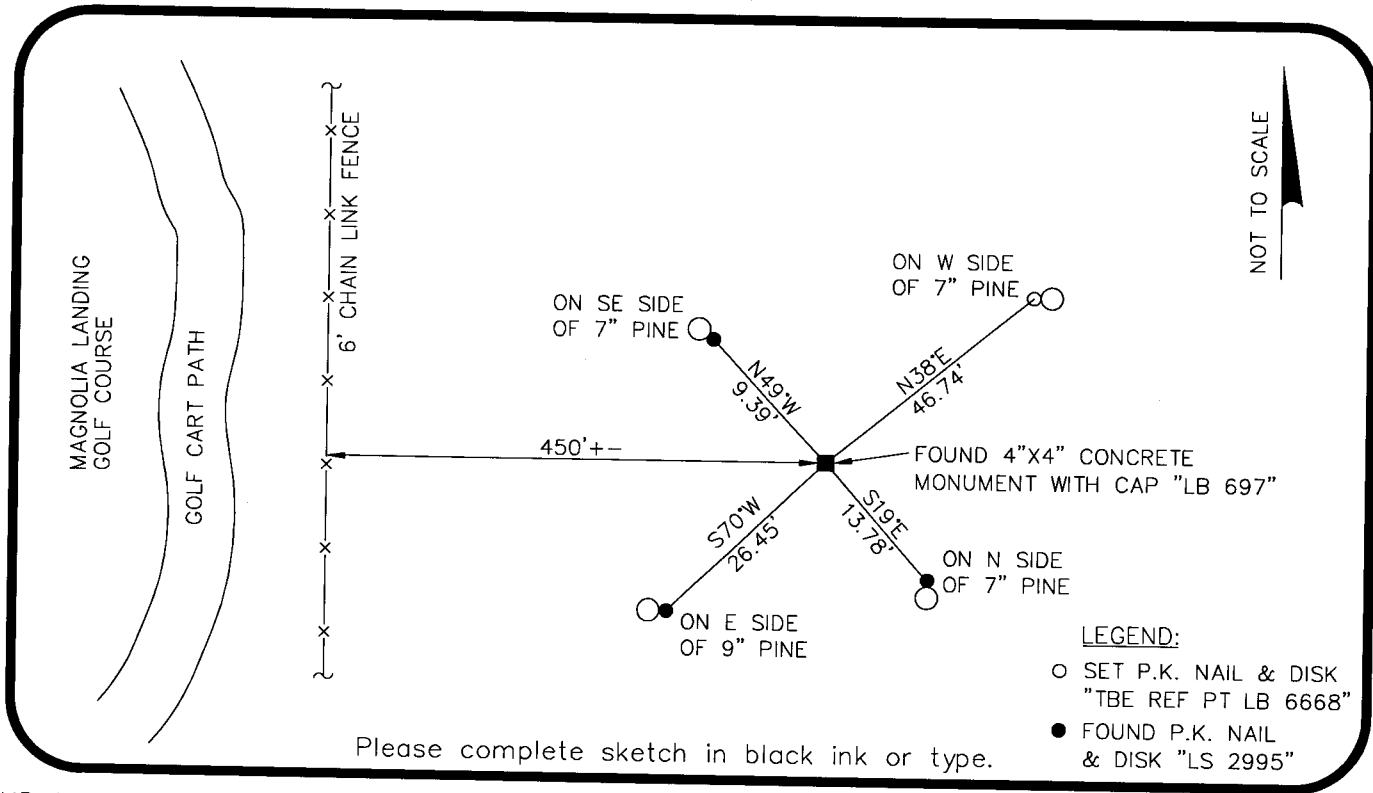
MONUMENTATION DESCRIPTION (EVIDENCE FOUND OR METHOD TO SET)  
FOUND 4"x4" CONCRETE MONUMENT WITH CAP "LB697"



SW corner of Section 2  
Twp 43 S, Rge 24 E  
Tallahassee Base Meridian,  
Charlotte County(s), Florida

HORIZONTAL POSITION INFORMATION ( if determined ):

Latitude 26°45'19.5171" Longitude 81°53'29.1369"  
Y(NORTHING-Ft.) 880,282.206 X(EASTING-Ft.) 691,596.363 Zone FL West  
Convergence 0°02'55.960" Scale factor 0.9999426156  
Coordinate determination (circle one): Field traverse (GPS)  
Horizontal datum (circle one): NAD27 NAD83(1986) (NAD83(1990)) other (explain)  
Accuracy (circle one): 1st 2nd (3rd) other \_\_\_\_\_



Please complete sketch in black ink or type.

LEGEND:

- SET P.K. NAIL & DISK "TBE REF PT LB 6668"
- FOUND P.K. NAIL & DISK "LS 2995"

SURVEYORS CERTIFICATE:

I certify the monument and accessories indicated above were field located on 2/8/07

[Signature] 5196  
TBE Group, Inc. PSM NO. 6668  
380 Park Place Blvd., Suite 300 LB NO. \_\_\_\_\_  
Clearwater, Florida 33759  
727.531.3505 DATE 05/05/08

SEND ORIGINAL TO:  
Department of Environmental Protection  
Bureau of Surveying and Mapping  
3900 Commonwealth Boulevard  
Mail Station 105  
Tallahassee, Florida 32399

Processed: 5-14-08 WB  
B.L.M. - I.D. 500600  
QUAD - I.D. 2316 Gilchrist

EMBOSSSED SEAL OVER SIGNATURE