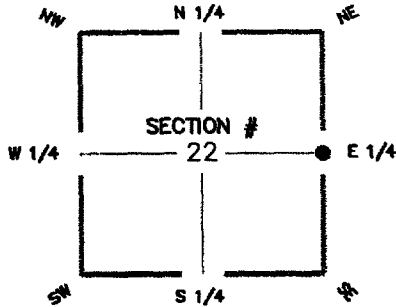


**FLORIDA DEPARTMENT OF ENVIRONMENTAL PROTECTION  
CERTIFIED CORNER RECORD**

093403

DOC. # \_\_\_\_\_

CORNER DESCRIPTION: MONUMENTATION DESCRIPTION (EVIDENCE FOUND OR METHOD TO SET)



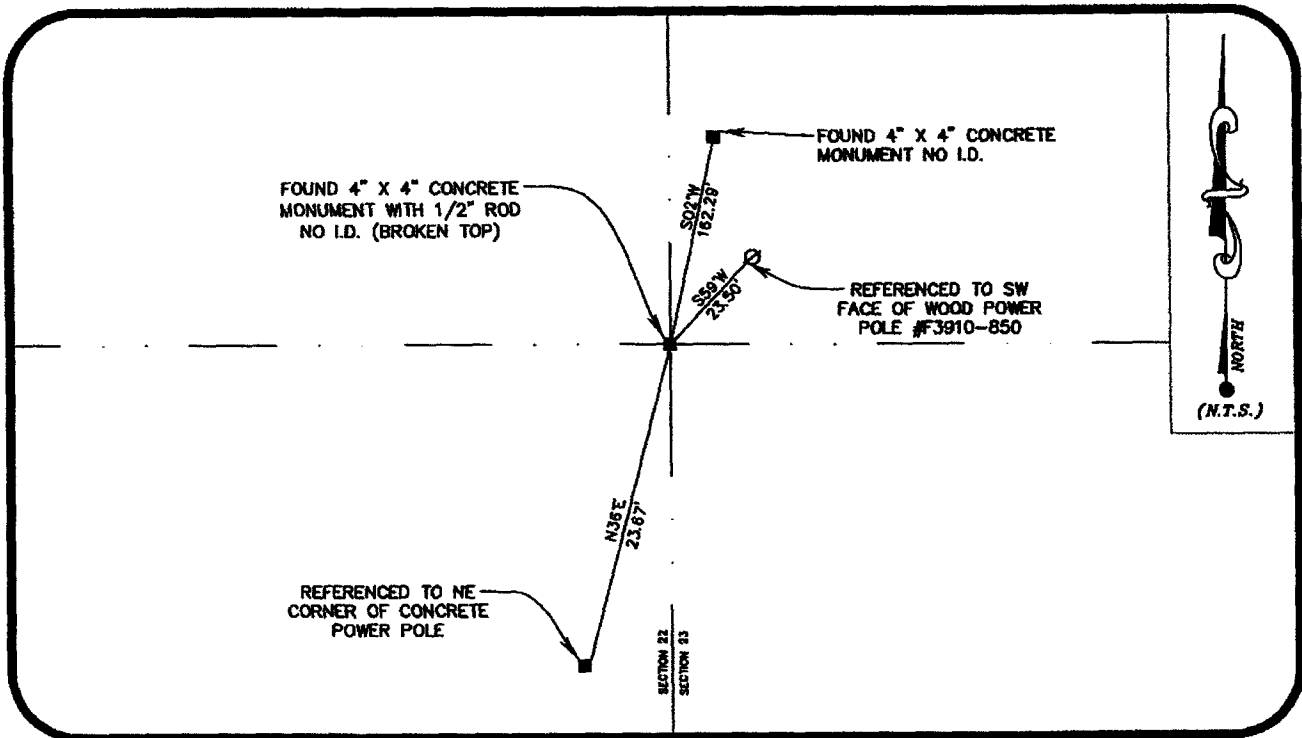
FOUND 4" X 4" CONCRETE MONUMENT WITH 1/2" ROD (BROKEN TOP) NO I.D. RECORD FILED TO SHOW NEW REFERENCES TO SECTION CORNER ON CERTIFIED CORNER RECORD, DOCUMENT #0036567.

HORIZONTAL POSITION INFORMATION

Latitude \_\_\_\_\_ Longitude \_\_\_\_\_  
 Y(NORTHING-Ft.) 866937.960 X(EASTING-Ft.) 691636.057 Zone FL-W  
 Convergence \_\_\_\_\_ Scale factor \_\_\_\_\_

E 1/4 corner of Section 22  
 Twp 43 S., Rge 24 E.  
 Tallahassee Base Meridian,  
LEE County(s), Florida

Coordinate determination (circle one): Field traverse (GPS)  
 Horizontal datum (circle one): NAD27 NAD83(1986) (NAD83(1990)) other (explain) \_\_\_\_\_  
 Accuracy (circle one): 1st 2nd (3rd) other \_\_\_\_\_



SURVEYORS CERTIFICATE:

I certify the monument and accessories indicated above were field located on 11/27/2007

Paul R. O'Day L.S. 5588  
 SIGNATURE

SEND ORIGINAL TO:  
 Department of Environmental Protection  
 Bureau of Surveying and Mapping  
 3900 Commonwealth Boulevard  
 Mail Station 105  
 Tallahassee, Florida 32399

WILSONMILLER INC. PSM NO. 043  
 FIRM OR AGENCY LB NO.  
15438 N. FLORIDA AVE. MAGDALENE CTR. SUITE #200  
 ADDRESS  
TAMPA FLORIDA 33613  
 CITY STATE ZIP  
(813) 963-0389 01/25/2008  
 PHONE NUMBER DATE

Processed:	<u>2-23-08</u> <u>mrb</u>
B.L.M. - I.D.	<u>500340</u>
QUAD - I.D.	<u>2016 Ft. Myers NW</u>

EMBOSSSED SEAL OVER SIGNATURE