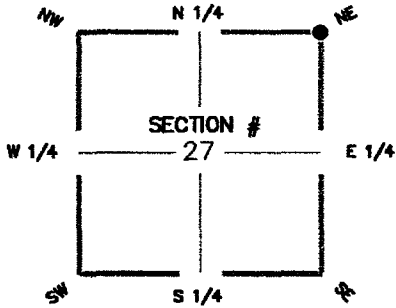


# FLORIDA DEPARTMENT OF ENVIRONMENTAL PROTECTION CERTIFIED CORNER RECORD

DOC. # 093414

CORNER DESCRIPTION: MONUMENTATION DESCRIPTION (EVIDENCE FOUND OR METHOD TO SET)



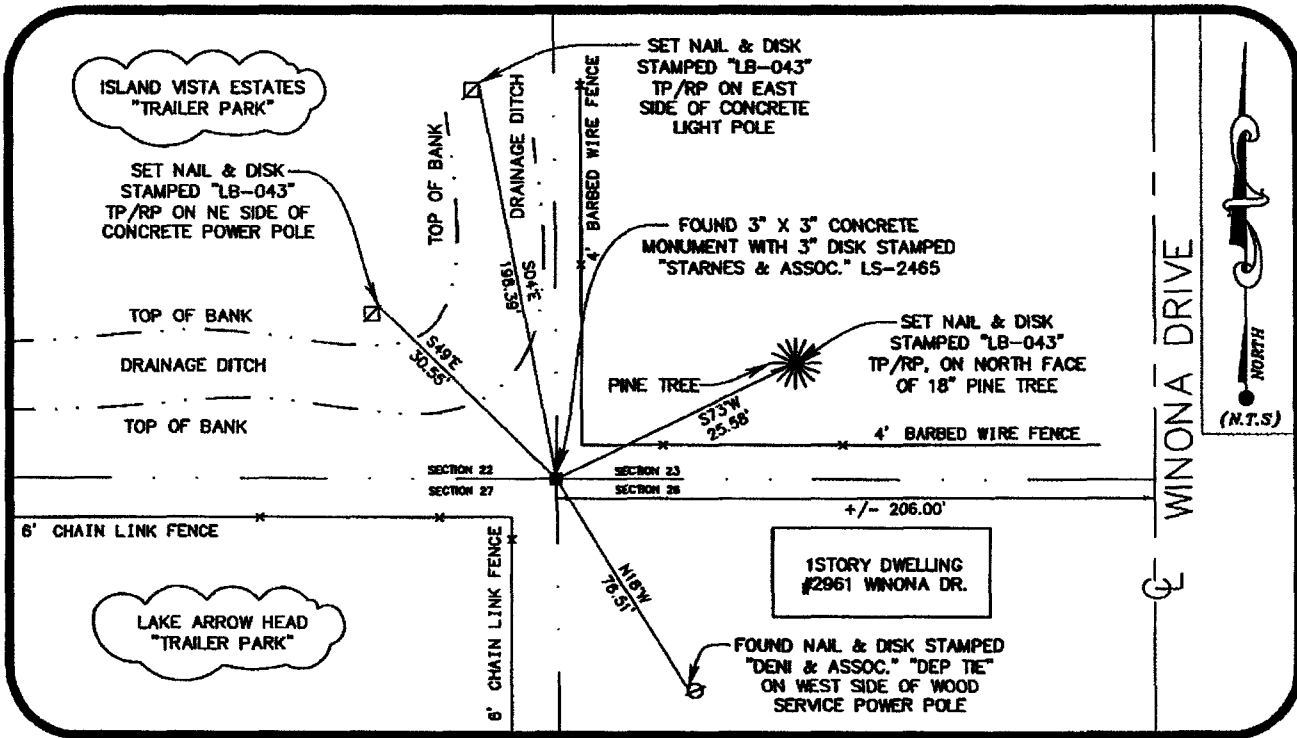
FOUND 3.5" X 3.5" CONCRETE MONUMENT WITH 2" DISK STAMPED "STARNES & ASSOC." LS-2465. RECORD FILED TO SHOW NEW REFERENCES TO SECTION CORNER ON CERTIFIED CORNER RECORD, DOCUMENT #65332.

HORIZONTAL POSITION INFORMATION

Latitude \_\_\_\_\_ Longitude \_\_\_\_\_  
 Y(NORTHING-Ft.) 864287.988 X(EASTING-Ft.) 691633.975 Zone FL-W

Convergence \_\_\_\_\_ Scale factor \_\_\_\_\_  
 Coordinate determination (circle one): Field traverse (GPS)  
 Horizontal datum (circle one): NAD27 NAD83(1986) (NAD83(1990)) other (explain) \_\_\_\_\_  
 Accuracy (circle one): 1st 2nd (3rd) other \_\_\_\_\_

NE corner of Section 27  
Twp 43 S., Rge 24 E.  
Tallahassee Base Meridian,  
LEE County(s), Florida



SURVEYORS CERTIFICATE:

I certify the monument and accessories indicated above were field located on 05/28/2007

Wilson Miller, Inc. L.S. 5588  
 SIGNATURE: [Signature] PSM NO. 043  
 FIRM OR AGENCY: WILSONMILLER INC. LB NO. \_\_\_\_\_  
 15438 N. FLORIDA AVE, MAGDALENE CTR. SUITE #200  
 ADDRESS: TAMPA, FLORIDA 33613  
 CITY: TAMPA STATE: FLORIDA ZIP: 33613  
 PHONE NUMBER: (813) 963-0389 DATE: 01/25/2008

SEND ORIGINAL TO:  
 Department of Environmental Protection  
 Bureau of Surveying and Mapping  
 3900 Commonwealth Boulevard  
 Mail Station 105  
 Tallahassee, Florida 32399

Processed: 2-23-08 MSB D.E.P. USE ONLY  
 B.L.M. - I.D. 500300  
 QUAD - I.D. 2216 FOR NYC IS NW

EMBOSSED SEAL OVER SIGNATURE