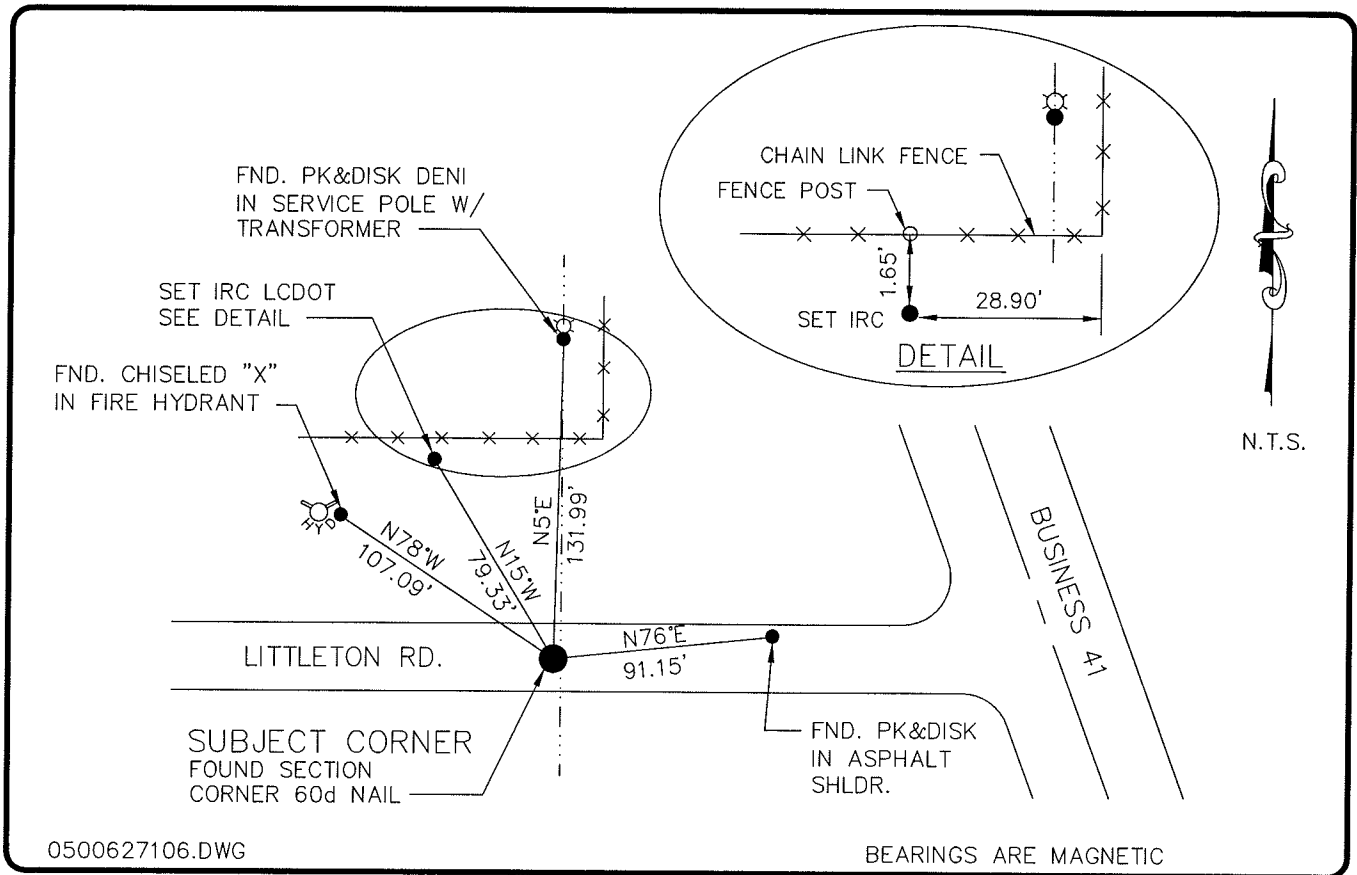


LAND CORNER RECORD

**PUBLIC WORKS
LEE COUNTY, FLORIDA**

Address - 1500 Monroe St., Ft. Myers, Fla. 33901

Phone : (239) 479-8900



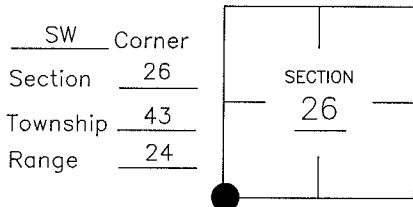
0500627106.DWG

BEARINGS ARE MAGNETIC

COMMENTS:

CORNER DESCRIPTION

FOUND 60d SPIKE, HAS BEEN USED LOCALLY AS ACCEPTED SECTION CORNER.



HORIZONTAL POSITION INFORMATION

Florida West Zone, NAD 1983(1990 Adjustment)
 Northing(ft) 858976.01 Easting(ft) 691649.89
 Latitude 26°41'48.502141" Longitude 81°53'28.746935"
 Scale Factor 0.99994262

EXISTING CERTIFIED CORNER RECORDS

Document No.	Date
<u>15269</u>	<u>10-1-82</u>
<u>65337</u>	<u>2-19-99</u>

I hereby certify the monument and accessories shown above were field located on 4-20-05.

Arthur W. Parsons, County Surveyor
 Professional Surveyor and Mapper
 Florida Certificate No. 2987
 Date Signed 1-17-06

The above documents are based on FDEP Bureau of Surveying and Mapping Record Information.

Lee County Department of Transportation
 1500 Monroe Street
 Fort Myers, Florida 33901
 Phone: (239) 479-8900

POINT NO. 245

BLM REFERENCE NO. T43SR24E500200