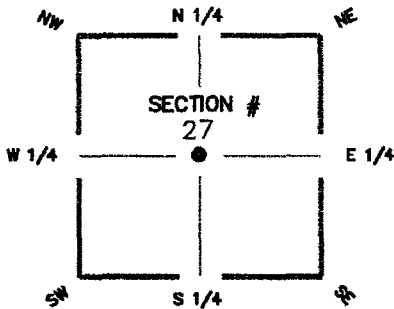


FLORIDA DEPARTMENT OF ENVIRONMENTAL PROTECTION CERTIFIED CORNER RECORD

DOC. # 093420

CORNER DESCRIPTION: MONUMENTATION DESCRIPTION (EVIDENCE FOUND OR METHOD TO SET)



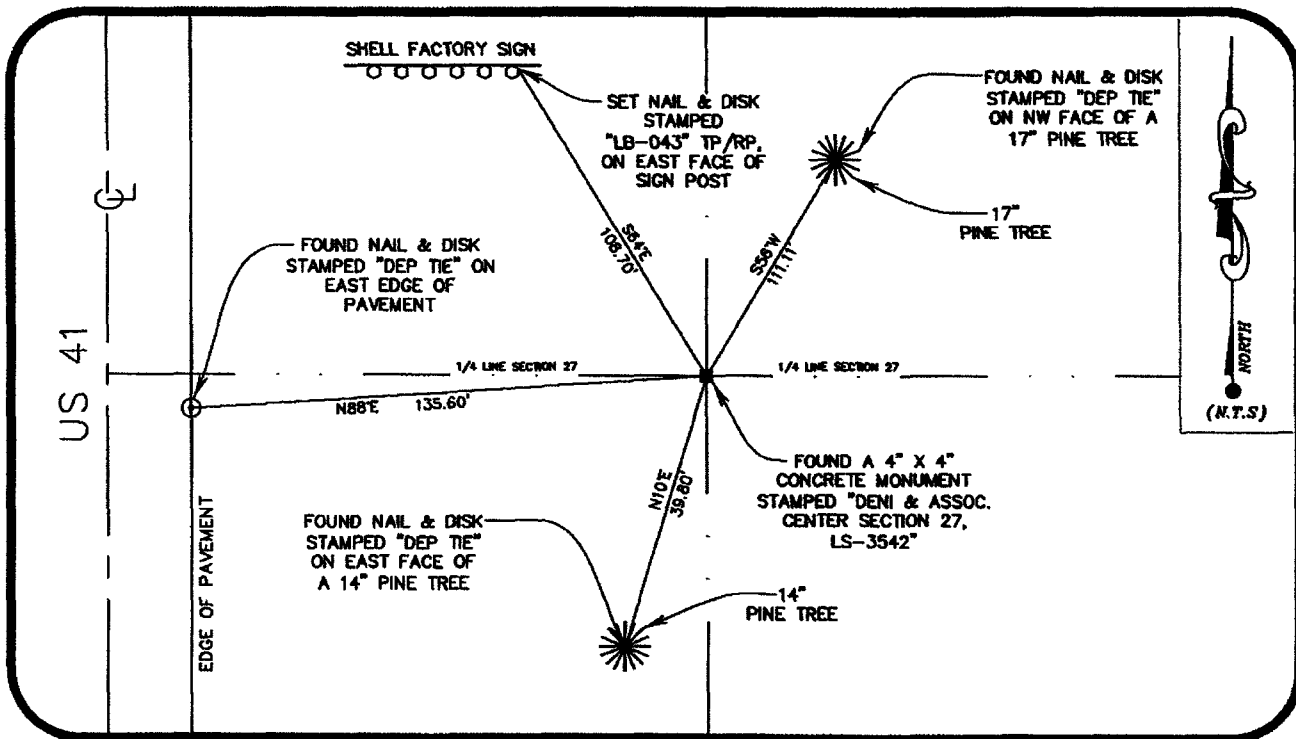
FOUND 4" X 4" CONCRETE MONUMENT WITH AN ALUMINUM DISK STAMPED "DENI & ASSOC., CENTER SECTION 27", LS-3542. RECORD FILED TO SHOW NEW REFERENCES TO SECTION CORNER ON CERTIFIED CORNER RECORD, DOCUMENT #69545.

HORIZONTAL POSITION INFORMATION

Latitude _____ Longitude _____
 Y(NORTHING-Ft.) 861636.250 X(EASTING-Ft.) 688971.252 Zone FL-W
 Convergence _____ Scale factor _____

CENTER corner of Section 27
 Twp 43 S., Rge 24 E.
 Tallahassee Base Meridian,
LEE County(s), Florida

Coordinate determination (circle one): Field traverse (GPS)
 Horizontal datum (circle one): NAD27 NAD83(1986) (NAD83(1990)) other (explain) _____
 Accuracy (circle one): 1st 2nd (3rd) other _____



SURVEYORS CERTIFICATE:

I certify the monument and accessories indicated above were field located on 05/15/2007

Patricia Day L.S. 5588
 SIGNATURE PSM NO. 043
 WILSONMILLER INC.

SEND ORIGINAL TO:
 Department of Environmental Protection
 Bureau of Surveying and Mapping
 3900 Commonwealth Boulevard
 Mail Station 105
 Tallahassee, Florida 32399

15438 N. FLORIDA AVE MAGDALENE CTR. SUITE #200
 ADDRESS
 TAMPA FLORIDA 33613
 CITY STATE ZIP
 (813) 963-0389 01/25/2008
 PHONE NUMBER DATE

Processed:	D.E.P. USE ONLY <u>2-23-08 m3</u>
B.L.M. - I.D.	<u>440240</u>
QUAD - I.D.	<u>2216 Fort Myers NW</u>

EMBOSSSED SEAL OVER SIGNATURE