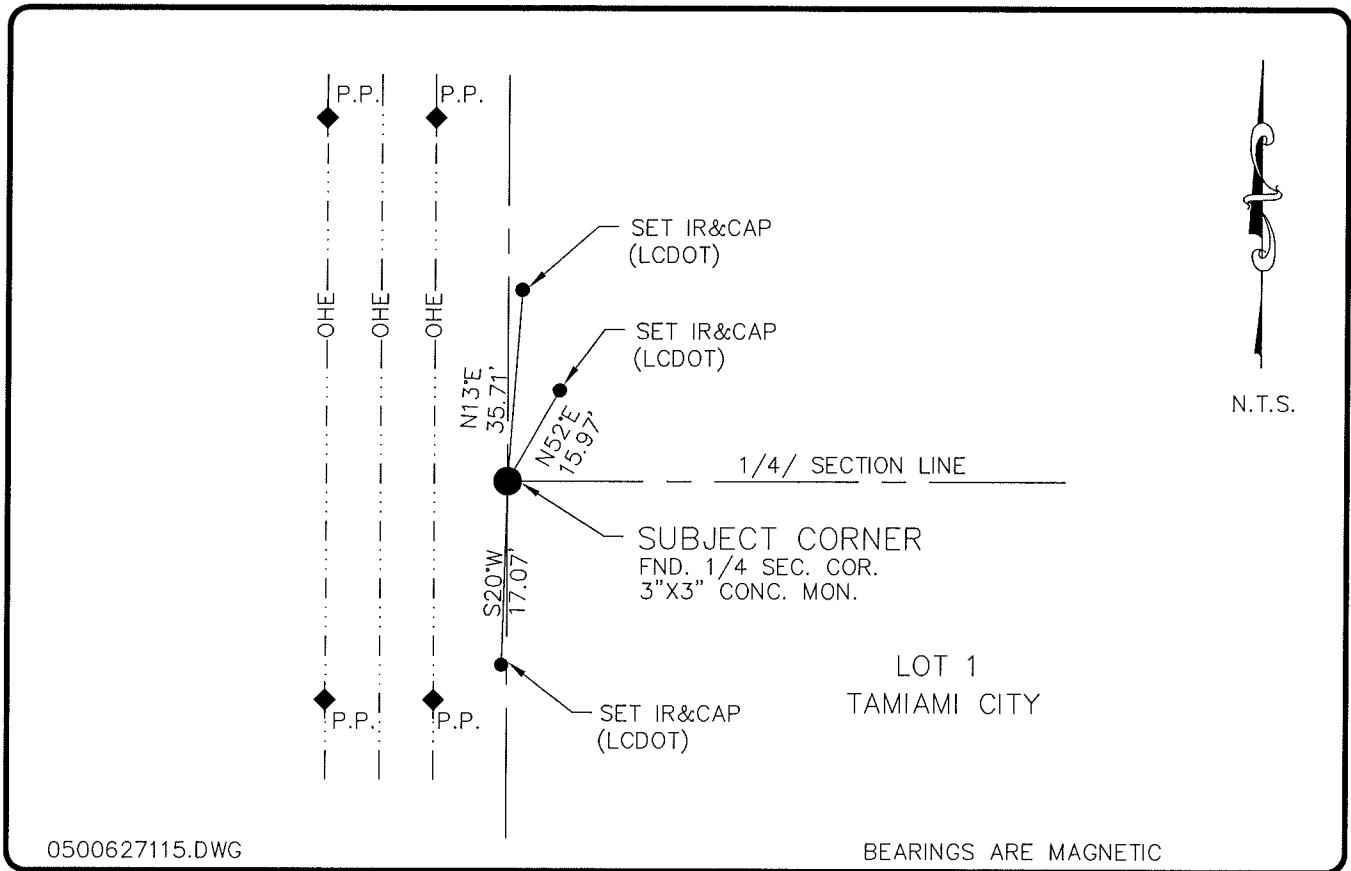


LAND CORNER RECORD

**PUBLIC WORKS
LEE COUNTY, FLORIDA**

Address – 1500 Monroe St., Ft. Myers, Fla. 33901

Phone : (239) 479-8900



0500627115.DWG

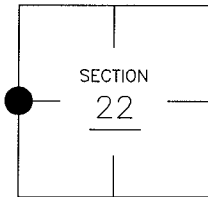
BEARINGS ARE MAGNETIC

COMMENTS:

QUARTER CORNER IS SAME AS NORTHWEST CORNER OF LOT 28, BLOCK 1, TAMIAMI CITY, PLAT BOOK 9, PAGE 6. ACCEPTED AS LOCALLY USED CORNER.

CORNER DESCRIPTION

W1/4 Corner
Section 22
Township 43
Range 24



HORIZONTAL POSITION INFORMATION


Florida West Zone, NAD 1983(1990 Adjustment)
Northing(ft) 866892.84 Easting(ft) 686283.71
Latitude 26°43'06.951765" Longitude 81°54'27.833467"
Scale Factor 0.99994221

EXISTING CERTIFIED CORNER RECORDS

Document No.	Date
NONE FOUND	

The above documents are based on FDEP Bureau of Surveying and Mapping Record Information.

I hereby certify the monument and accessories shown above were field located on 9-23-04.


Arthur W. Parsons, County Surveyor
Professional Surveyor and Mapper
Florida Certificate No. 2987
Date Signed 1-17-08

Lee County Department of Transportation
1500 Monroe Street
Fort Myers, Florida 33901
Phone: (239) 479-8900

POINT NO. 264

BLM REFERENCE NO. T43SR24E400340