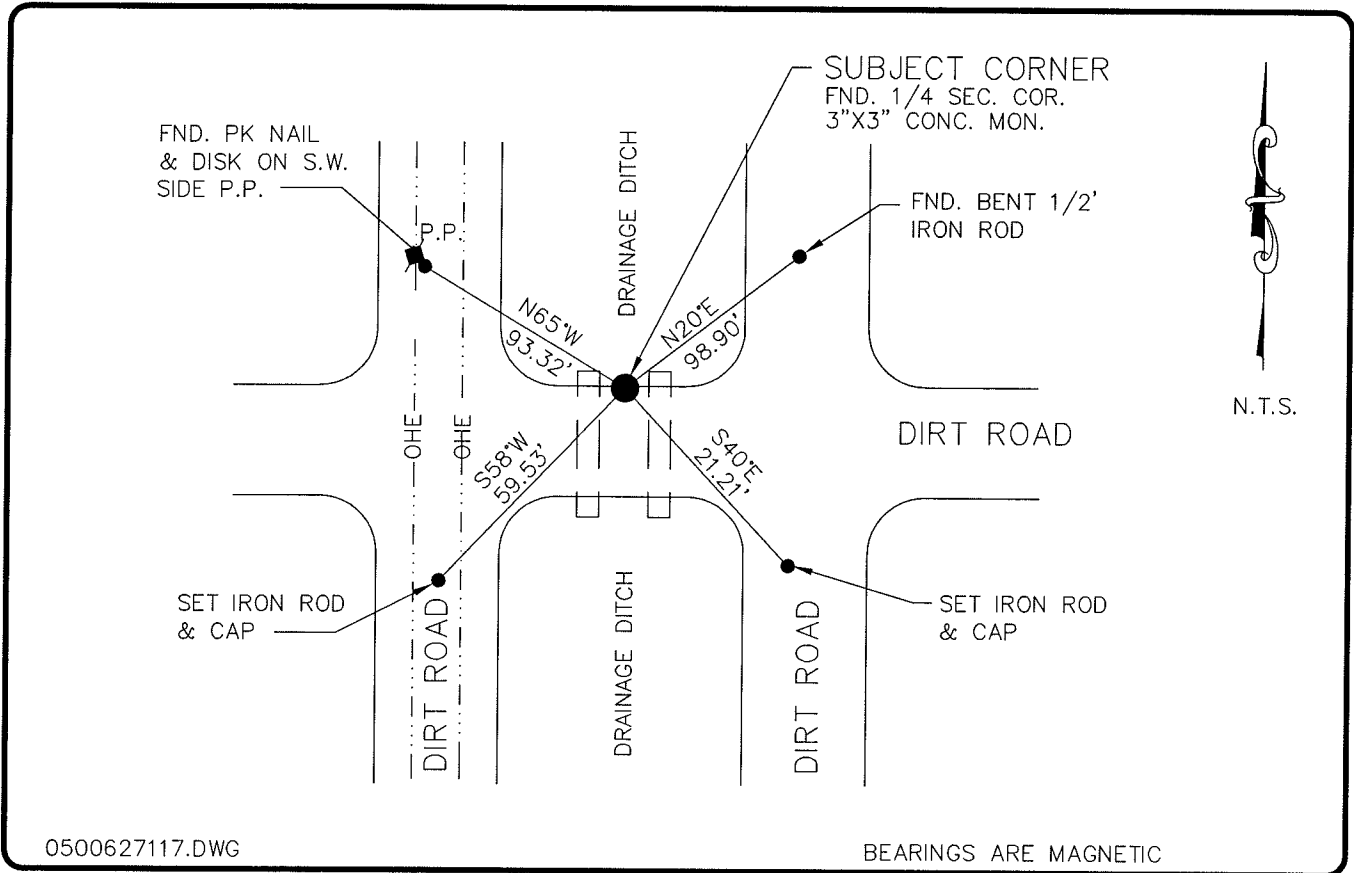


LAND CORNER RECORD

**PUBLIC WORKS
LEE COUNTY, FLORIDA**

Address - 1500 Monroe St., Ft. Myers, Fla. 33901

Phone : (239) 479-8900



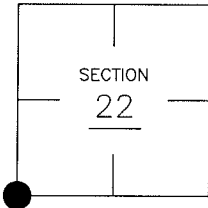
0500627117.DWG

BEARINGS ARE MAGNETIC

COMMENTS:

CORNER DESCRIPTION

SW Corner
Section 22
Township 43
Range 24



HORIZONTAL POSITION INFORMATION

Florida West Zone, NAD 1983(1990 Adjustment)
 Northing(ft) 864302.16 Easting(ft) 686284.98
 Latitude 26°42'41.293861" Longitude 81°54'27.860143"
 Scale Factor 0.99994221

EXISTING CERTIFIED CORNER RECORDS

Document No.	Date
<u>35018</u>	<u>4-13-90</u>
<u>65330</u>	<u>6-29-99</u>

The above documents are based on FDEP Bureau of Surveying and Mapping Record Information.

I hereby certify the monument and accessories shown above were field located on 5-18-05.

(Signature)
Arthur W. Parsons, County Surveyor
 Professional Surveyor and Mapper
 Florida Certificate No. 2987
 Date Signed 1-17-06

Lee County Department of Transportation
 1500 Monroe Street
 Fort Myers, Florida 33901
 Phone: (239) 479-8900

POINT NO. 280

BLM REFERENCE NO. T43SR24E400300