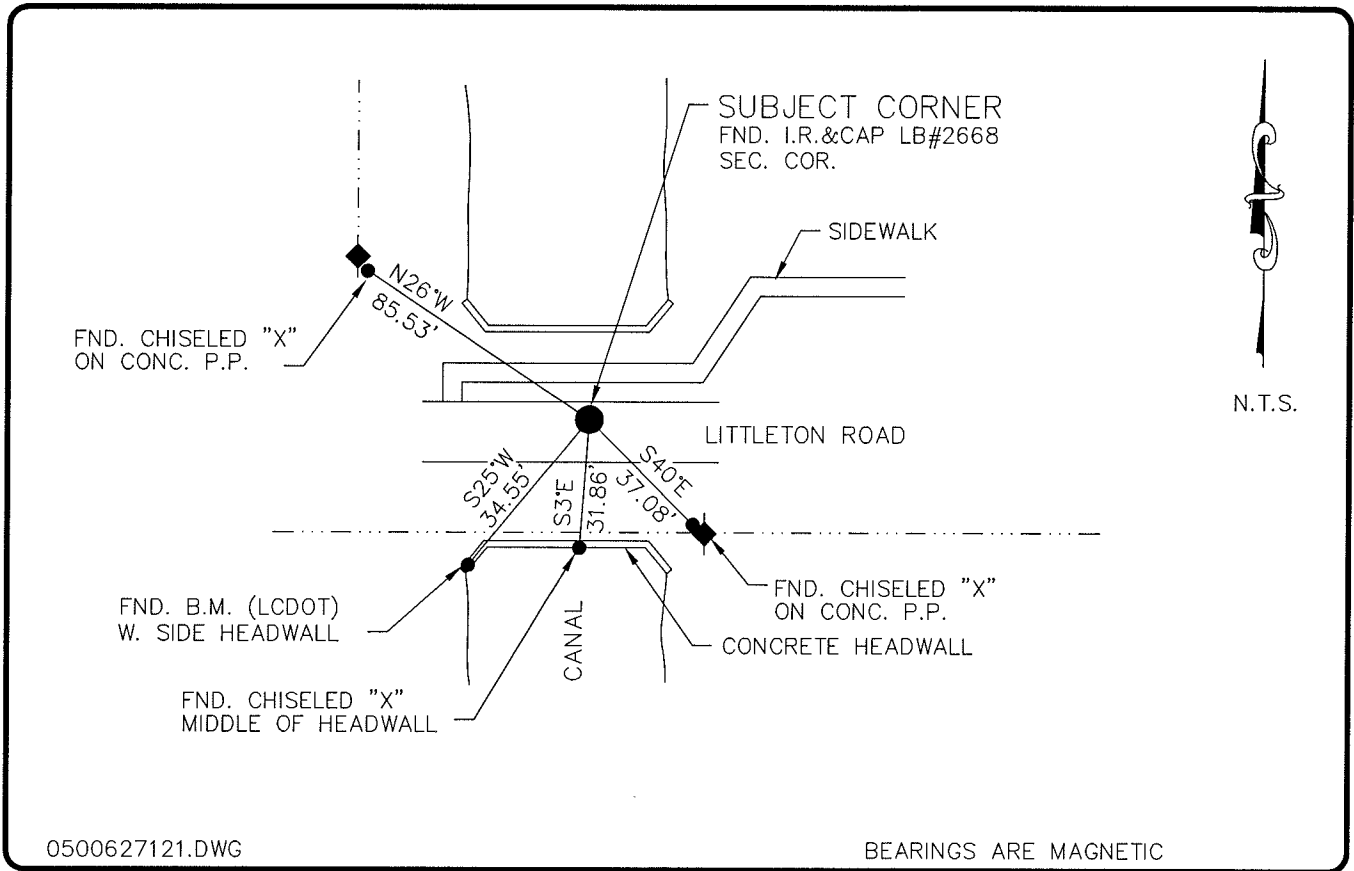


**LAND CORNER RECORD**

**PUBLIC WORKS  
LEE COUNTY, FLORIDA**

Address - 1500 Monroe St., Ft. Myers, Fla. 33901

Phone : (239) 479-8900



0500627121.DWG

BEARINGS ARE MAGNETIC

**COMMENTS:**

LOCALLY ACCEPTED CORNER USED BY LOCAL SURVEYORS.

**CORNER DESCRIPTION**

W1/4 Corner	
Section	27
Township	43
Range	24

**HORIZONTAL POSITION INFORMATION**

Florida West Zone, NAD 1983(1990 Adjustment)  
 Northing(ft) 858984.32      Easting(ft) 686314.69  
 Latitude 26°41'48.626088"      Longitude 81°54'27.574978"  
 Scale Factor 0.99994221

**EXISTING CERTIFIED CORNER RECORDS**

Document No.	Date
<u>26250</u>	<u>9-27-99</u>
<u>65335</u>	<u>9-27-99</u>

The above documents are based on FDEP Bureau of Surveying and Mapping Record Information.

I hereby certify the monument and accessories shown above were field located on 4-20-05.

**Arthur W. Parsons, County Surveyor**  
 Professional Surveyor and Mapper  
 Florida Certificate No. 2987  
 Date Signed 1-17-06

Lee County Department of Transportation  
 1500 Monroe Street  
 Fort Myers, Florida 33901  
 Phone: (239) 479-8900

POINT NO. 247

BLM REFERENCE NO. T43SR24E400200