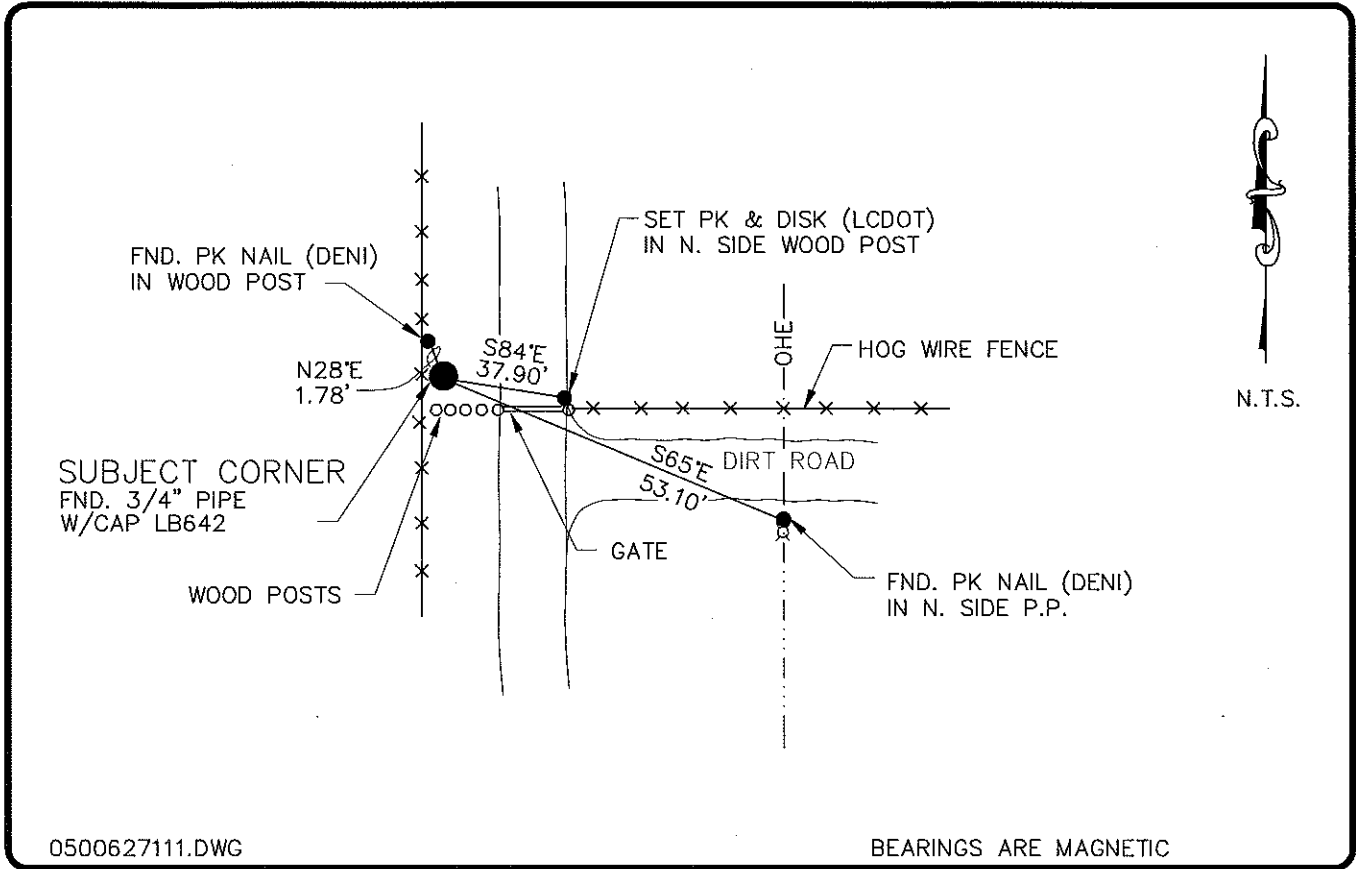


LAND CORNER RECORD

PUBLIC WORKS
LEE COUNTY, FLORIDA

Address - 1500 Monroe St., Ft. Myers, Fla. 33901

Phone : (239) 479-8900



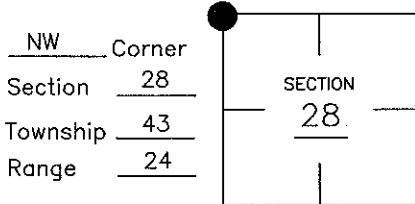
0500627111.DWG

BEARINGS ARE MAGNETIC

COMMENTS:

CORNER DESCRIPTION

LOCALLY ACCEPTED CORNER. VERIFIED WITH PREVIOUS C.C.R. RECORDS.



HORIZONTAL POSITION INFORMATION

Florida West Zone, NAD 1983(1990 Adjustment)
 Northing(ft) 864236.74 Easting(ft) 680672.54
 Latitude 26°42'40.682430" Longitude 81°55'29.753595"
 Scale Factor 0.99994186

EXISTING CERTIFIED CORNER RECORDS

Document No.	Date
<u>17822</u>	<u>10-1-82</u>
<u>35017</u>	<u>4-11-89</u>
<u>71595</u>	<u>10-25-90</u>
_____	_____
_____	_____

I hereby certify the monument and accessories shown above were field located on 5-25-05.

 Arthur W. Parsons, County Surveyor
 Professional Surveyor and Mapper
 Florida Certificate No. 2987
 Date Signed _____

Lee County Department of Transportation
 1500 Monroe Street
 Fort Myers, Florida 33901
 Phone: (239) 479-8900

The above documents are based on FDEP Bureau of Surveying and Mapping Record Information.

POINT NO. 310

BLM REFERENCE NO. T43SR24E300300