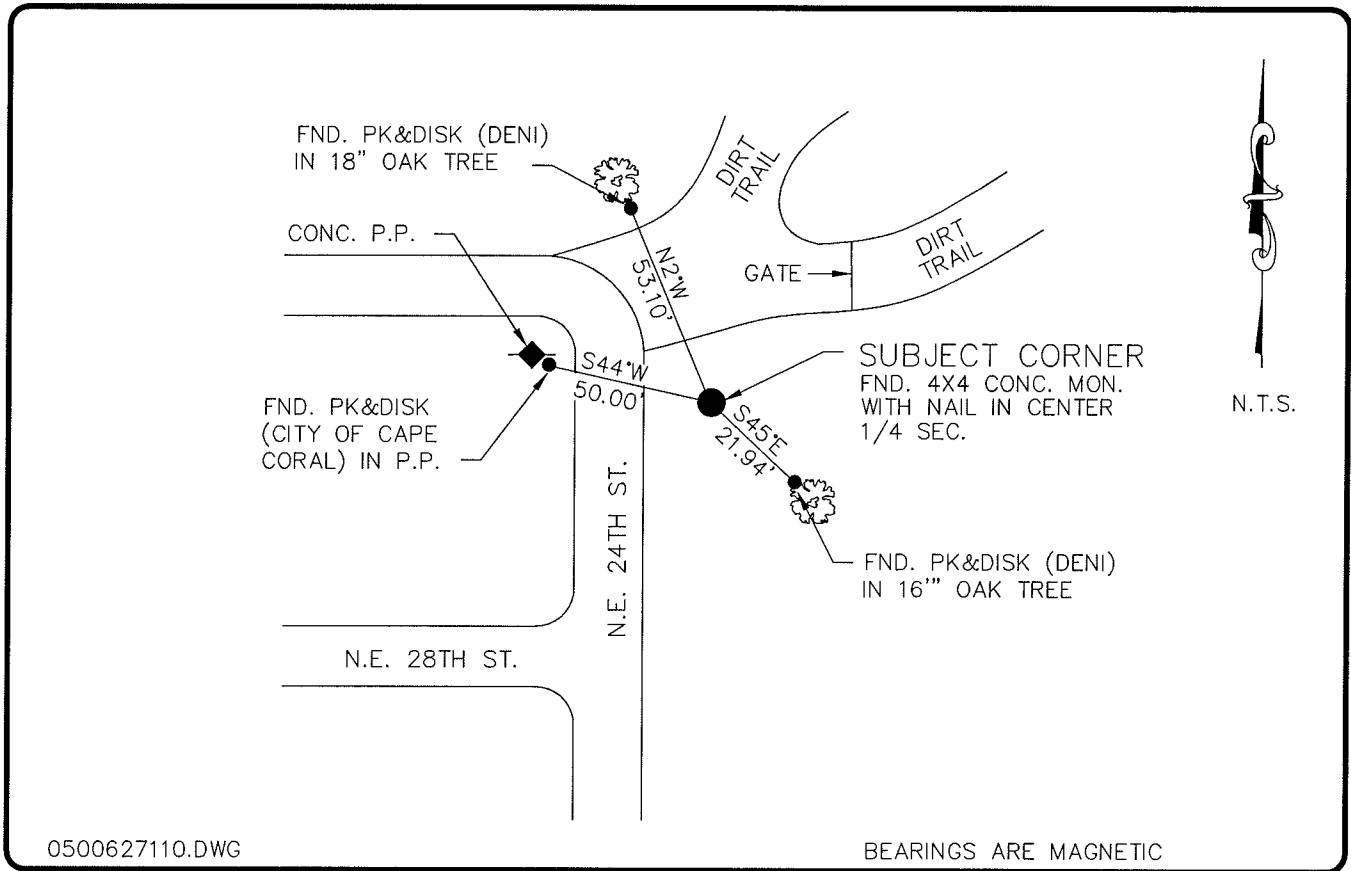


**LAND CORNER RECORD**

**PUBLIC WORKS  
LEE COUNTY, FLORIDA**

Address - 1500 Monroe St., Ft. Myers, Fla. 33901

Phone : (239) 479-8900



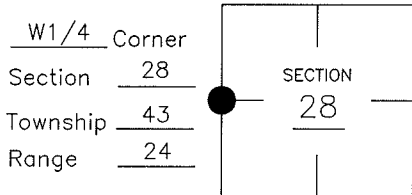
0500627110.DWG

BEARINGS ARE MAGNETIC

**COMMENTS:**

**CORNER DESCRIPTION**

LOCALLY ACCEPTED CORNER. VERIFIED BY C.C.R. RECORDS.



**HORIZONTAL POSITION INFORMATION**

Florida West Zone, NAD 1983(1990 Adjustment)  
 Northing(ft) 861615.63      Easting(ft) 680678.52  
 Latitude 26°42'14.723084"      Longitude 81°55'29.704673"  
 Scale Factor 0.99994186

**EXISTING CERTIFIED CORNER RECORDS**

Document No.	Date
<u>17821</u>	<u>12-13-83</u>
<u>35015</u>	<u>4-13-90</u>
<u>71597</u>	<u>4-6-01</u>

The above documents are based on FDEP Bureau of Surveying and Mapping Record Information.

I hereby certify the monument and accessories shown above were field located on 5-25-05.

Arthur W. Parsons, County Surveyor  
 Professional Surveyor and Mapper  
 Florida Certificate No. 2987  
 Date Signed 1-17-06

Lee County Department of Transportation  
 1500 Monroe Street  
 Fort Myers, Florida 33901  
 Phone: (239) 479-8900

POINT NO. 309

BLM REFERENCE NO. T43SR24E300240