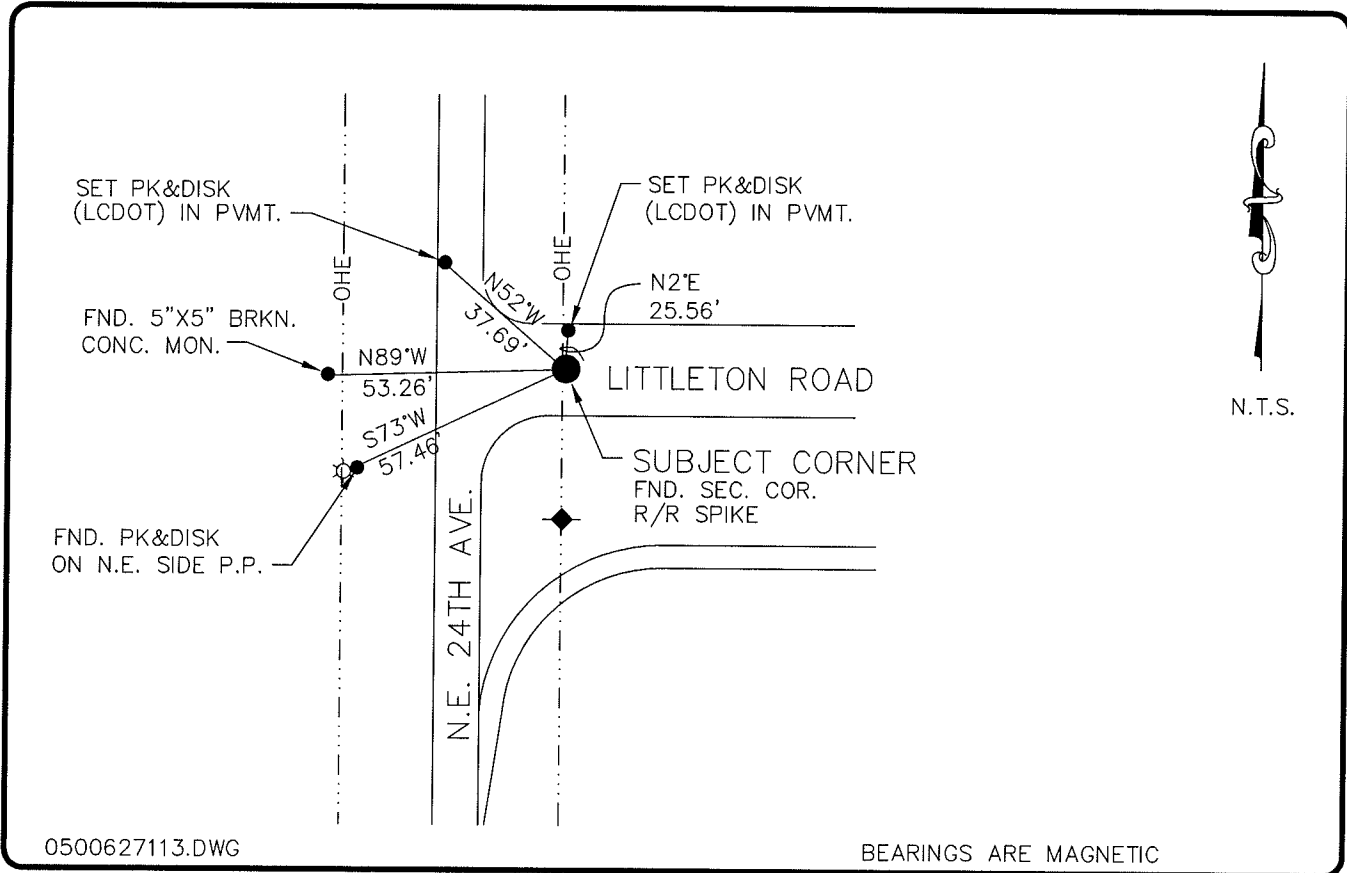


**LAND CORNER RECORD**

**PUBLIC WORKS  
LEE COUNTY, FLORIDA**

Address - 1500 Monroe St., Ft. Myers, Fla. 33901

Phone : (239) 479-8900



0500627113.DWG

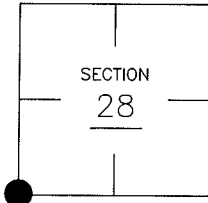
BEARINGS ARE MAGNETIC

**COMMENTS:**

**CORNER DESCRIPTION**

LOCALLY ACCEPTED CORNER. VERIFIED POSITION WITH C.C.R. RECORDS.

SW Corner  
 Section 28  
 Township 43  
 Range 24



**HORIZONTAL POSITION INFORMATION**

Florida West Zone, NAD 1983(1990 Adjustment)  
 Northing(ft) 858971.36 Easting(ft) 680685.23  
 Latitude 26°41'48.534333" Longitude 81°55'29.647853"  
 Scale Factor 0.99994186

**EXISTING CERTIFIED CORNER RECORDS**

Document No.	Date
<u>72757</u>	<u>7-12-01</u>

I hereby certify the monument and accessories shown above were field located on 5-18-05

Arthur W. Parsons, County Surveyor  
 Professional Surveyor and Mapper  
 Florida Certificate No. 2987  
 Date Signed 1-17-06

The above documents are based on FDEP Bureau of Surveying and Mapping Record Information.

Lee County Department of Transportation  
 1500 Monroe Street  
 Fort Myers, Florida 33901  
 Phone: (239) 479-8900

POINT NO. 283

BLM REFERENCE NO. T43SR24E300200