

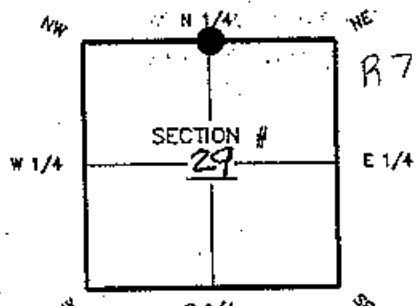
FLORIDA DEPARTMENT OF ENVIRONMENTAL PROTECTION CERTIFIED CORNER RECORD

DOC. # 072756

CORNER DESCRIPTION: MONUMENTATION DESCRIPTION (EVIDENCE FOUND OR METHOD TO SET)

Depict corner with ●

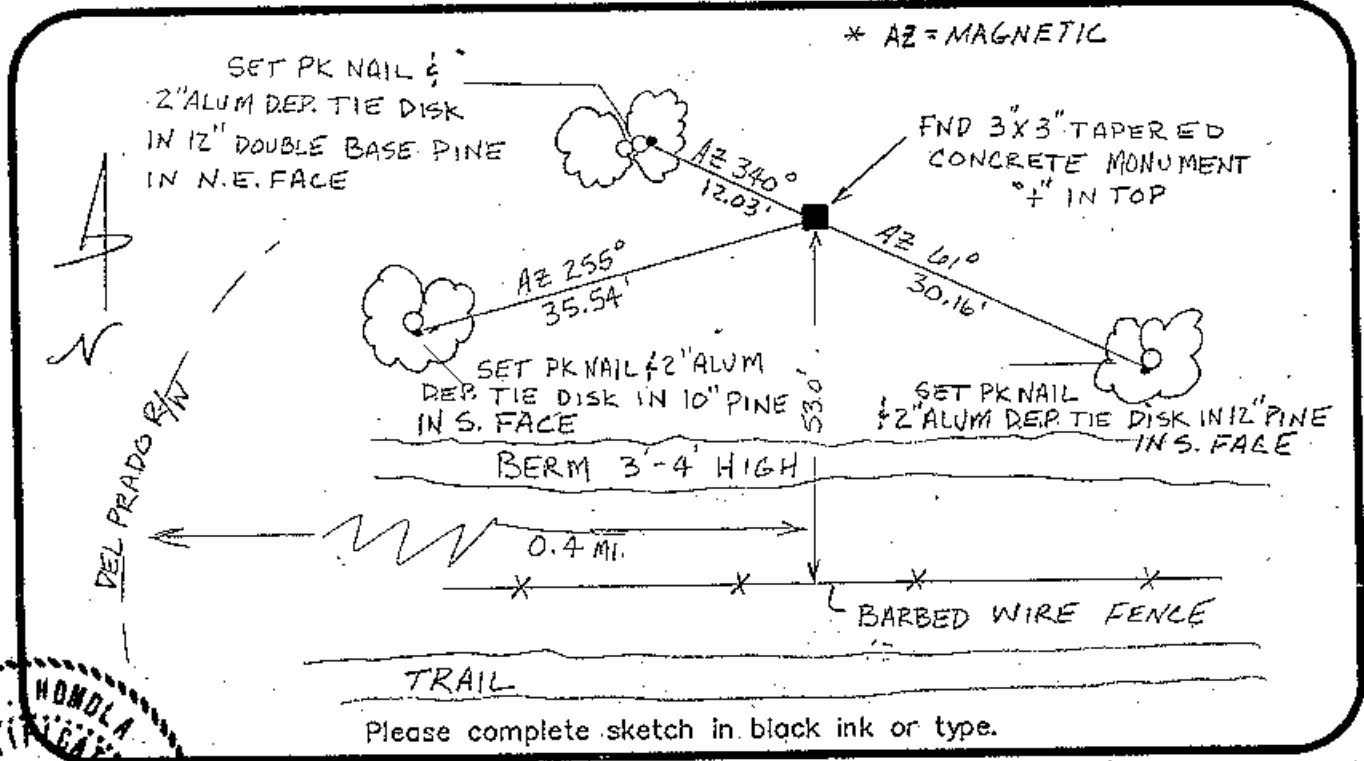
FOUND 3" X 3" CONCRETE MONUMENT (TAPERED)
W/ PIUS (+) ON TOP



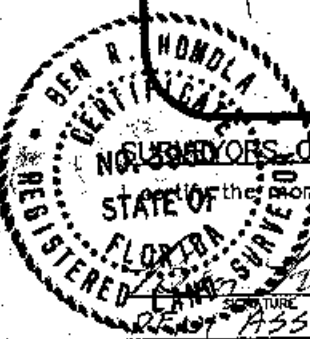
N 1/4 corner of Section 29
Twp 43 South, Rge 24 East
Tallahassee Base Meridian,
LEE County(s), Florida

HORIZONTAL POSITION AND HEIGHT INFORMATION (if determined):

Latitude 26° 42' 40.44848" N Longitude 81° 55' 55.06467" W
Y(NORTHING-FL.) 864211.830 X(EASTING-FL.) 678377.350 Zone WEST
Convergence 0°-01'-50" Scale factor 0.99994174
Coordinate determination (circle one): Field traverse (GPS)
Horizontal datum (circle one): NAD27 NAD83(1986) (NAD83(1990)) other (explain)
Accuracy (circle one): 1st 2nd 3rd other 1:50,000



Please complete sketch in black ink or type.



SUBSCRIBER'S CERTIFICATE:

I, the undersigned, certify that the monument and accessories indicated above were field located on JULY 12, 2001

Ben R. Homola 3950
REGISTERED PROFESSIONAL SURVEYOR PSH NO.
ASSOCIATES, INC. 3542
FIRM OR AGENCY LB NO.
624 ARL WAY
FORT MYERS ADDRESS FL 33912
(941) 275-8875 CITY 7-26-01 STATE DP
PHONE NUMBER DATE

EMBOSSSED SEAL OVER SIGNATURE

SEND ORIGINAL TO:
Department of Environmental Protection
Bureau of Surveying and Mapping
3900 Commonwealth Boulevard
Mail Station 105
Tallahassee, Florida 32399

Processed:	D.E.P. USE ONLY <u>8-2-01</u>	<u>CS</u>
B.L.M. - I.D.	<u>240300</u>	
QUAD - I.D.	<u>437 Fort Myers NW</u>	