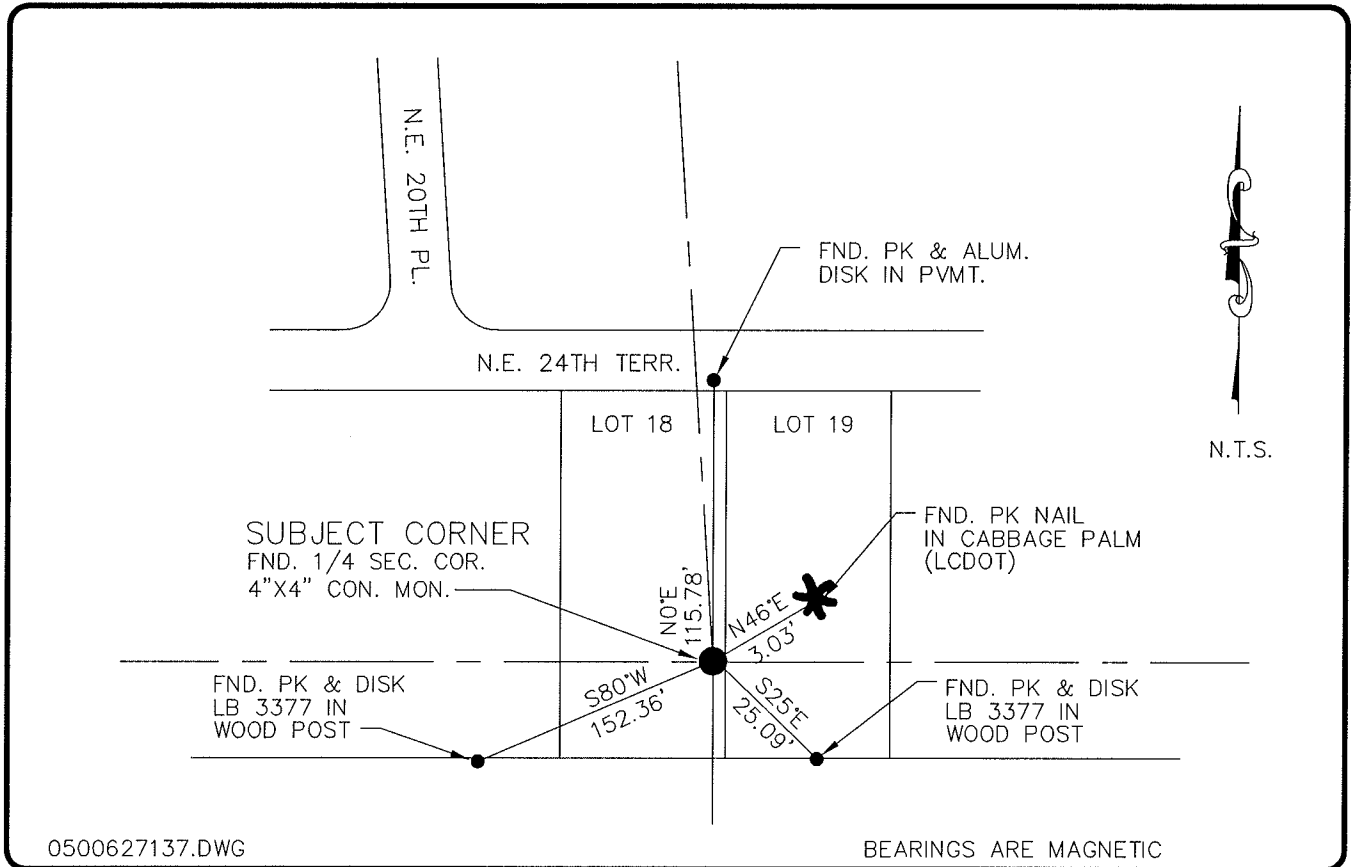


**LAND CORNER RECORD**

**PUBLIC WORKS  
LEE COUNTY, FLORIDA**

Address - 1500 Monroe St., Ft. Myers, Fla. 33901

Phone : (239) 479-8900



0500627137.DWG

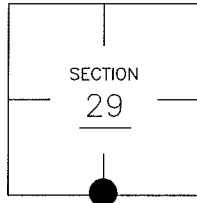
BEARINGS ARE MAGNETIC

**COMMENTS:**

**CORNER DESCRIPTION**

VERIFIED CORNER LOCATION WITH C.C.R. TIES.  
C.C.R. #72758.

S1/4 Corner  
Section 29  
Township 43  
Range 24



**HORIZONTAL POSITION INFORMATION**

Florida West Zone, NAD 1983(1990 Adjustment)  
 Northing(ft) 858970.65 Easting(ft) 678196.12  
 Latitude 26°41'48.541082" Longitude 81°55'57.093830"  
 Scale Factor 0.99994173

**EXISTING CERTIFIED CORNER RECORDS**

Document No.	Date
<u>72578</u>	<u>7-12-2001</u>

I hereby certify the monument and accessories shown above were field located on 5-19-05.

*(Signature)*  
**Arthur W. Parsons, County Surveyor**  
 Professional Surveyor and Mapper  
 Florida Certificate No. 2987  
 Date Signed 1-17-06

The above documents are based on FDEP Bureau of Surveying and Mapping Record Information.

Lee County Department of Transportation  
 1500 Monroe Street  
 Fort Myers, Florida 33901  
 Phone: (239) 479-8900

POINT NO. 289

BLM REFERENCE NO. T43SR24E240200