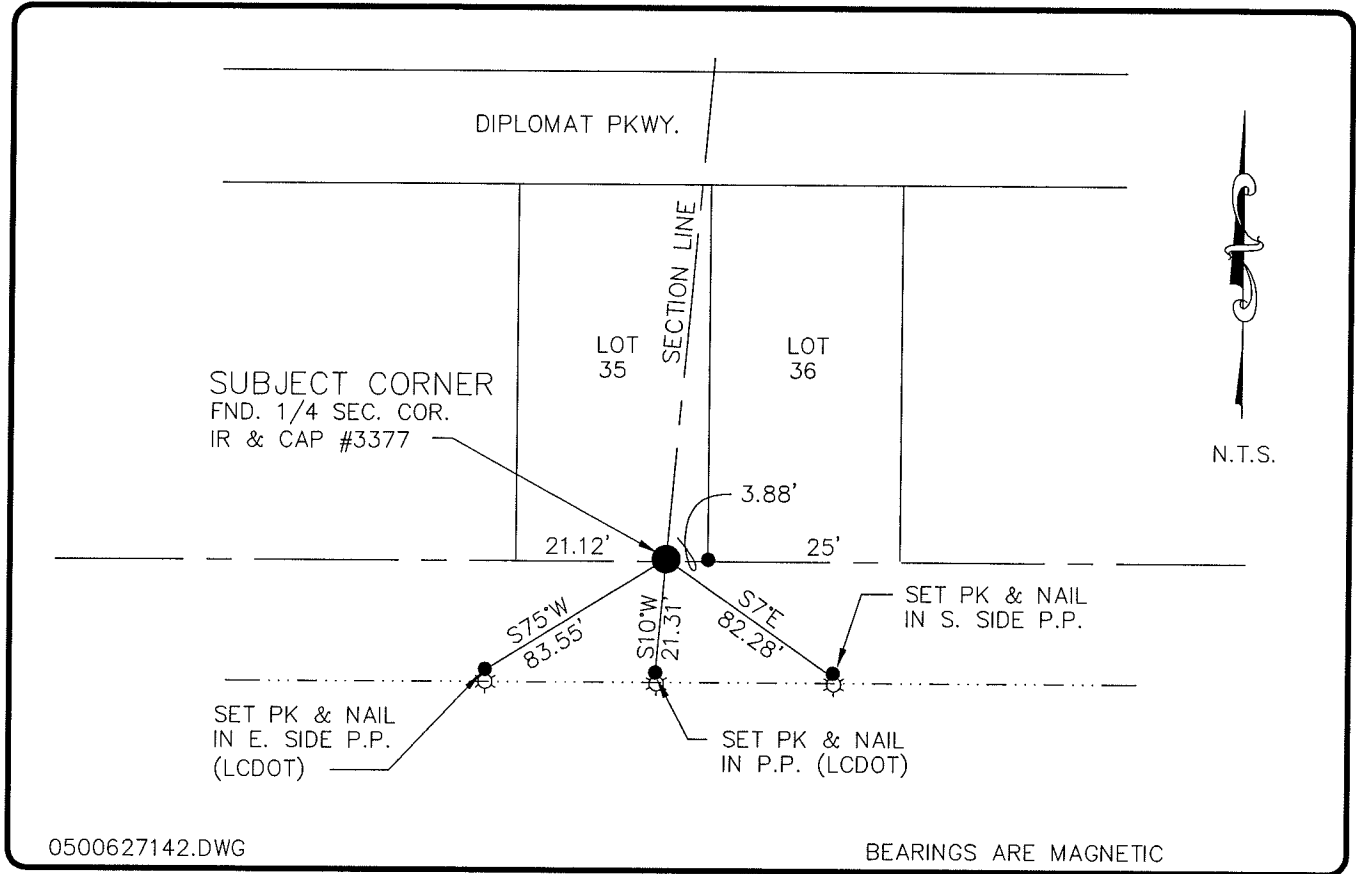


LAND CORNER RECORD

**PUBLIC WORKS
LEE COUNTY, FLORIDA**

Address — 1500 Monroe St., Ft. Myers, Fla. 33901

Phone : (239) 479-8900



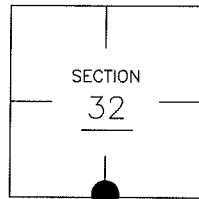
0500627142.DWG

BEARINGS ARE MAGNETIC

COMMENTS:

CORNER DESCRIPTION

S1/4 Corner
Section 32
Township 43
Range 24



HORIZONTAL POSITION INFORMATION

Florida West Zone, NAD 1983(1990 Adjustment)
 Northing(ft) 853650.25 Easting(ft) 678023.20
 Latitude 26°40'55.849027" Longitude 81°55'59.031302"
 Scale Factor 0.99994172

EXISTING CERTIFIED CORNER RECORDS

Document No.	Date
<u>37075</u>	<u>10-25-90</u>

The above documents are based on FDEP Bureau of Surveying and Mapping Record Information.

I hereby certify the monument and accessories shown above were field located on 8-15-05.

(Signature)
Arthur W. Parsons, County Surveyor
 Professional Surveyor and Mapper
 Florida Certificate No. 2987
 Date Signed 1-17-06

Lee County Department of Transportation
 1500 Monroe Street
 Fort Myers, Florida 33901
 Phone: (239) 479-8900

POINT NO. 343

BLM REFERENCE NO. T43SR24E240100