


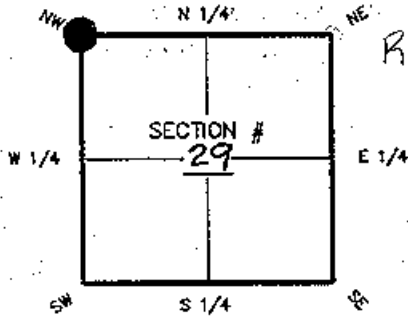
**FLORIDA DEPARTMENT OF ENVIRONMENTAL PROTECTION  
CERTIFIED CORNER RECORD**

DOC. # 072755

DOC. #

**CORNER DESCRIPTION:**

Depict corner with  



NW corner of Section 29  
Twp 43 South, Rge 24 East  
Tallahassee Base Meridian,  
LEE County(s), Florida

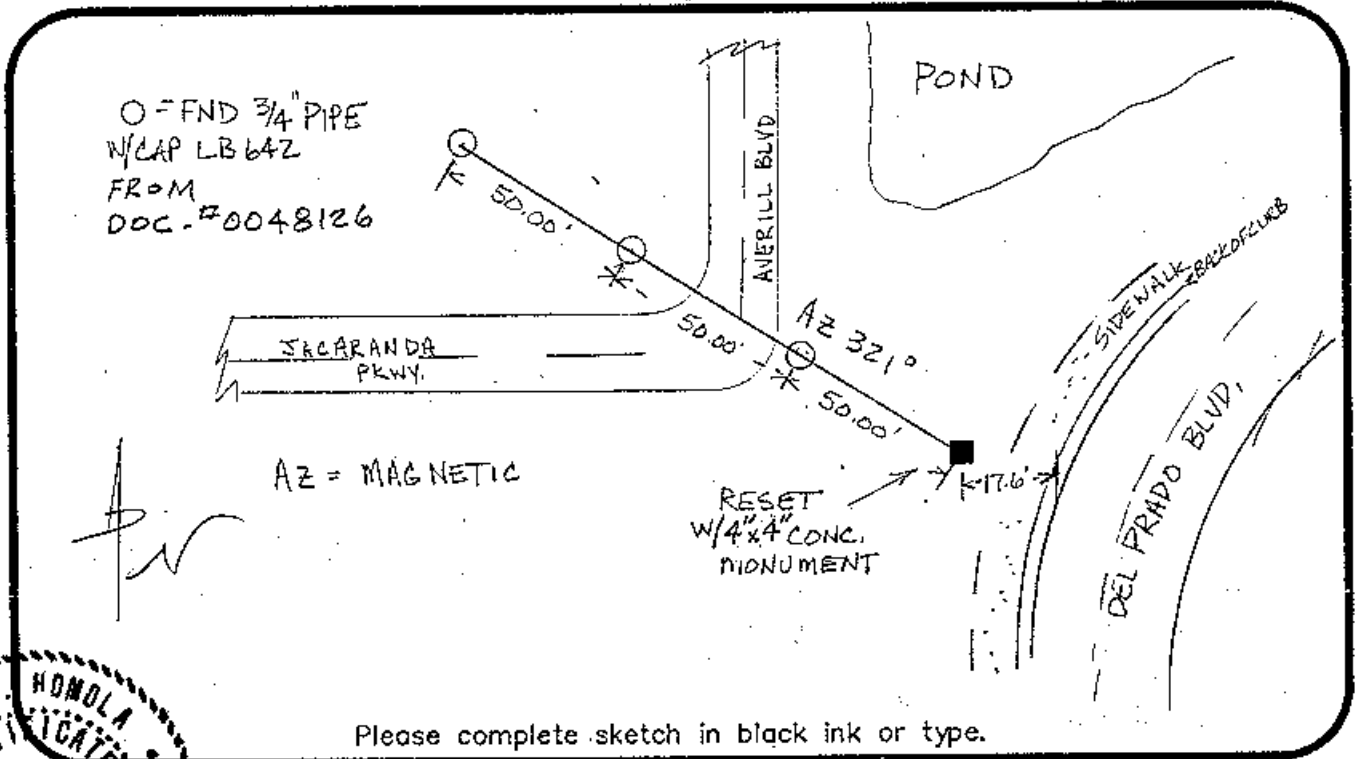
**MONUMENTATION DESCRIPTION (EVIDENCE FOUND OR METHOD TO SET)**

FOUND ~~CM - DESTROYED.~~

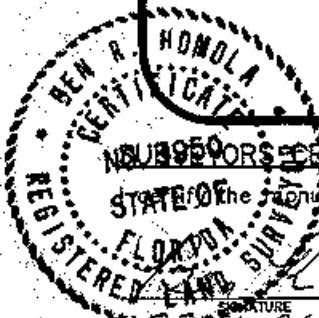
RS  
RESET W/ 4x4 CONCRETE MONUMENT W/  
2" ALUM CAP: DENI ASSOC. LS 3950 AS  
PER RECOVERY SHEET DOC# 0048126

**HORIZONTAL POSITION AND HEIGHT INFORMATION (if determined):**

Latitude 26° 42' - 40.97546" N Longitude 81° 56' - 24.61417" W  
Y(NORTHING--Ft.) 864263.695 X(EASTING--Ft.) 675697.782 Zone WEST  
Convergence 0° 01' - 37" Scale factor .99994161  
Coordinate determination (circle one): Field traverse GPS  
Horizontal datum (circle one): NAD27 NAD83(1986) NAD83(1990) other (explain)  
Accuracy (circle one): 1st 2nd 3rd other 1:50,000



Please complete sketch in black ink or type.



**SUBSCRIBER'S CERTIFICATE:**

The monument and accessories indicated above were field located on JULY 12, 2001

SEND ORIGINAL TO:  
Department of Environmental Protection  
Bureau of Surveying and Mapping  
3900 Commonwealth Boulevard  
Mail Station 105  
Tallahassee, Florida 32399

Ben A. Homola 3950  
DENI ASSOCIATES, INC. PSM NO. 3542  
6241 ARC WAY LB NO.  
FORT MYERS ADDRESS FL 33912  
(941) 275-8875 CITY STATE ZIP  
DATE 7-26-01

D.E.P. USE ONLY  
Processed: 8-2-01 CS  
B.L.M. - I.D. 200300  
QUAD - I.D. 437 Fort Myers NW

EMBOSSSED SEAL OVER SIGNATURE