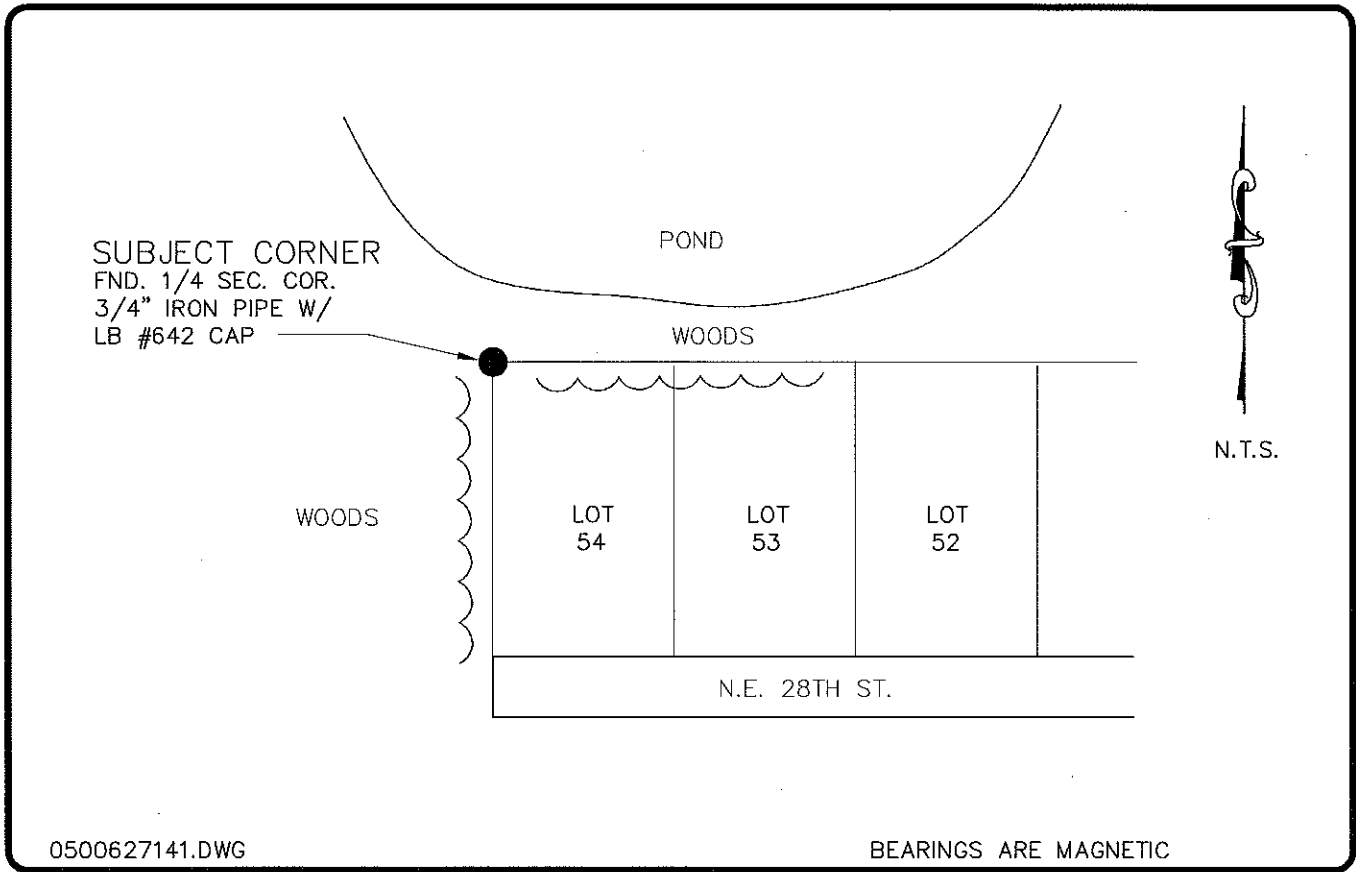


LAND CORNER RECORD

PUBLIC WORKS
LEE COUNTY, FLORIDA

Address - 1500 Monroe St., Ft. Myers, Fla. 33901

Phone : (239) 479-8900



0500627141.DWG

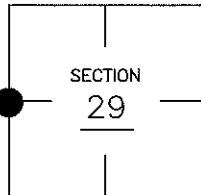
BEARINGS ARE MAGNETIC

COMMENTS:

FOUND 3/4" IRON PIPE WITH CAP LB #642, JOHNSON ENGINEERING AT THE NORTHWEST CORNER OF LOT 54, BLOCK 2265, P.B. 16, PAGE 59, CAPE CORAL. PLAT SHOWS NW CORNER OF LOT AS WEST 1/4 CORNER.

CORNER DESCRIPTION

W1/4 Corner
Section 29
Township 43
Range 24



HORIZONTAL POSITION INFORMATION

Florida West Zone, NAD 1983(1990 Adjustment)

Northing(ft) 861602.29 Easting(ft) 675691.99

Latitude 26°42'14.617091" Longitude 81°56'24.691815"

Scale Factor 0.99994161

EXISTING CERTIFIED CORNER RECORDS

Document No.	Date
<u>48128</u>	<u>2-21-94</u>
_____	_____
_____	_____
_____	_____

The above documents are based on FDEP Bureau of Surveying and Mapping Record Information.

I hereby certify the monument and accessories shown above were field located on 8-16-05.

Arthur W. Parsons, County Surveyor
Professional Surveyor and Mapper
Florida Certificate No. 2987
Date Signed _____

Lee County Department of Transportation
1500 Monroe Street
Fort Myers, Florida 33901
Phone: (239) 479-8900

POINT NO. 342

BLM REFERENCE NO. T43SR24E200240