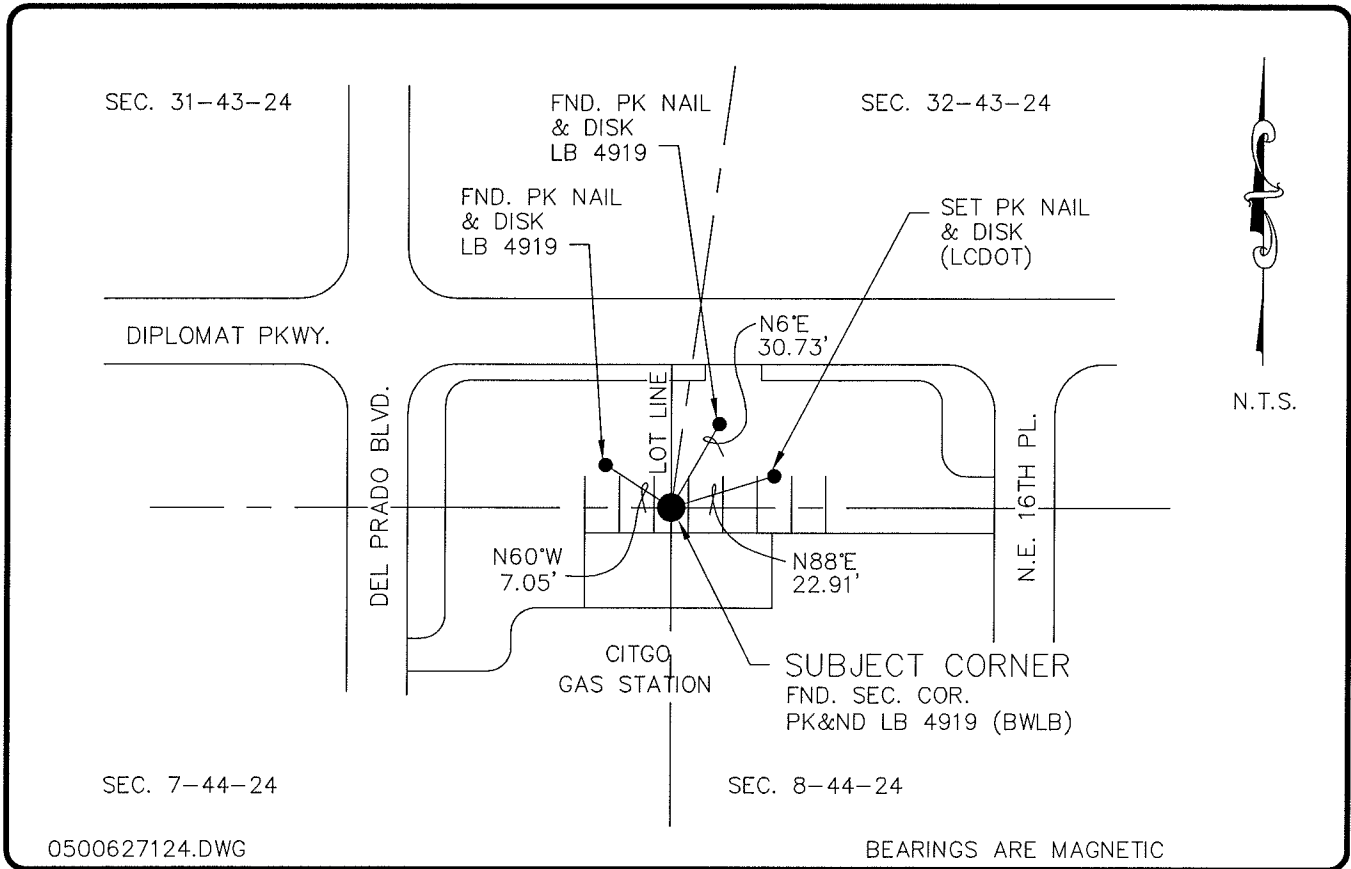


**LAND CORNER RECORD**

**PUBLIC WORKS  
LEE COUNTY, FLORIDA**

Address - 1500 Monroe St., Ft. Myers, Fla. 33901

Phone : (239) 479-8900



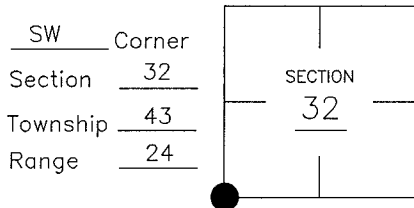
0500627124.DWG

BEARINGS ARE MAGNETIC

**COMMENTS:**

**CORNER DESCRIPTION**

SECTION CORNER IS THE SOUTHWEST CORNER OF LOT 39, BLOCK 2093, UNIT 33. CAPE CORAL PLAT BOOK 16, PAGE 41.



**HORIZONTAL POSITION INFORMATION**

Florida West Zone, NAD 1983(1990 Adjustment)  
 Northing(ft) 853636.66 Easting(ft) 675382.01  
 Latitude 26°40'55.727226" Longitude 81°56'28.150528"  
 Scale Factor 0.99994159

**EXISTING CERTIFIED CORNER RECORDS**

Document No.	Date
<u>37074</u>	<u>10-25-90</u>
_____	_____
_____	_____
_____	_____
_____	_____

The above documents are based on FDEP Bureau of Surveying and Mapping Record Information.

I hereby certify the monument and accessories shown above were field located on 10-5-04.

*(Signature)*  
**Arthur W. Parsons, County Surveyor**  
 Professional Surveyor and Mapper  
 Florida Certificate No. 2987  
 Date Signed 1-17-06

Lee County Department of Transportation  
 1500 Monroe Street  
 Fort Myers, Florida 33901  
 Phone: (239) 479-8900

POINT NO. 328

BLM REFERENCE NO. T43SR24E200100