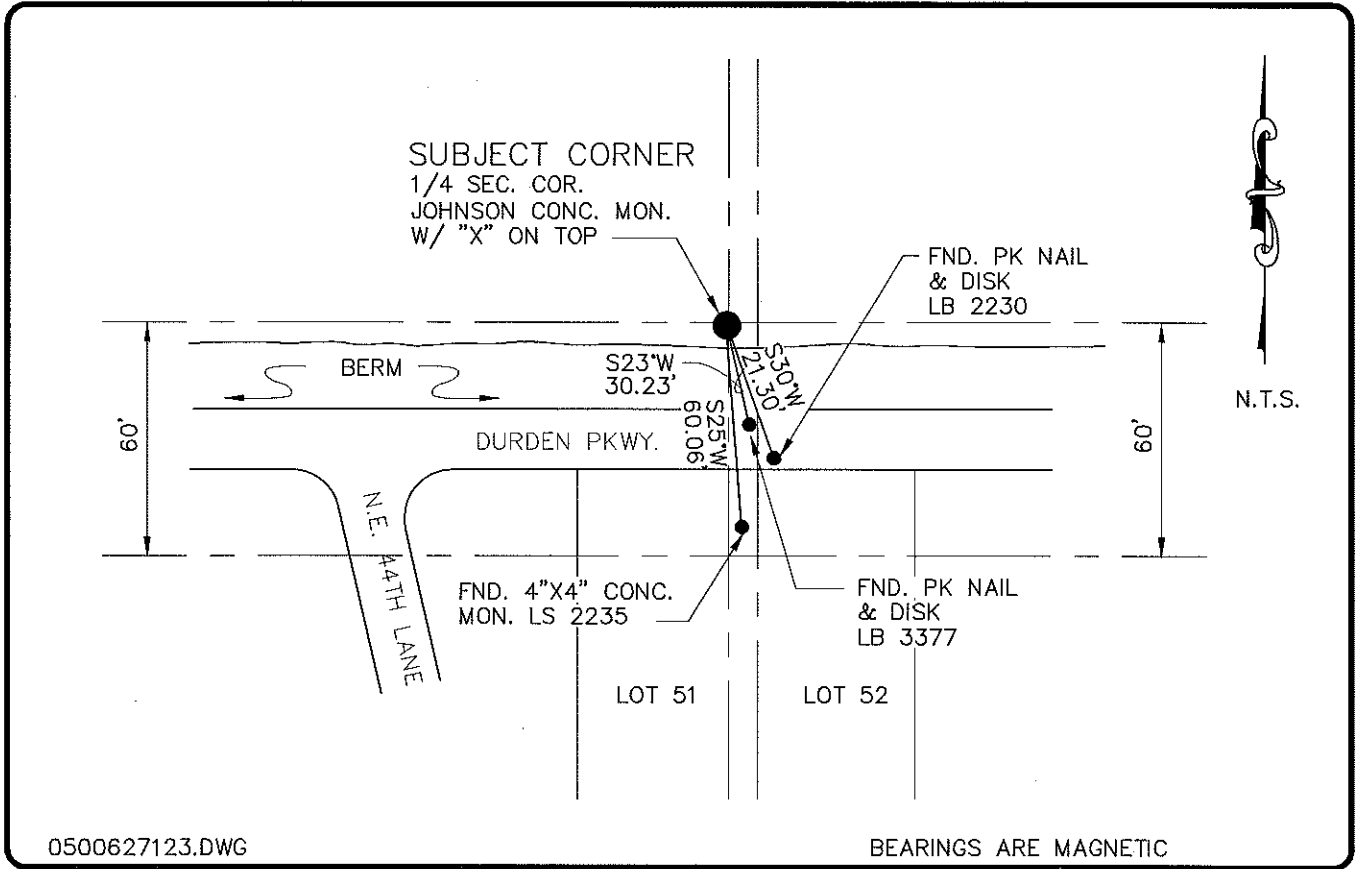


LAND CORNER RECORD

PUBLIC WORKS
LEE COUNTY, FLORIDA

Address - 1500 Monroe St., Ft. Myers, Fla. 33901

Phone : (239) 479-8900



0500627123.DWG

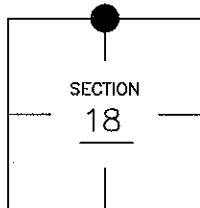
BEARINGS ARE MAGNETIC

COMMENTS:

CONCRETE MONUMENT FOUND AT QUARTER CORNER FITS SUBDIVISION CONTROL IN PLAT BOOK 24, PAGE 86.

CORNER DESCRIPTION

N1/4 Corner
Section 18
Township 43
Range 24



HORIZONTAL POSITION INFORMATION

Florida West Zone, NAD 1983(1990 Adjustment)

Northing(ft) 875078.23 Easting(ft) 672967.38

Latitude 26°44'28.093518" Longitude 81°56'54.676382"

Scale Factor 0.99994150

EXISTING CERTIFIED CORNER RECORDS

Document No.	Date
NONE FOUND	

The above documents are based on FDEP Bureau of Surveying and Mapping Record Information.

I hereby certify the monument and accessories shown above were field located on 6-21-05.

Arthur W. Parsons, County Surveyor
Professional Surveyor and Mapper
Florida Certificate No. 2987
Date Signed _____

Lee County Department of Transportation
1500 Monroe Street
Fort Myers, Florida 33901
Phone: (239) 479-8900

POINT NO. 322

BLM REFERENCE NO. T43SR24E200500 ¹⁴⁰