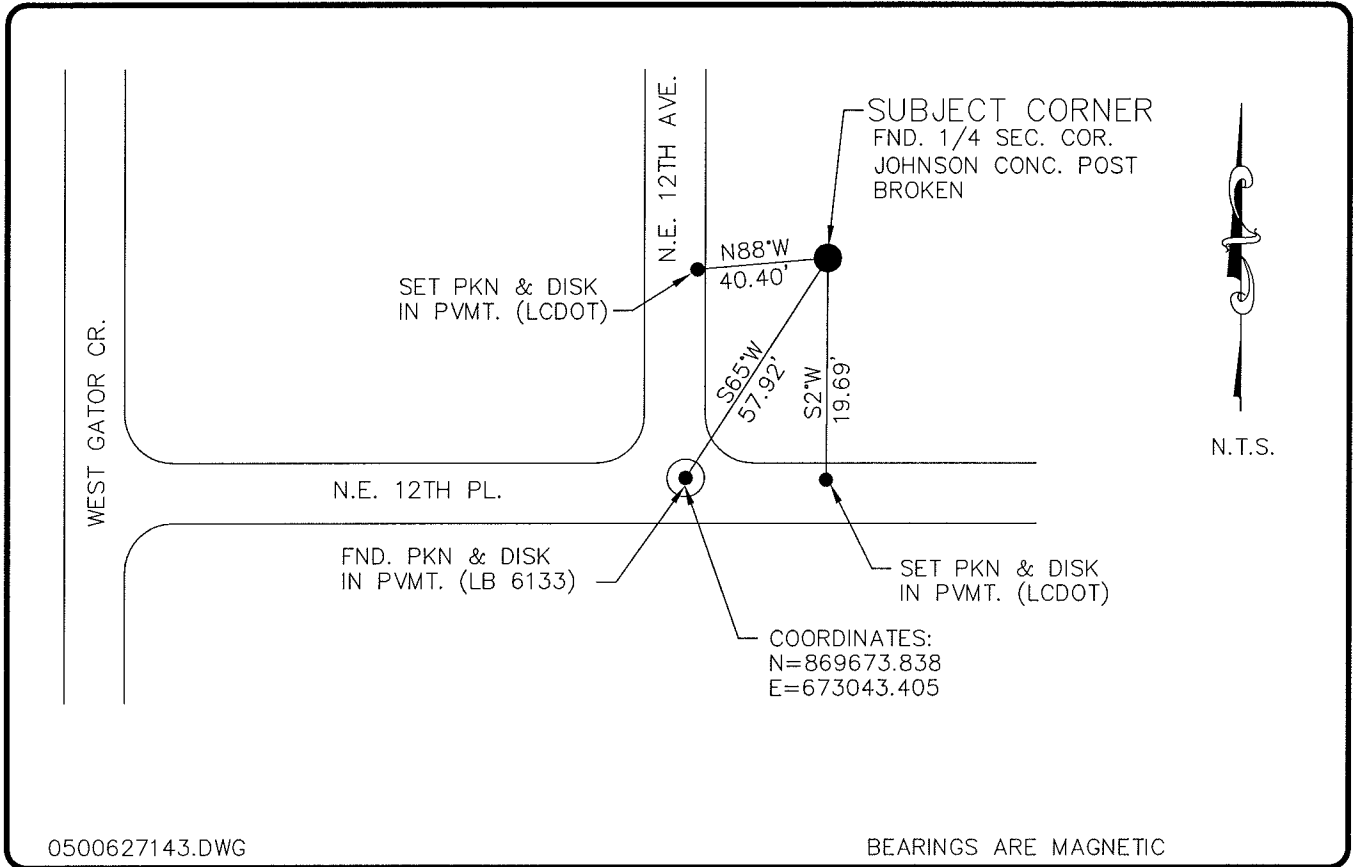


LAND CORNER RECORD

**PUBLIC WORKS
LEE COUNTY, FLORIDA**

Address - 1500 Monroe St., Ft. Myers, Fla. 33901

Phone : (239) 479-8900



0500627143.DWG

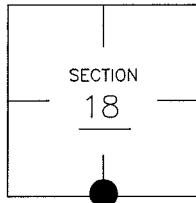
BEARINGS ARE MAGNETIC

COMMENTS:

NOTE: UNABLE TO CONFIRM LOCATION OF QUARTER SECTION CORNER. P.I. INTERSECTION COORDINATES MAY BE UTILIZED FOR G.I.S. PURPOSES.

CORNER DESCRIPTION

S1/4 Corner
Section 18
Township 43
Range 24



HORIZONTAL POSITION INFORMATION

Florida West Zone, NAD 1983(1990 Adjustment)
Northing(ft) 869701.77 Easting(ft) 673094.15
Latitude 26°43'34.845054" Longitude 81°56'53.302169"
Scale Factor 0.99994150

EXISTING CERTIFIED CORNER RECORDS

Document No.	Date
NONE FOUND	

The above documents are based on FDEP Bureau of Surveying and Mapping Record Information.

I hereby certify the monument and accessories shown above were field located on 8-8-05.

Arthur W. Parsons, County Surveyor
Professional Surveyor and Mapper
Florida Certificate No. 2987
Date Signed 1-17-06

Lee County Department of Transportation
1500 Monroe Street
Fort Myers, Florida 33901
Phone: (239) 479-8900

POINT NO. 337

BLM REFERENCE NO. T43SR24E140400