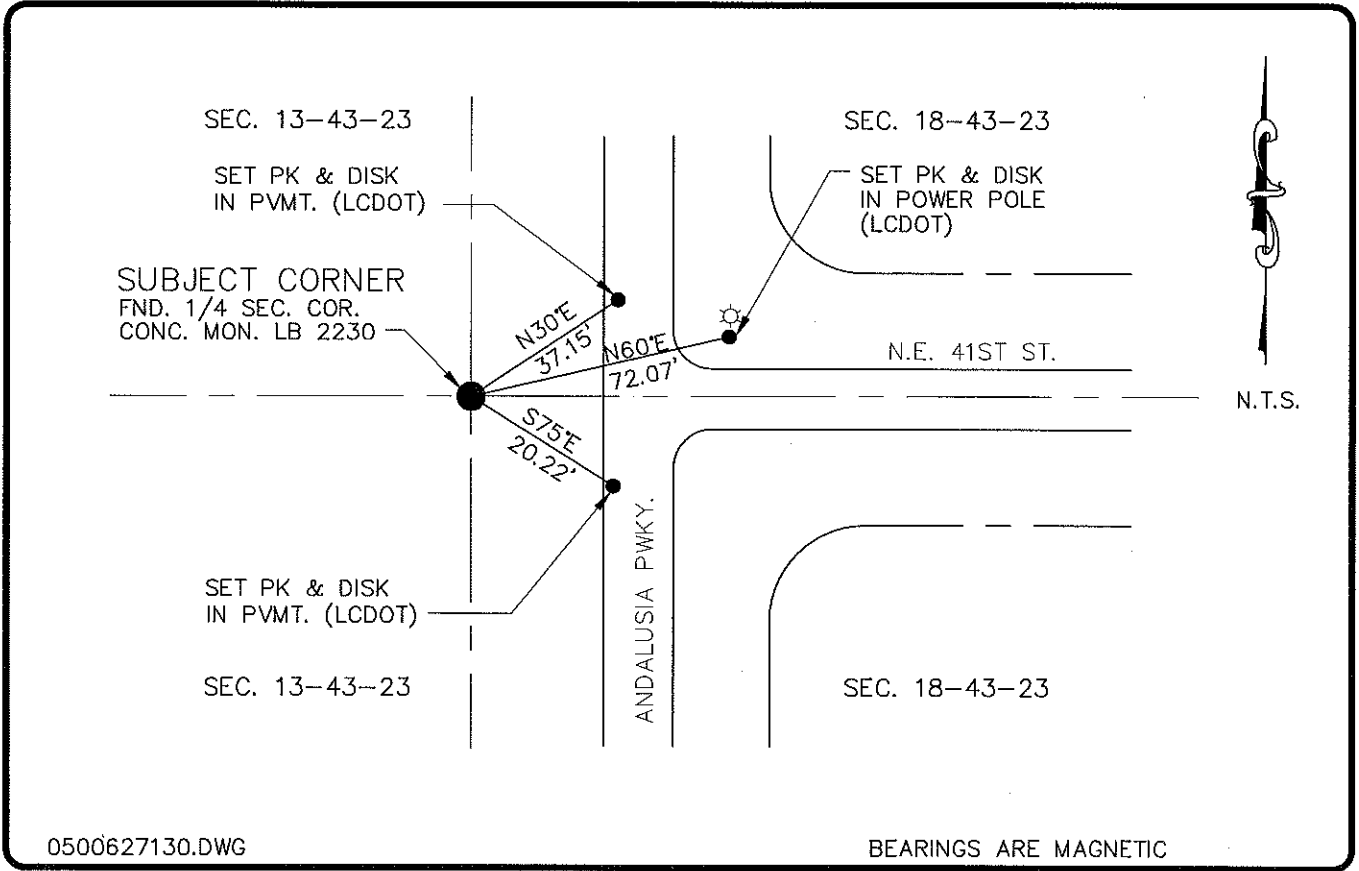


LAND CORNER RECORD

PUBLIC WORKS
LEE COUNTY, FLORIDA

Address - 1500 Monroe St., Ft. Myers, Fla. 33901

Phone : (239) 479-8900

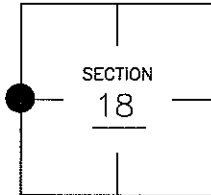


COMMENTS:

CORNER DESCRIPTION

CONCRETE MONUMENT FOUND WAS CONFIRMED BY C.C.R. #65306.

W1/4 Corner
Section 18
Township 43
Range 24



HORIZONTAL POSITION INFORMATION

Florida West Zone, NAD 1983(1990 Adjustment)
 Northing(ft) 872393.26 Easting(ft) 670165.25
 Latitude 26°44'01.515121" Longitude 81°57'25.595802"
 Scale Factor 0.99994140

EXISTING CERTIFIED CORNER RECORDS

Document No.	Date
65306	7-22-99

The above documents are based on FDEP Bureau of Surveying and Mapping Record Information.

I hereby certify the monument and accessories shown above were field located on 5-26-05.

Arthur W. Parsons, County Surveyor
 Professional Surveyor and Mapper
 Florida Certificate No. 2987
 Date Signed _____

Lee County Department of Transportation
 1500 Monroe Street
 Fort Myers, Florida 33901
 Phone: (239) 479-8900

POINT NO. 313

BLM REFERENCE NO. T43SR24E100400

440