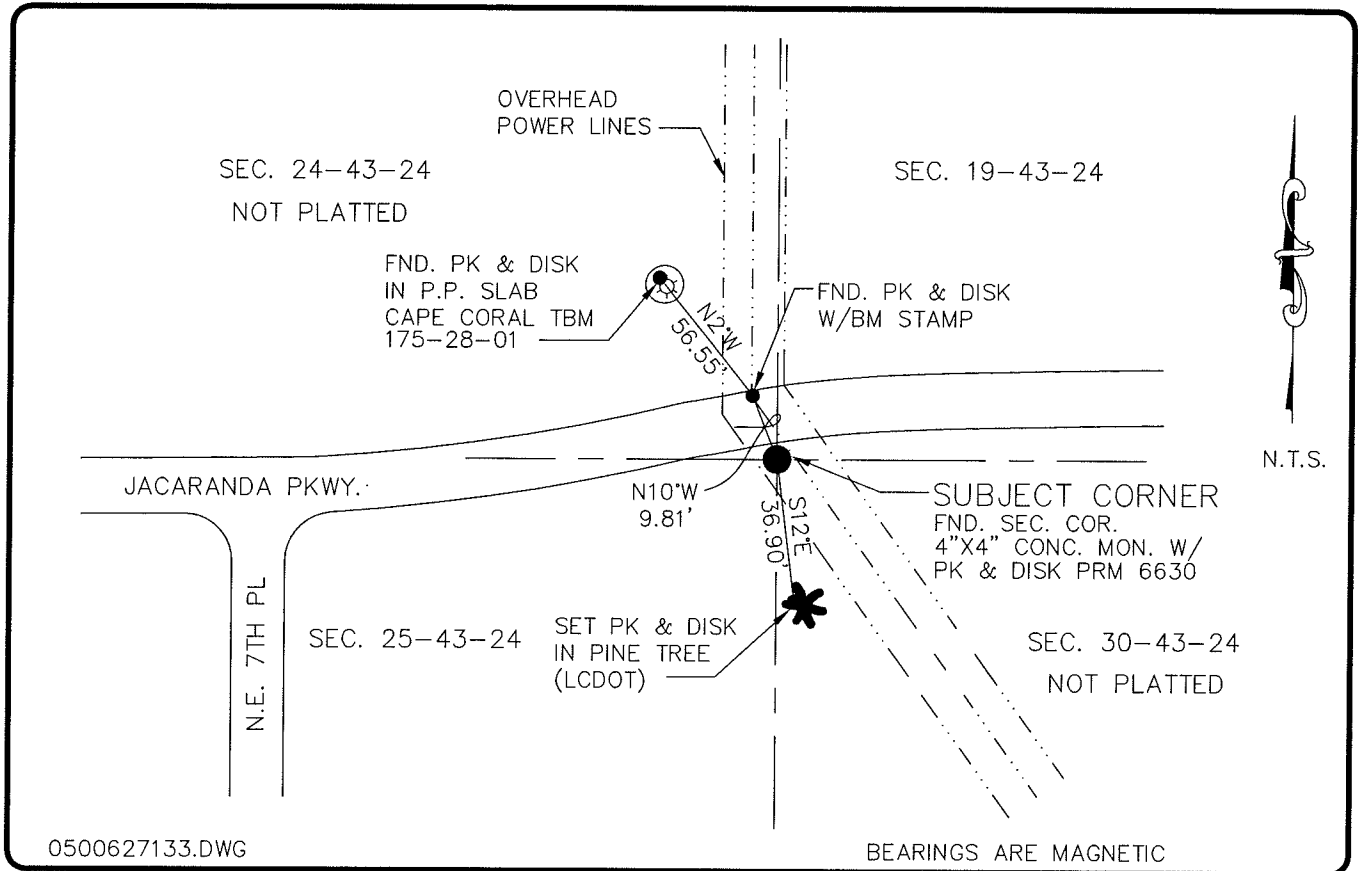


LAND CORNER RECORD

**PUBLIC WORKS
LEE COUNTY, FLORIDA**

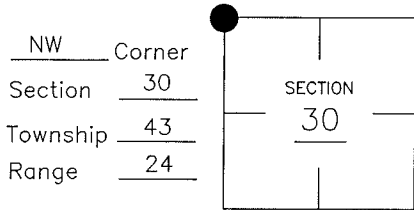
Address - 1500 Monroe St., Ft. Myers, Fla. 33901

Phone : (239) 479-8900



COMMENTS:

CORNER DESCRIPTION



SECTION CORNER IS LOCATED AT THE NORTHEAST CORNER OF JACARANDA PKWY. AS SHOWN ON THE PLAT OF UNIT 36, CAPE CORAL, PLAT BOOK 16, PAGE 130.

HORIZONTAL POSITION INFORMATION

Florida West Zone, NAD 1983(1990 Adjustment)
 Northing(ft) 864391.50 Easting(ft) 670087.54
 Latitude 26°42'42.263568" Longitude 81°57'26.482481"
 Scale Factor 0.99994139

EXISTING CERTIFIED CORNER RECORDS

Document No.	Date
48124	2-21-94
68485	6-1-00

The above documents are based on FDEP Bureau of Surveying and Mapping Record Information.

I hereby certify the monument and accessories shown above were field located on 11-9-04.

Arthur W. Parsons
Arthur W. Parsons, County Surveyor
 Professional Surveyor and Mapper
 Florida Certificate No. 2987
 Date Signed 1-17-06

Lee County Department of Transportation
 1500 Monroe Street
 Fort Myers, Florida 33901
 Phone: (239) 479-8900

POINT NO. 302

BLM REFERENCE NO. T43SR24E700300