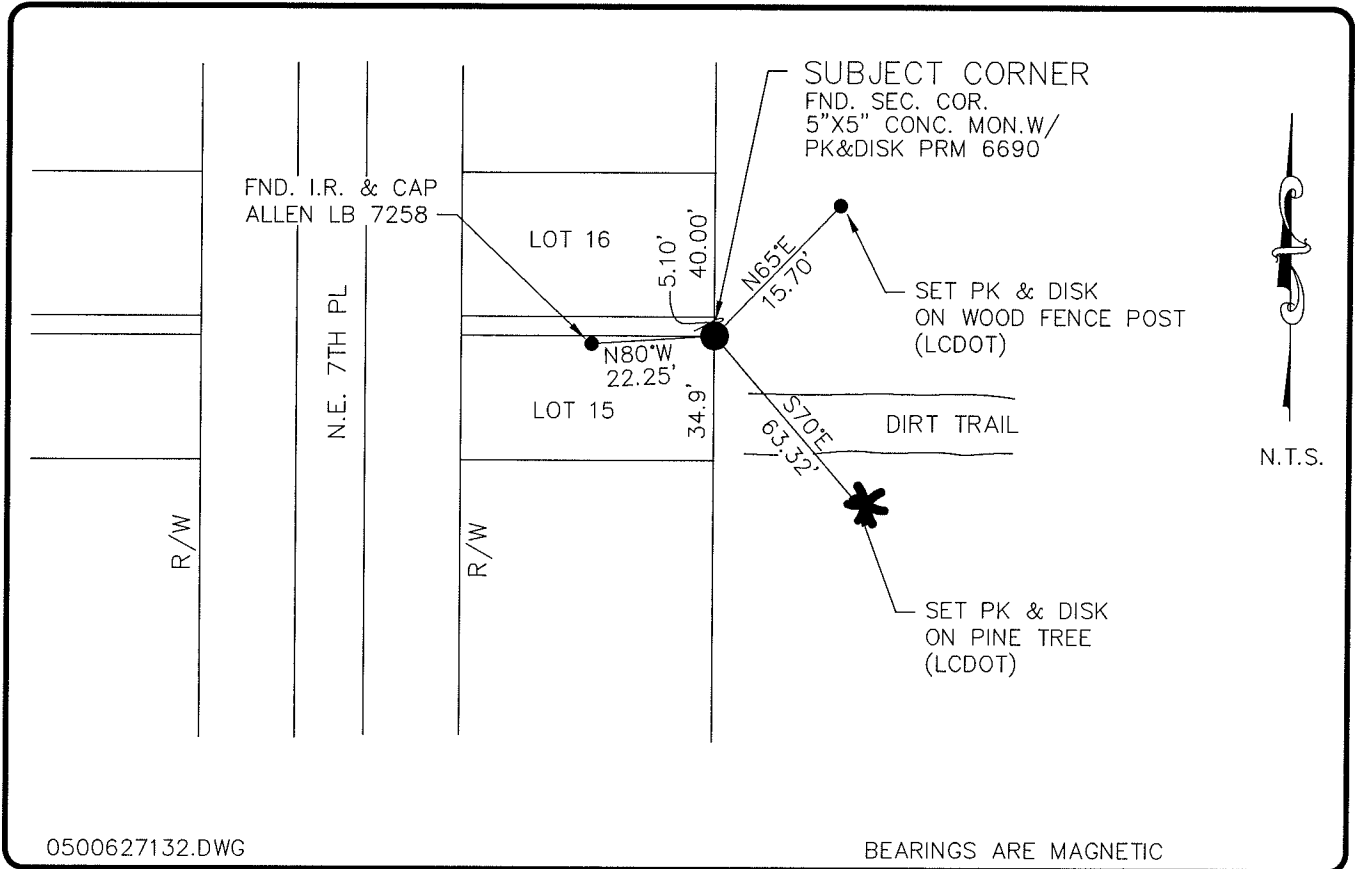


LAND CORNER RECORD

**PUBLIC WORKS
LEE COUNTY, FLORIDA**

Address - 1500 Monroe St., Ft. Myers, Fla. 33901

Phone : (239) 479-8900



0500627132.DWG

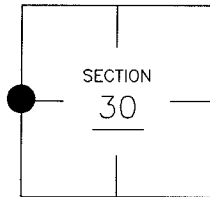
BEARINGS ARE MAGNETIC

COMMENTS:

CORNER DESCRIPTION

PLAT OF CAPE CORAL UNIT 36 PLAT BOOK 16, PAGE 127 SHOWS QUARTER CORNER 5.10' SOUTH OF NORTHEAST CORNER OF LOT 15, BLOCK 2237.

W1/4 Corner
Section 30
Township 43
Range 24



HORIZONTAL POSITION INFORMATION

Florida West Zone, NAD 1983(1990 Adjustment)
 Northing(ft) 861704.76 Easting(ft) 670059.02
 Latitude 26°42'15.654343" Longitude 81°57'26.806886"
 Scale Factor 0.99994139

EXISTING CERTIFIED CORNER RECORDS

Document No.	Date
48127	2-21-94

The above documents are based on FDEP Bureau of Surveying and Mapping Record Information.

I hereby certify the monument and accessories shown above were field located on 5-19-05.

(Signature)
Arthur W. Parsons, County Surveyor
 Professional Surveyor and Mapper
 Florida Certificate No. 2987
 Date Signed 1-17-06

Lee County Department of Transportation
 1500 Monroe Street
 Fort Myers, Florida 33901
 Phone: (239) 479-8900

POINT NO. 296

BLM REFERENCE NO. T43SR24E100240