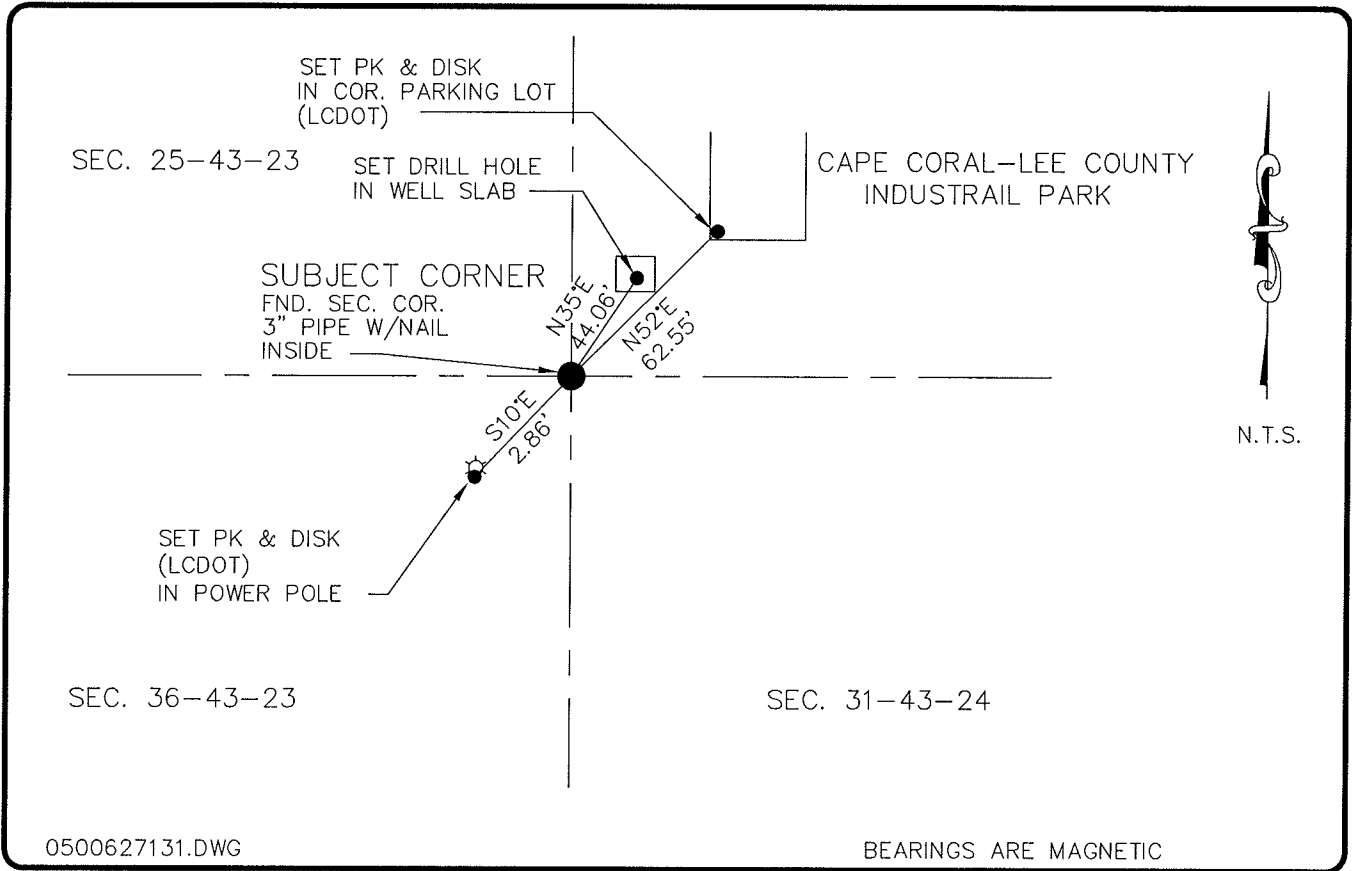


LAND CORNER RECORD

**PUBLIC WORKS
LEE COUNTY, FLORIDA**

Address - 1500 Monroe St., Ft. Myers, Fla. 33901

Phone : (239) 479-8900



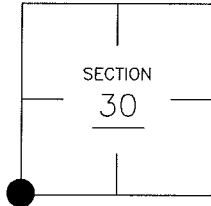
0500627131.DWG

BEARINGS ARE MAGNETIC

COMMENTS:

CORNER DESCRIPTION

SW Corner
Section 30
Township 43
Range 24



SECTION CORNER IS LOATED AT THE SOUTHWEST CORNER OF LOT 1, BLOCK 6900, PLAT BOOK 34, PAGE 142-143.

HORIZONTAL POSITION INFORMATION

Florida West Zone, NAD 1983(1990 Adjustment)
 Northing(ft) 859030.14 Easting(ft) 670034.37
 Latitude 26°41'49.165113" Longitude 81°57'27.088530"
 Scale Factor 0.99994139

EXISTING CERTIFIED CORNER RECORDS

Document No.	Date
48129	2-21-94

The above documents are based on FDEP Bureau of Surveying and Mapping Record Information.

I hereby certify the monument and accessories shown above were field located on 5-26-05.

Arthur W. Parsons
 Arthur W. Parsons, County Surveyor
 Professional Surveyor and Mapper
 Florida Certificate No. 2987
 Date Signed 5-17-06

Lee County Department of Transportation
 1500 Monroe Street
 Fort Myers, Florida 33901
 Phone: (239) 479-8900

POINT NO. 316

BLM REFERENCE NO. T43SR24E100200