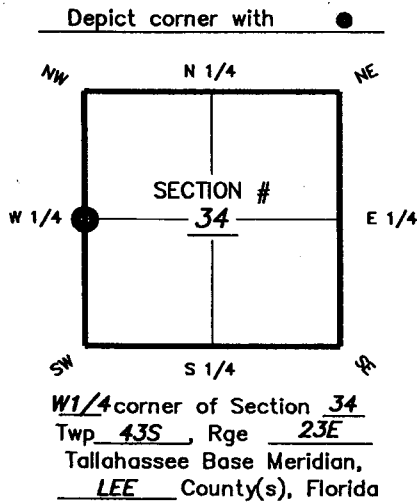


FLORIDA DEPARTMENT OF ENVIRONMENTAL PROTECTION CERTIFIED CORNER RECORD

DOC. # 091829

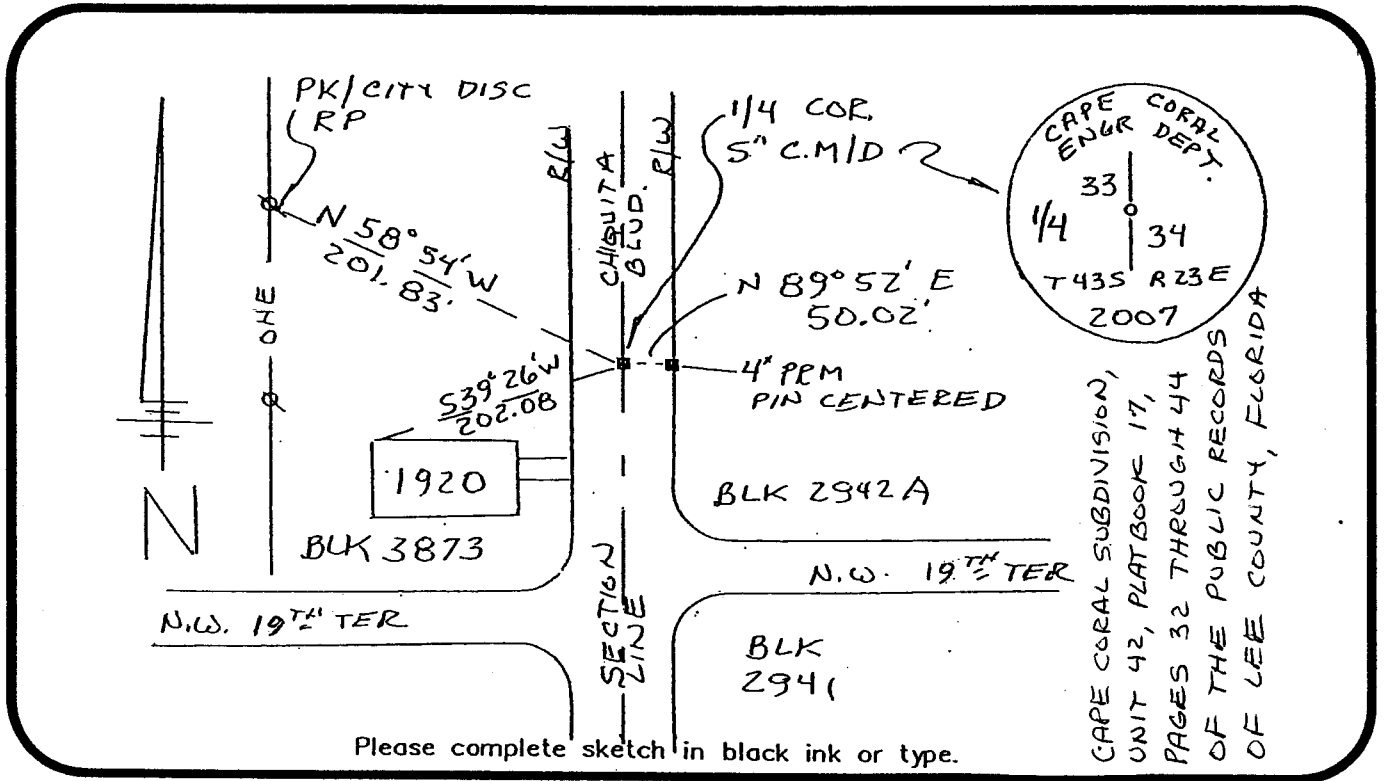
CORNER DESCRIPTION: MONUMENTATION DESCRIPTION (EVIDENCE FOUND OR METHOD TO SET)



CORNER POSITION WAS DETERMINED FROM ORIGINAL SUBDIVISION REFERENCE MONUMENTS. SET A CONCRETE MONUMENT, 24" LONG, 5" SQUARE, WITH EMBEDDED IRON ROD, AND ALUMINUM CAP MARKED AS INDICATED BELOW, IN THE REMNANTS OF THE ORIGINAL CONCRETE CORNER MONUMENT.

HORIZONTAL POSITION INFORMATION (if determined):

Latitude _____ Longitude _____
 Y(NORTHING-Ft.) 856339.16 X(EASTING-Ft.) 654019.88 Zone FL W
 Convergence _____ Scale factor _____
 Coordinate determination (circle one): Field traverse GPS
 Horizontal datum (circle one): NAD27 NAD83(1986) NAD83(1990) other (explain) _____
 Accuracy (circle one): 1st 2nd 3rd other _____



CAPE CORAL SUBDIVISION,
 UNIT 42, PLATBOOK 17,
 PAGES 32 THROUGH 44
 OF THE PUBLIC RECORDS
 OF LEE COUNTY, FLORIDA

SURVEYORS CERTIFICATE:

I certify the monument and accessories indicated above were field located on 9-6-2007

[Signature]

4374
PSM NO.

CITY OF CAPE CORAL

1015 CULTURAL PARK BLVD
ADDRESS

CAPE CORAL FL 33915

239-574-0701 9-6-2007
PHONE NUMBER DATE

SEND ORIGINAL TO:
 Department of Environmental Protection
 Bureau of Surveying and Mapping
 3900 Commonwealth Boulevard
 Mail Station 105
 Tallahassee, Florida 32399

D.E.P. USE ONLY

Processed: 9-24-07 MB

B.L.M. - I.D. 400140

QUAD - I.D. 2217 Matlacha