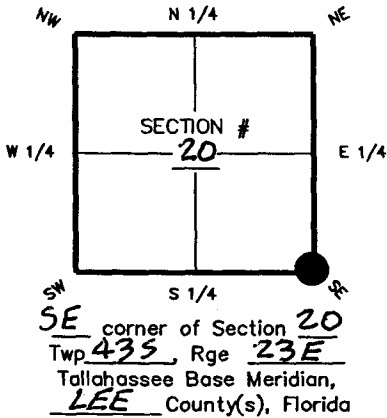


**FLORIDA DEPARTMENT OF ENVIRONMENTAL PROTECTION
CERTIFIED CORNER RECORD**

DOC. # 089055

CORNER DESCRIPTION:

Depict corner with



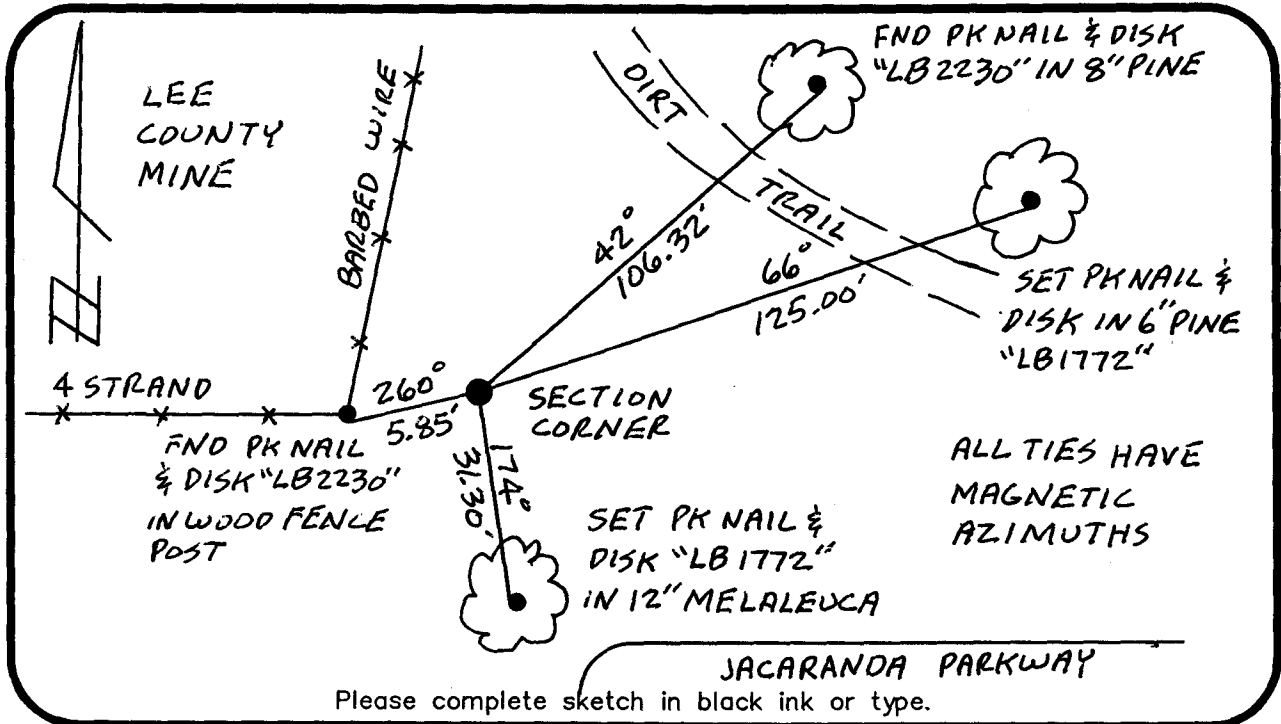
MONUMENTATION DESCRIPTION (EVIDENCE FOUND OR METHOD TO SET)

SET 4"x4" CONCRETE MONUMENT WITH HOLE MONTES "LB 1772" 2' ALUMINUM DISK. USED TIES & COORDINATE VALUES FROM CCR # 066949

ALL VALUES CHECKED OUT.

HORIZONTAL POSITION INFORMATION (if determined):

Latitude 26°42'41.370" Longitude -82°01'22.781"
 Y(NORTHING-Ft.) 864299.61 X(EASTING-Ft.) 648660.11 Zone W
 Convergence -0°00'37.2" Scale factor 0.99994124
 Coordinate determination (circle one): Field traverse (GPS)
 Horizontal datum (circle one): NAD27 NAD83(1986) (NAD83(1990)) other (explain)
 Accuracy (circle one): 1st 2nd 3rd other 1:50,000



SURVEYORS CERTIFICATE:

I certify the monument and accessories indicated above were field located on 6-19-06

BEN R. HOMOLA
Ben R. Homola
 SIGNATURE
HOLE MONTES
 FIRM OR AGENCY
6200 WHISKEY CREEK DRIVE
 ADDRESS
FORT MYERS
 CITY
239-985-1200
 PHONE NUMBER
6-26-06
 DATE

SEND ORIGINAL TO:
 Department of Environmental Protection
 Bureau of Surveying and Mapping
 3900 Commonwealth Boulevard
 Mail Station 105
 Tallahassee, Florida 32399

D.E.P. USE ONLY
 Processed: 8-1-06 MB
 B.L.M. - I.D. 300300
 QUAD - I.D. 2217 Matacha

EMBOSSSED SEAL OVER SIGNATURE