

**FLORIDA DEPARTMENT OF ENVIRONMENTAL PROTECTION  
CERTIFIED CORNER RECORD**

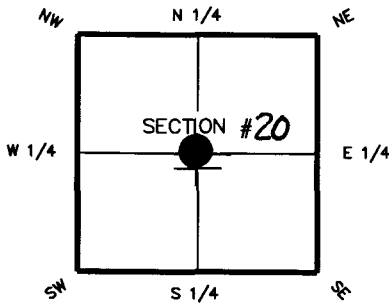
**089057**

DOC. # \_\_\_\_\_

**CORNER DESCRIPTION: MONUMENTATION DESCRIPTION (EVIDENCE FOUND OR METHOD TO SET)**

Depict corner with ●

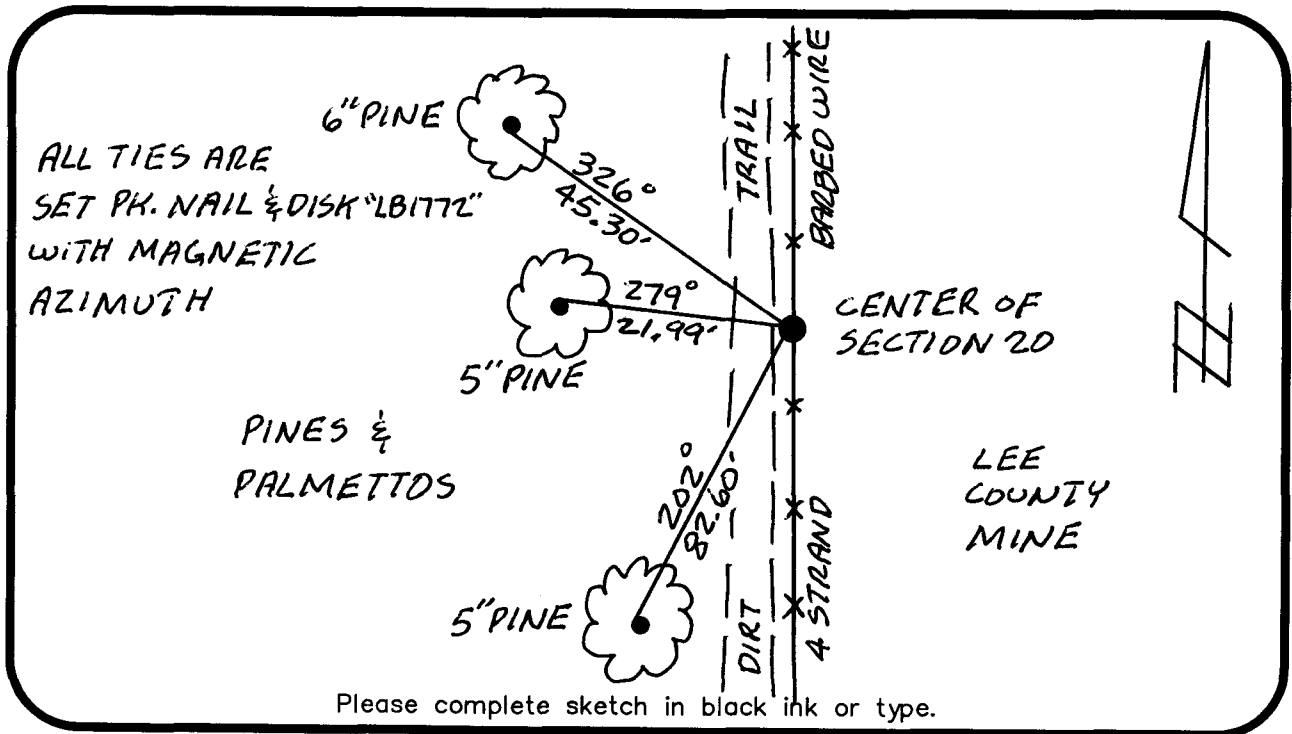
**SET 4"x4" CONCRETE MONUMENT WITH  
HOLE MONTES "LB 1772" 2" ALUMINUM DISK.  
INTERSECTION OF 1/4 CORNERS.**



**CENTER** corner of Section 20  
Twp 43S, Rge 23E  
Tallahassee Base Meridian,  
LEE County(s), Florida

**HORIZONTAL POSITION INFORMATION ( if determined ):**

Latitude 26°43'08.365" Longitude -82°01'51.908"  
Y(NORTHING-Ft.) 867025.92 X(EASTING-Ft.) 646019.60 Zone W  
Convergence -0°00'50.3" Scale factor 0.99994129  
Coordinate determination (circle one): Field traverse (GPS)  
Horizontal datum (circle one): NAD27 NAD83(1986) (NAD83(1990)) other (explain)  
Accuracy (circle one): 1st 2nd 3rd other 1:50,000



**SURVEYORS CERTIFICATE:**

I certify the monument and accessories indicated above were field located on 6-19-06

**BEN R. HOMPLA**

*Ben R. Hompla*  
SIGNATURE

**HOLE MONTES**

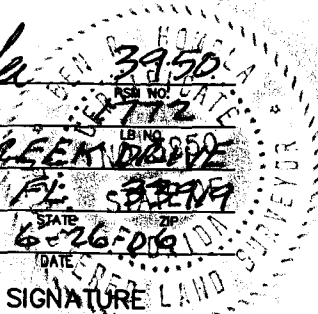
FIRM OR AGENCY

**6200 WHISKEY CREEK DRIVE**

**FORT MYERS**

**239-985-1200**

PHONE NUMBER



**SEND ORIGINAL TO:**  
Department of Environmental Protection  
Bureau of Surveying and Mapping  
3900 Commonwealth Boulevard  
Mail Station 105  
Tallahassee, Florida 32399

Processed:	<u>8-1-06</u> <b>MB</b>
B.L.M. - I.D.	<u>240340</u>
QUAD - I.D.	<u>2217 Matlacha</u>