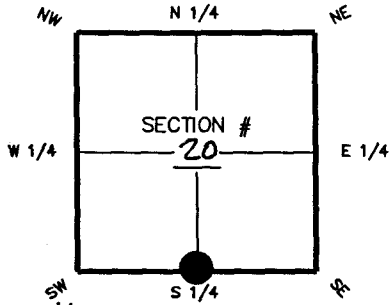


**FLORIDA DEPARTMENT OF ENVIRONMENTAL PROTECTION
CERTIFIED CORNER RECORD**

DOC. # 089056

CORNER DESCRIPTION:

Depict corner with ●



S 1/4 corner of Section 20
Twp 43S Rge 23E
Tallahassee Base Meridian,
LEE County(s), Florida

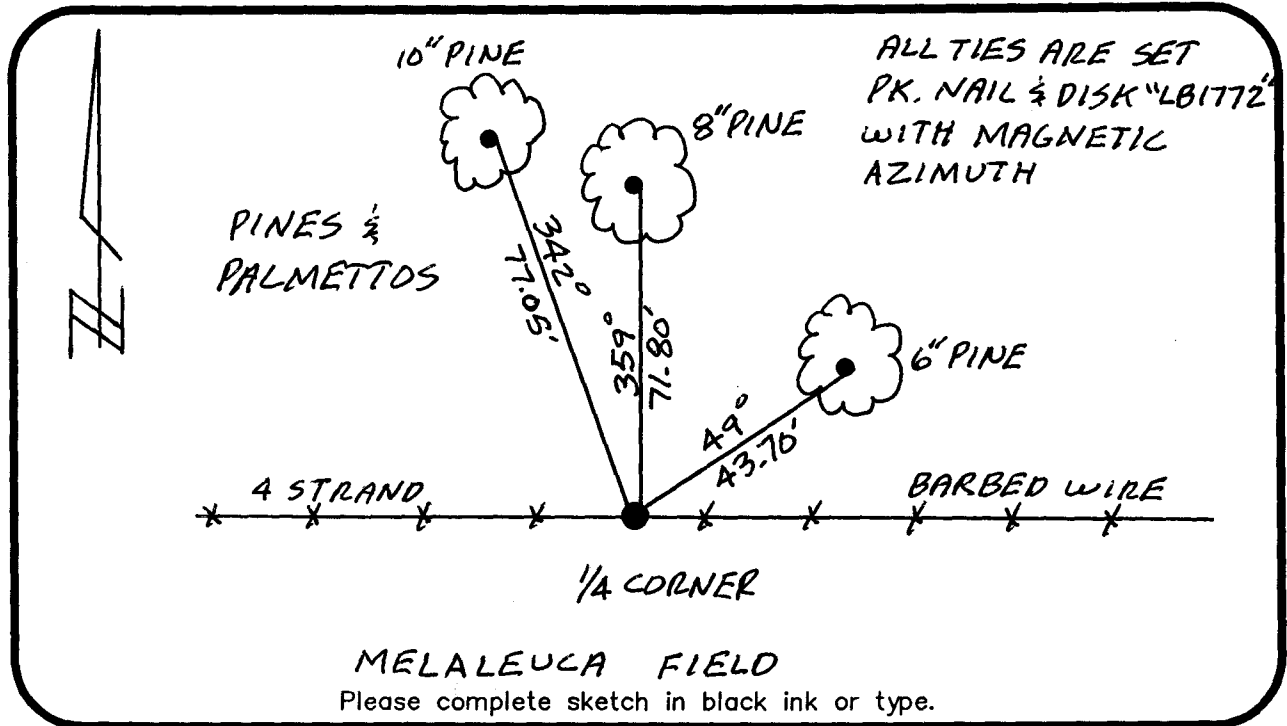
MONUMENTATION DESCRIPTION (EVIDENCE FOUND OR METHOD TO SET)

FOUND 1/2" IRON RE-BAR, REPLACED WITH 4"x4" CONCRETE MONUMENT AND HOLE MONTES "LB 1772" 2" ALUMINUM DISK.

HORIZONTAL POSITION INFORMATION (if determined):

Latitude 26°42'41.677" Longitude -82°01'52.117"
Y(NORTHING-Ft.) 864331.20 X(EASTING-Ft.) 645999.98 Zone W
Convergence -0°00'50.4" Scale factor 0.99994129

Coordinate determination (circle one): Field traverse (GPS)
Horizontal datum (circle one): NAD27 NAD83(1986) (NAD83(1990)) other (explain)
Accuracy (circle one): 1st 2nd 3rd other 1:50,000



SURVEYORS CERTIFICATE:

I certify the monument and accessories indicated above were field located on 6-19-06

BEN R. HOMOLA
Ben R. Homola
SIGNATURE
HOLE MONTES
FIRM OR AGENCY
6200 WHISKEY CREEK DRIVE
ADDRESS
FORT MYERS
CITY
239-985-1200
PHONE NUMBER
EMBOSSED SEAL OVER SIGNATURE

SEND ORIGINAL TO:
Department of Environmental Protection
Bureau of Surveying and Mapping
3900 Commonwealth Boulevard
Mail Station 105
Tallahassee, Florida 32399

D.E.P. USE ONLY
Processed: 8-1-06 MB
B.L.M. - I.D. 240300
QUAD - I.D. 2217 Matlacha