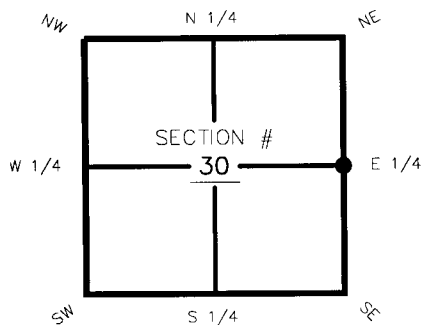


# FLORIDA DEPARTMENT OF ENVIRONMENTAL PROTECTION CERTIFIED CORNER RECORD

DOC. # 094775

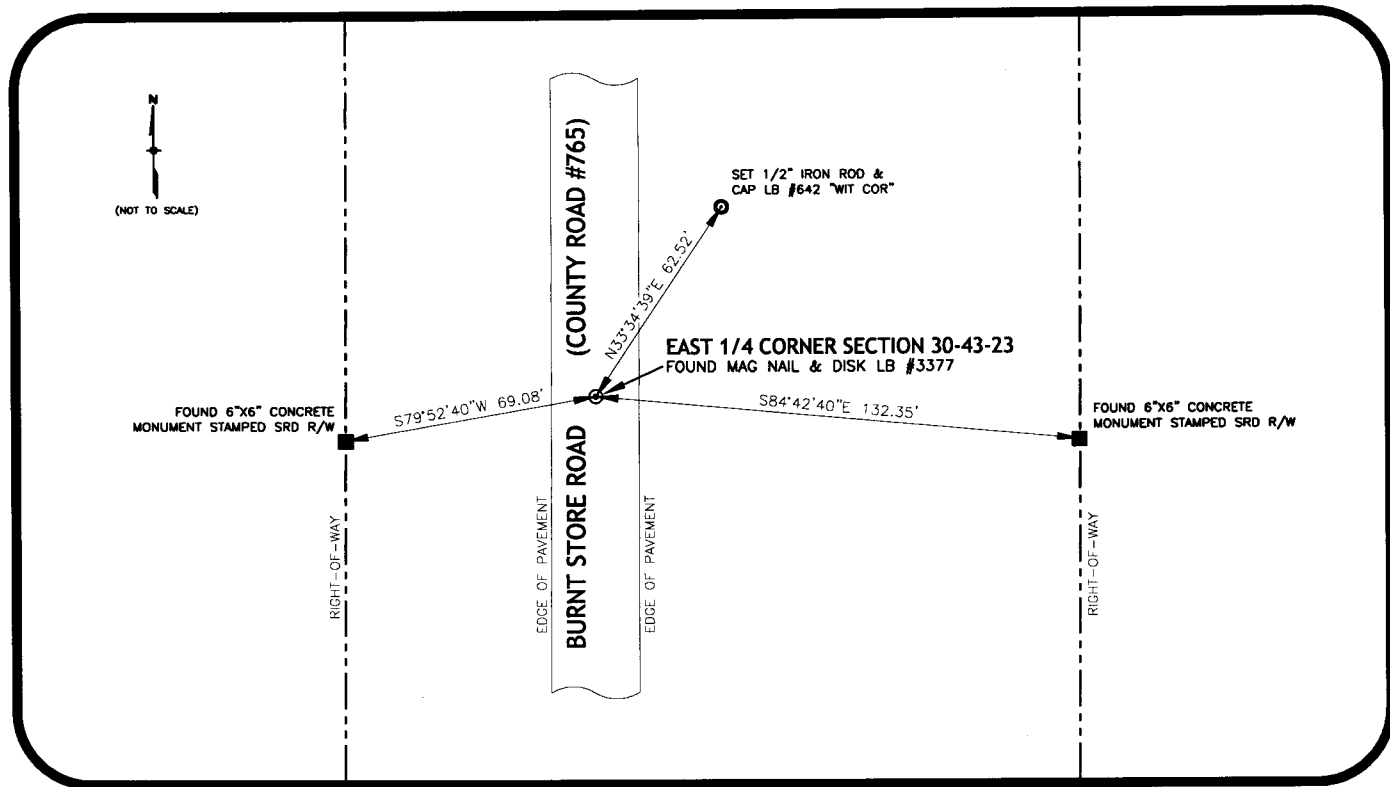
CORNER DESCRIPTION:      MONUMENTATION DESCRIPTION (EVIDENCE FOUND OR METHOD TO SET)  
 Depict corner with       **FOUND MAG NAIL & DISK LB #3377**



E1/4 corner of Section 30  
 Twp 43, Rge 23  
 Tallahassee Base Meridian,  
LEE County(s), Florida

HORIZONTAL POSITION INFORMATION ( if determined ):

Latitude 26° 42' 15.5513" N Longitude 082° 02' 21.3976" W  
 Y(NORTHING-Ft.) 861694.01 X(EASTING-Ft.) 643343.99 Zone FL W  
 Convergence -00° 01' 03.5422" Scale factor 0.999941365  
 Coordinate determination (circle one):      Field traverse (GPS)  
 Horizontal datum (circle one): NAD27 NAD83(1986) (NAD83(1990)) other (explain) \_\_\_\_\_  
 Accuracy (circle one): 1st (2nd) 3rd other \_\_\_\_\_



SURVEYORS CERTIFICATE:

I certify the monument and accessories indicated above were field located on 04/02/08

*[Signature]*  
 JOHNSON ENGINEERING  
 18501 MURDOCK CIRCLE, SUITE 404  
 PORT CHARLOTTE, FL 33948  
 941-625-9919  
 PSM NO. 6629  
 LB NO. 642  
 DATE 05/02/08

SEND ORIGINAL TO:  
 Department of Environmental Protection  
 Bureau of Surveying and Mapping  
 3900 Commonwealth Boulevard  
 Mail Station 105  
 Tallahassee, Florida 32399

Processed: 08-05-08 JH  
 B.L.M. - I.D. 260240  
 QUAD - I.D. 2217 matlacha

EMBOSSSED SEAL OVER SIGNATURE