

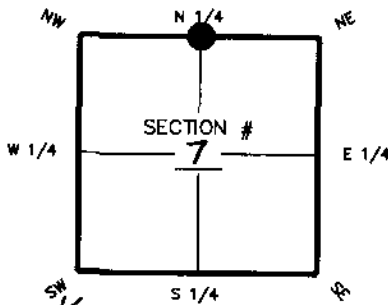
**FLORIDA DEPARTMENT OF ENVIRONMENTAL PROTECTION  
CERTIFIED CORNER RECORD**

087685

DOC. #

**CORNER DESCRIPTION:**

Depict corner with 



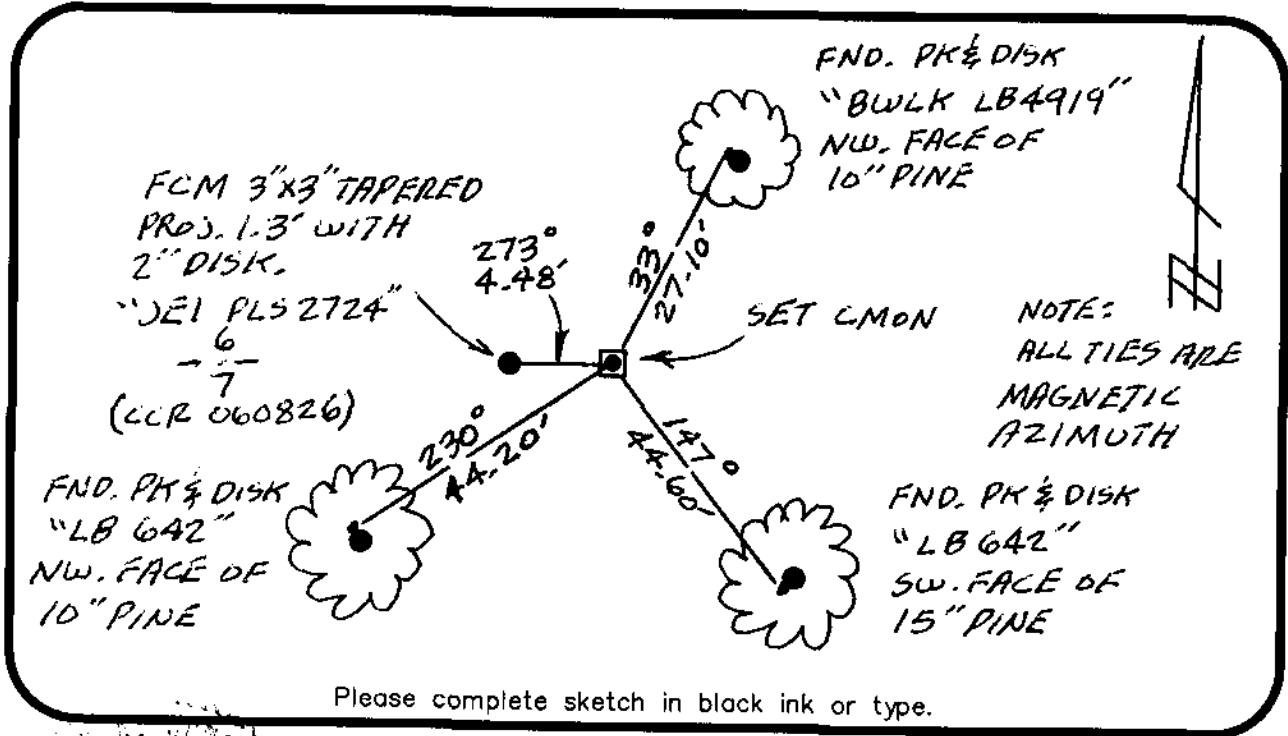
corner of Section 7  
Twp 435, Rge 23E  
Tallahassee Base Meridian,  
LEE County(s), Florida

**MONUMENTATION DESCRIPTION (EVIDENCE FOUND OR METHOD TO SET)**

SET 4" X 4" CONCRETE MONUMENT WITH 2" DISK.  
LOCATION BASED ON MONUMENTATION STAMPED  
FOUND IN CAPE CORAL UNIT 97, PLAT 2006  
BOOK 25, PAGES 85-97, PUBLIC RECORDS 6  
OF LEE COUNTY, FLORIDA. -7-  
LS3950

**HORIZONTAL POSITION INFORMATION (if determined):**

Latitude 26°45'22.5493" Longitude 82°02'47.8391"  
Y(NORTHING-Ft.) 880576.04 X(EASTING-Ft.) 640953.05 Zone W  
Convergence -0°01'15.56" Scale factor 0.99994144  
Coordinate determination (circle one): Field traverse GPS  
Horizontal datum (circle one): NAD27 NAD83(1986) NAD83(1998) other (explain)  
Accuracy (circle one): 1st 2nd 3rd other 1:50,000



Please complete sketch in black ink or type.

**SURVEYORS' CERTIFICATE:**

I certify the monument and accessories indicated above were field located on 3-16-06

Brent D. Holmes 3950  
SIGNATURE PSM NO.  
HOLE MONUMENTS 1772  
FIRM OR AGENCY LB NO.  
6200 WHISKEY CREEK DR.  
ADDRESS  
FORT MYERS FL 33919  
CITY STATE ZIP  
239-985-1200 3-27-06  
PHONE NUMBER DATE

EMBOSSSED SEAL OVER SIGNATURE

SEND ORIGINAL TO:  
Department of Environmental Protection  
Bureau of Surveying and Mapping  
3900 Commonwealth Boulevard  
Mail Station 105  
Tallahassee, Florida 32399

Processed: MAY 2 2006  
B.L.M. - I.D. 140600  
QUAD - I.D. 2317 Punta Gorda SE