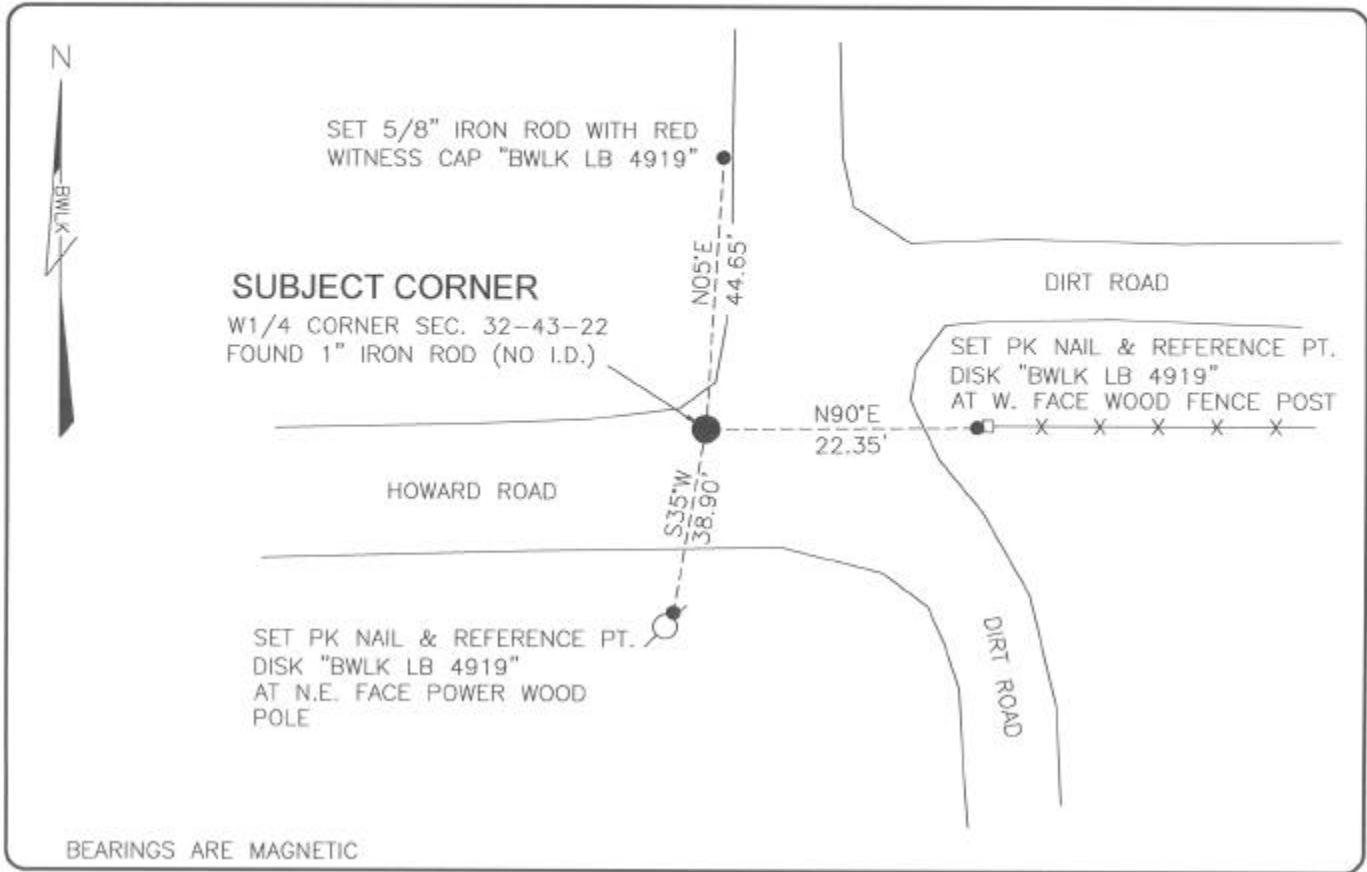


**LAND CORNER RECORD**

**PUBLIC WORKS  
LEE COUNTY, FLORIDA**

Address - 1500 Monroe St., Ft. Myers, Fla. 33901

Phone : (239) 479-8900



**COMMENTS:**

CORNER IS IN HARMONY WITH UNRECORDED PLAT DIMENSIONS OF "FLORIDA STATE PROPERTIES, INC., NO.4, PINE ISLAND" AS PREPARED BY CADASTRAL SURVEYORS JUNE, 1971.

**CORNER DESCRIPTION**

W1/4 Corner  
Section 32  
Township 43  
Range 22



**HORIZONTAL POSITION INFORMATION**

Florida West Zone, NAD 1983(1990 Adjustment)  
 Northing(ft) 855206.42 Easting(ft) 610125.68  
 Latitude 26°41'11.0660" Longitude 82°08'27.6212"  
 Scale Factor 0.99994

**EXISTING CERTIFIED CORNER RECORDS**

Document No.	Date
NONE	NONE

The above documents are based on FDEP Bureau of Surveying and Mapping Record Information.

I hereby certify the monument and accessories shown above were field located on 8-11-04

*Scott C. Whitaker*

**SCOTT C. WHITAKER**  
Professional Surveyor and Mapper  
Florida Certificate No. 4324  
Date Signed 9-03-04

BEAN, WHITAKER, LUTZ & KAREH, INC. (LB 4919)  
13041 McGregor Boulevard  
Fort Myers, Florida 33919-5910  
Phone: (239) 481-1331

POINT NO. 11562

BLM REFERENCE NO. T43SR22E200140