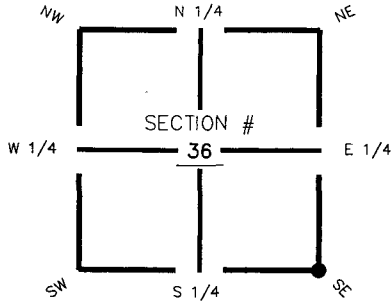


**FLORIDA DEPARTMENT OF ENVIRONMENTAL PROTECTION  
CERTIFIED CORNER RECORD**

DOC. # 089394

**CORNER DESCRIPTION: MONUMENTATION DESCRIPTION (EVIDENCE FOUND OR METHOD TO SET)**

Depict corner with  Z-25

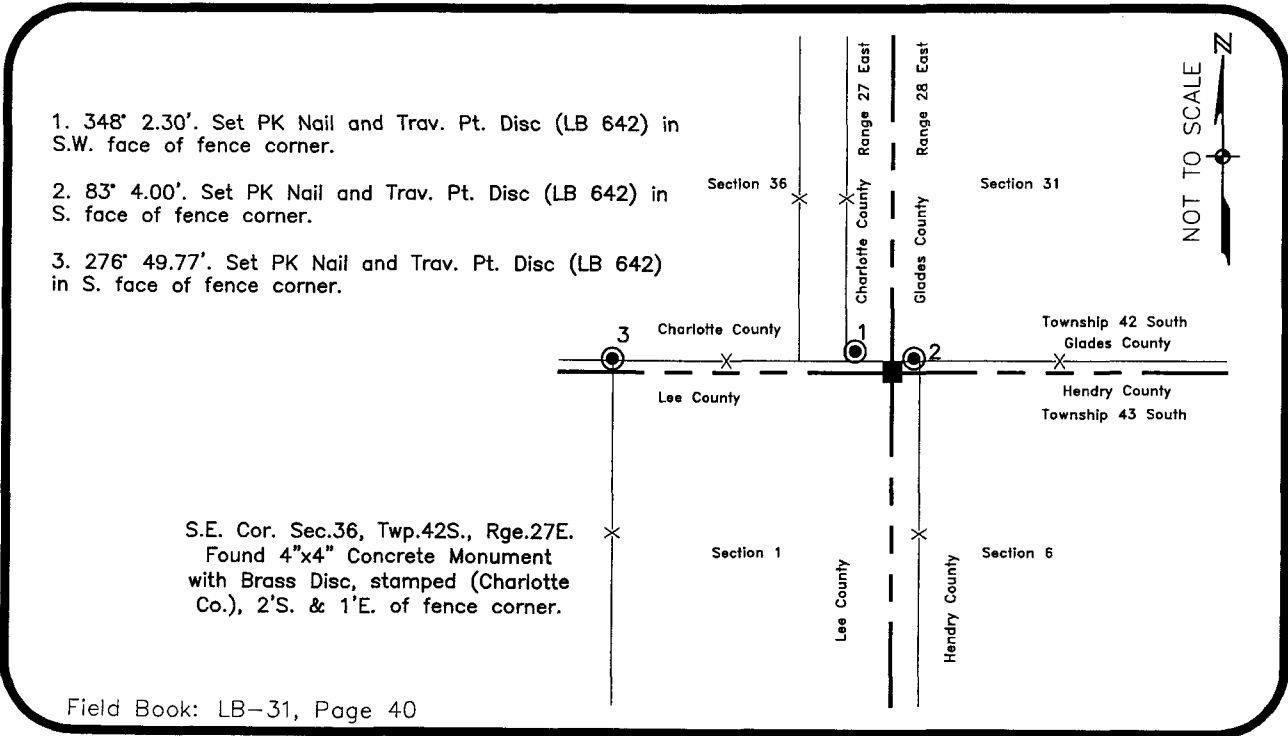


Found 4"x4"  
Concrete Monument

**HORIZONTAL POSITION INFORMATION ( if determined ):**

Latitude 26° 46' 10.38948" N Longitude 81° 33' 56.99560" W  
 Y(NORTHING-Ft.) 885645.46 X(EASTING-Ft.) 797828.09 Zone FL83-WF  
 Convergence 0° 11' 43.99302" Scale factor 0.999964185  
 Coordinate determination (circle one): Field traverse  GPS  
 Horizontal datum (circle one): NAD27 NAD83(1986)  NAD83(1999) other (explain)  
 Accuracy (circle one): 1st  2nd 3rd other \_\_\_\_\_

SE corner of Section 36  
Twp.42 South, Rge.27 East  
 Tallahassee Base Meridian,  
Charlotte County(s), Florida



1. 348' 2.30'. Set PK Nail and Trav. Pt. Disc (LB 642) in S.W. face of fence corner.
2. 83' 4.00'. Set PK Nail and Trav. Pt. Disc (LB 642) in S. face of fence corner.
3. 276' 49.77'. Set PK Nail and Trav. Pt. Disc (LB 642) in S. face of fence corner.

S.E. Cor. Sec.36, Twp.42S., Rge.27E.  
 Found 4"x4" Concrete Monument  
 with Brass Disc, stamped (Charlotte  
 Co.), 2'S. & 1'E. of fence corner.

Field Book: LB-31, Page 40

**SURVEYORS CERTIFICATE:**

I certify the monument and accessories indicated above were field located on August 30, 2005

*[Signature]*  
 SIGNATURE \_\_\_\_\_ 4912  
 JOHNSON ENGINEERING, INC. PSM NO. 642  
 FIRM OR AGENCY LB NO. \_\_\_\_\_  
 251 West Hickspine (SR80) ADDRESS \_\_\_\_\_  
 La Belle, Florida 33935  
 CITY STATE ZIP  
 (863) 612-0594 PHONE NUMBER  
 November 1, 2005 DATE

SEND ORIGINAL TO:  
 Department of Environmental Protection  
 Bureau of Surveying and Mapping  
 3900 Commonwealth Boulevard  
 Mail Station 105  
 Tallahassee, Florida 32399

Processed: 11-13-06 mib  
 B.L.M. - I.D. 700100  
 QUAD - I.D. 2313 Telegraph Swamp SE

EMBOSSSED SEAL OVER SIGNATURE