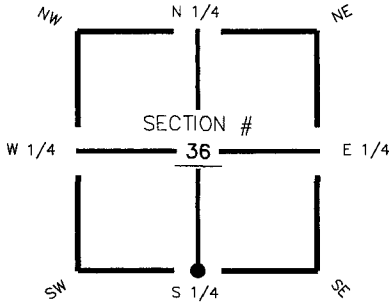


# FLORIDA DEPARTMENT OF ENVIRONMENTAL PROTECTION CERTIFIED CORNER RECORD

DOC. # 089395

CORNER DESCRIPTION: MONUMENTATION DESCRIPTION (EVIDENCE FOUND OR METHOD TO SET)

Depict corner with ● Z-23



Found Lt. Wood Post

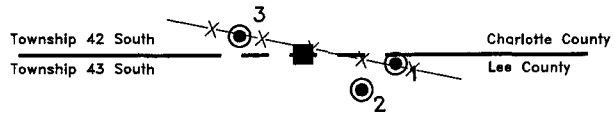
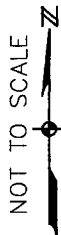
HORIZONTAL POSITION INFORMATION ( if determined ):

Latitude 26° 46' 10.16320" N Longitude 81° 34' 26.40548" W  
 Y(NORTHING-Ft.) 885613.60 X(EASTING-Ft.) 795162.60 Zone FL83-WF  
 Convergence 0° 11' 30.74461" Scale factor 0.999963327  
 Coordinate determination (circle one): Field traverse (GPS)  
 Horizontal datum (circle one): NAD27 NAD83(1986) (NAD83(1999)) other (explain)  
 Accuracy (circle one): 1st (2nd) 3rd other \_\_\_\_\_

S1/4 corner of Section 36  
Twp 42 South, Rge 27 East  
 Tallahassee Base Meridian,  
Charlotte County(s), Florida

1. 94' 16.60'. Set PK Nail and Trav. Pt. Disc (LB 642) in S. face of fence post.
2. 135' 12.20'. Set PK Nail and Trav. Pt. Disc (LB 642) in N. face of Cabbage Palm tree.
3. 275' 11.42'. Set PK Nail and Trav. Pt. Disc (LB 642) in S. face of fence post.

Section 36



S 1/4 Sec.36, Twp.42S., Rge.27E.  
 Found Lt. Wood Post  
 0.5'S. of E.-W. fence line.

Section 1

Field Book: LB-31, Page 42

SURVEYORS CERTIFICATE:

I certify the monument and accessories indicated above were field located on August 31, 2005

*[Signature]*  
 SIGNATURE \_\_\_\_\_ 4912  
 Johnson Engineering, Inc. PSM NO. \_\_\_\_\_ 642  
 FIRM OR AGENCY LB NO. \_\_\_\_\_  
 251 West Hickpothge (SR80) ADDRESS \_\_\_\_\_  
 La Belle STATE Florida 33935  
 CITY STATE ZIP  
 (863) 612-0594 DATE November 1, 2005  
 PHONE NUMBER DATE

SEND ORIGINAL TO:  
 Department of Environmental Protection  
 Bureau of Surveying and Mapping  
 3900 Commonwealth Boulevard  
 Mail Station 105  
 Tallahassee, Florida 32399

D.E.P. USE ONLY

Processed: 11-13-06 MB

B.L.M. - I.D. 640100

QUAD - I.D. 2313 Telegraphswamp SE

EMBOSSSED SEAL OVER SIGNATURE