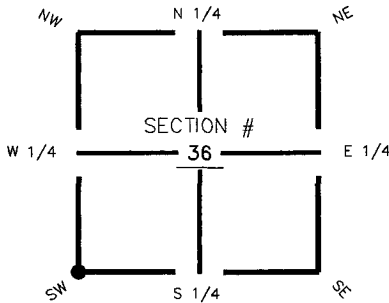


FLORIDA DEPARTMENT OF ENVIRONMENTAL PROTECTION CERTIFIED CORNER RECORD

DOC. # 089396

CORNER DESCRIPTION: MONUMENTATION DESCRIPTION (EVIDENCE FOUND OR METHOD TO SET)

Depict corner with Z-21



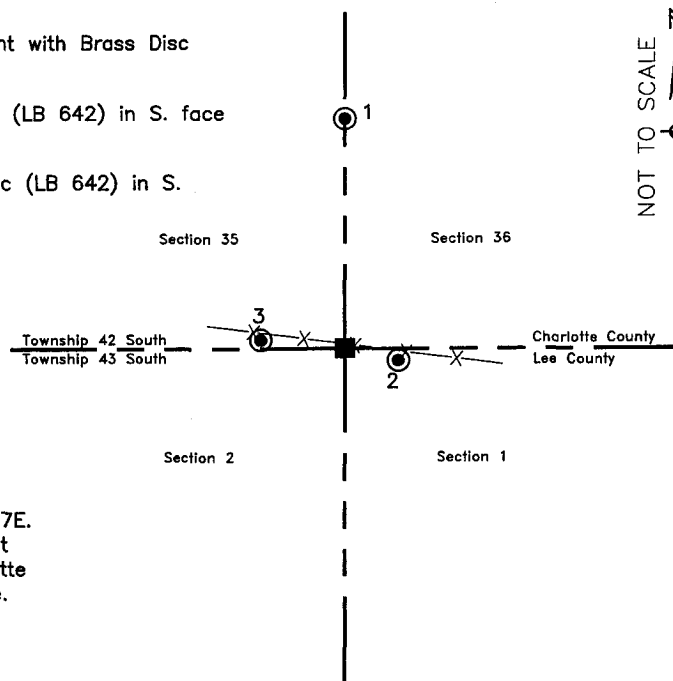
Found 4"x4"
Concrete Monument

SW corner of Section 36
Twp 42 South, Rge 27 East
Tallahassee Base Meridian,
Charlotte County(s), Florida

HORIZONTAL POSITION INFORMATION (if determined):

Latitude 26° 46' 09.97221" N Longitude 81° 34' 55.76259" W
 Y(NORTHING-Ft.) 885585.49 X(EASTING-Ft.) 792501.88 Zone FL83-WF
 Convergence 0° 11' 17.52028" Scale factor 0.999962487
 Coordinate determination (circle one): Field traverse GPS
 Horizontal datum (circle one): NAD27 NAD83(1986) NAD83(1999) other (explain)
 Accuracy (circle one): 1st 2nd 3rd other _____

1. 00° 60.96'. Found 4"x4" Concrete Monument with Brass Disc stamped Ref. Mon. 4226.35.Z21 Witness.
2. 93° 10.21'. Set PK Nail and Trav. Pt. Disc (LB 642) in S. face of fence post.
3. 274° 17.14'. Set PK Nail and Trav. Pt. Disc (LB 642) in S. face of fence post.



S.W. Cor. Sec.36, Twp.42S., Rge.27E.
Found 4"x4" Concrete Monument
with Brass Disc, stamped (Charlotte
Co.), 0.3'S. of E.-W. fence line.

Field Book: LB-31, Page 43

SURVEYORS CERTIFICATE:

I certify the monument and accessories indicated above were field located on August 31, 2005

[Signature]
 SIGNATURE _____ 4912
 Johnson Engineering, Inc. PSM NO. _____ 642
 FIRM OR AGENCY LB NO. _____
 251 West Hickpochee, (SR80) ADDRESS _____
 La Belle, Florida 33935 CITY STATE ZIP _____
 (863) 612-0594 November 1, 2005 PHONE NUMBER DATE _____

EMBOSSSED SEAL OVER SIGNATURE

SEND ORIGINAL TO:
 Department of Environmental Protection
 Bureau of Surveying and Mapping
 3900 Commonwealth Boulevard
 Mail Station 105
 Tallahassee, Florida 32399

DE.P. USE ONLY
 Processed: 11-13-06 MB
 B.L.M. - I.D. 600100
 QUAD - I.D. 2313 Telegraph Swamp SE