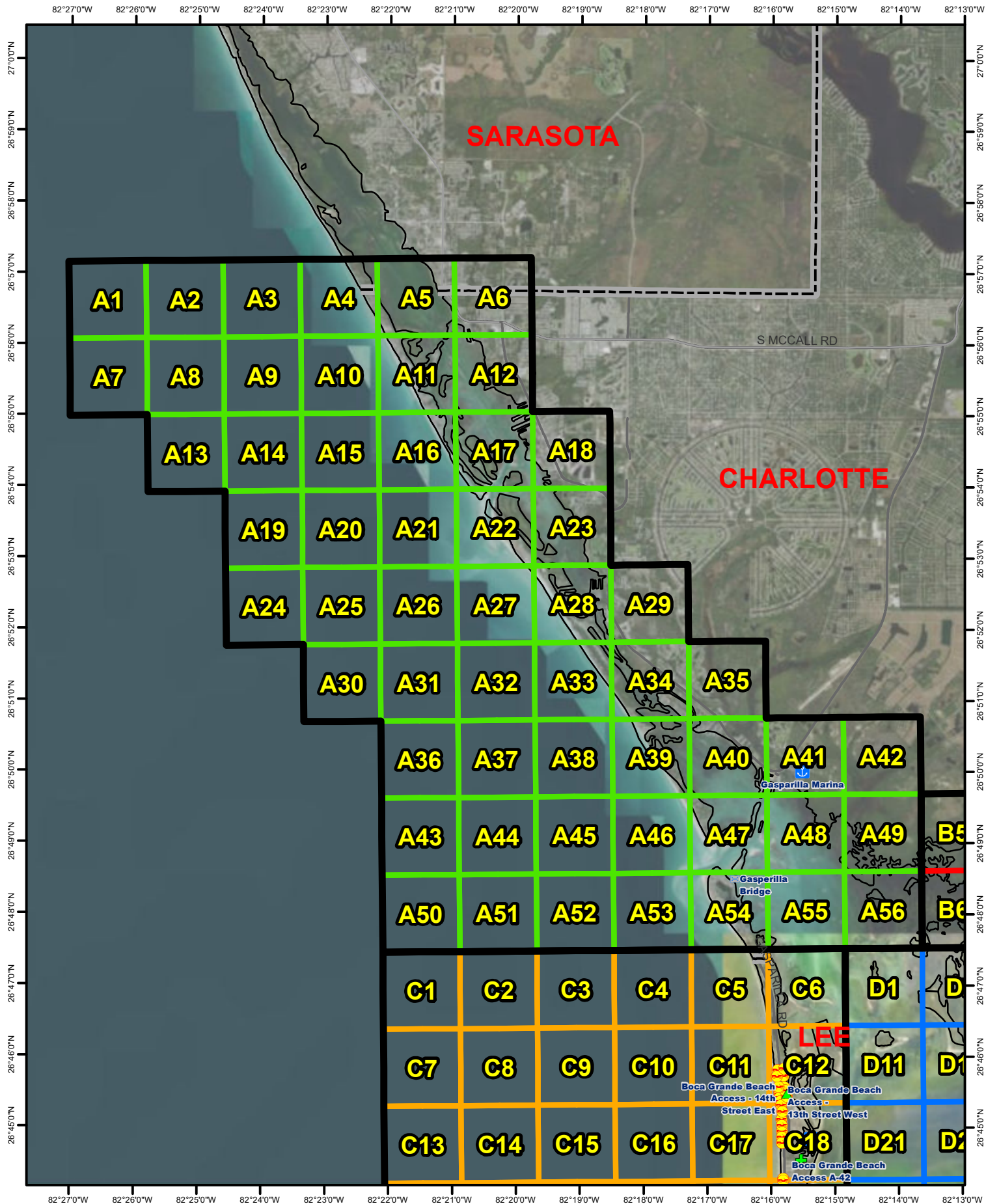


CHARLOTTE/LEE/COLLIER MERT GRIDS

1 GRID = 1.2 NAUTICAL SQ MILES
 1 GRID = 4 USNG 1000M GRIDS



OCTOBER 2019

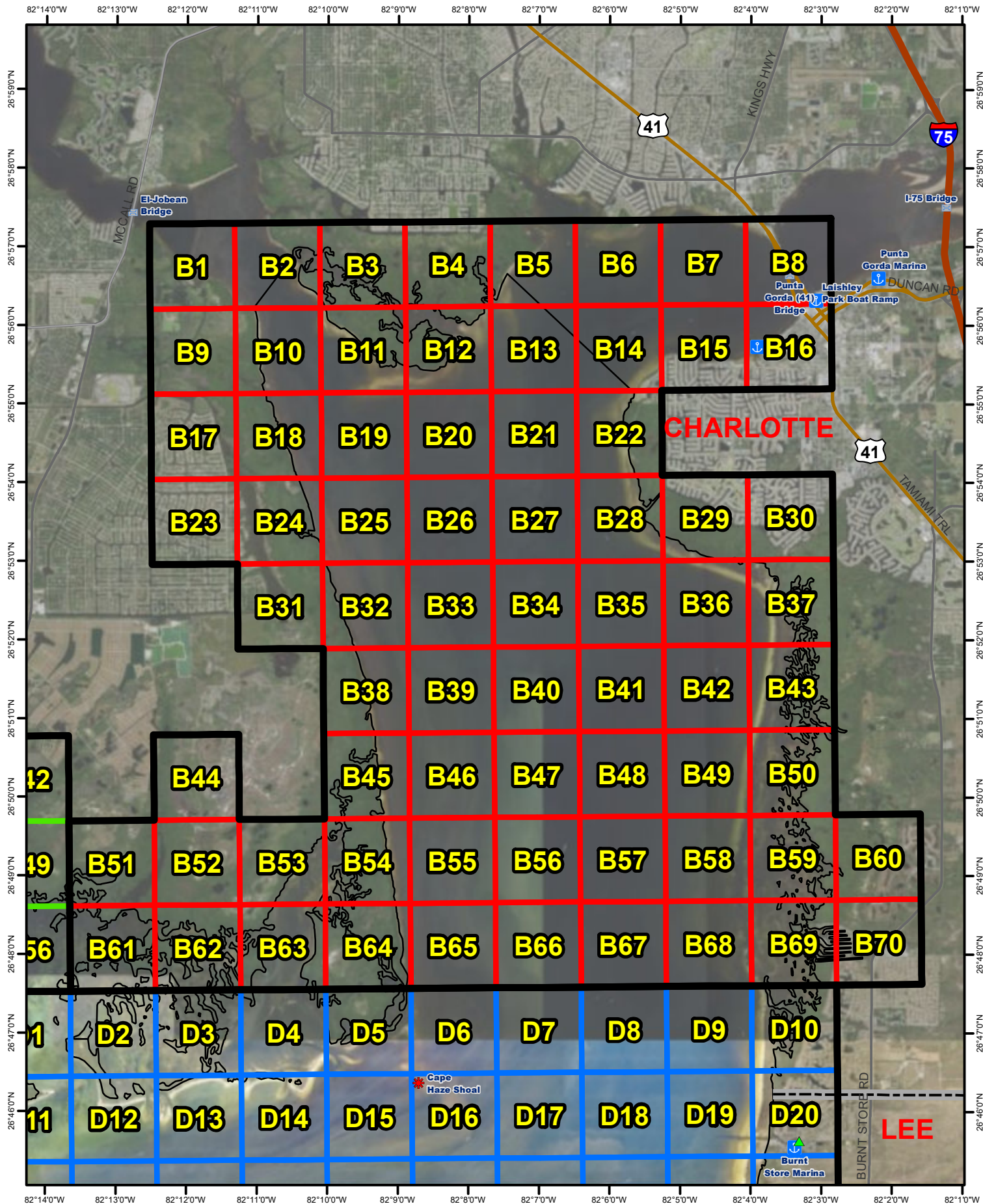


- Beach
- Beach Access
- Boat Ramp
- Bridge
- Landing Site
- Lock
- Landmark
- Marina
- Shoal
- MO "A"

A GRIDS

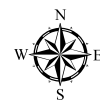
1 GRID = 1.2 NAUTICAL SQ MILES
 1 GRID = 4 USNG 1000M GRIDS

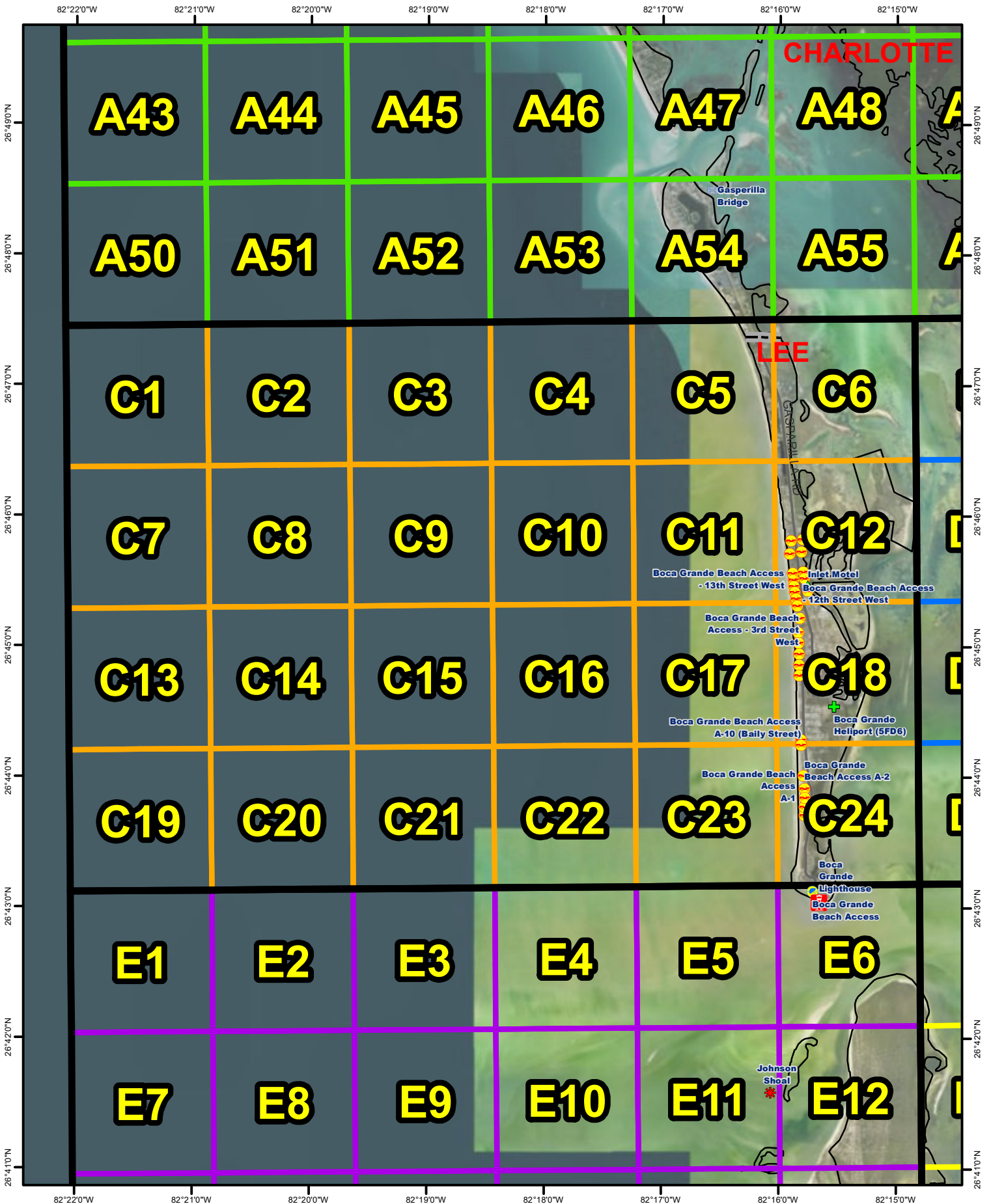




B GRIDS

1 GRID = 1.2 NAUTICAL SQ MILES
 1 GRID = 4 USNG 1000M GRIDS



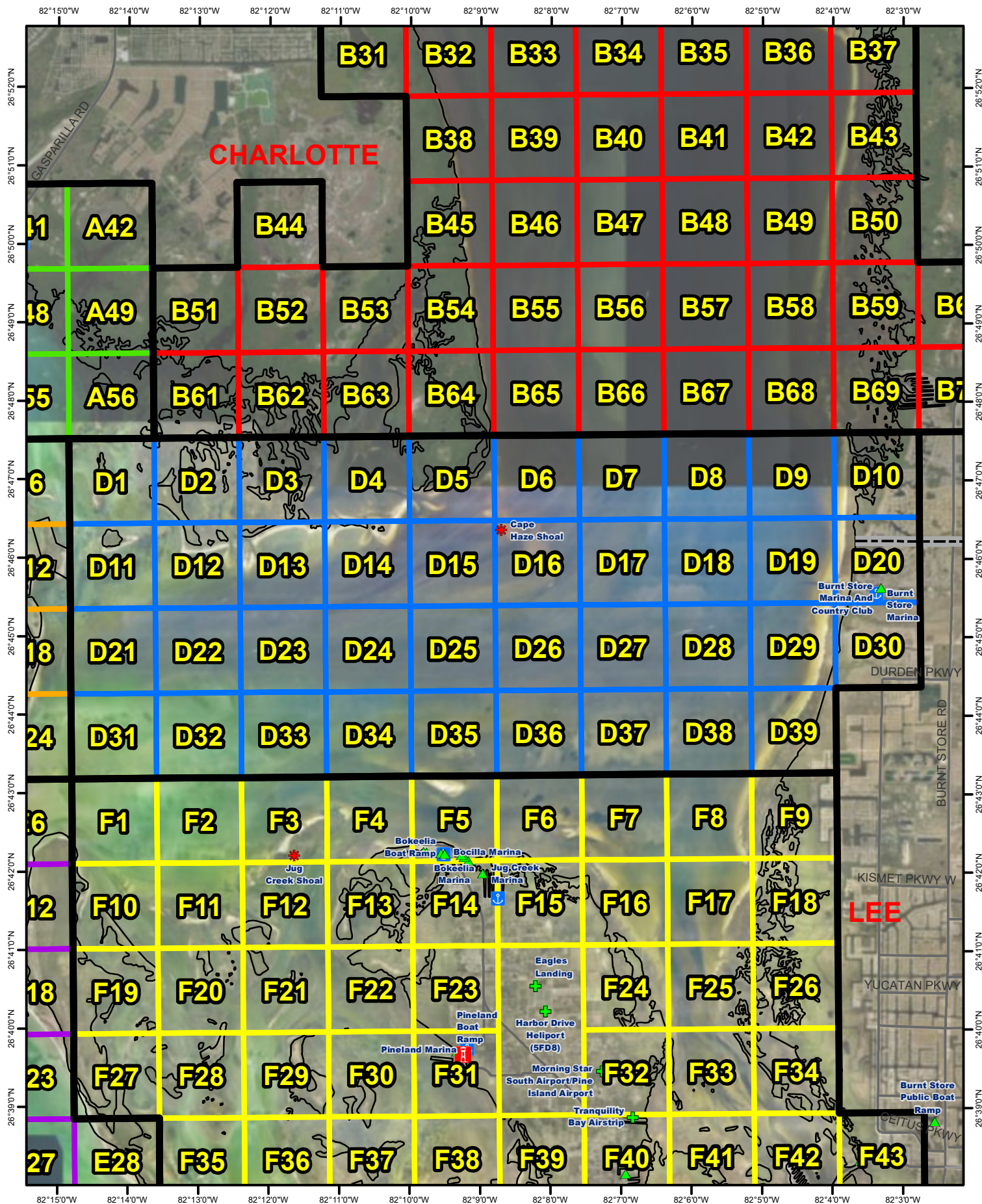


- Beach
- Beach Access
- Boat Ramp
- Bridge
- Landing Site
- Lock
- Landmark
- Marina
- Shoal
- MO "A"

C GRIDS

1 GRID = 1.2 NAUTICAL SQ MILES
 1 GRID = 4 USNG 1000M GRIDS



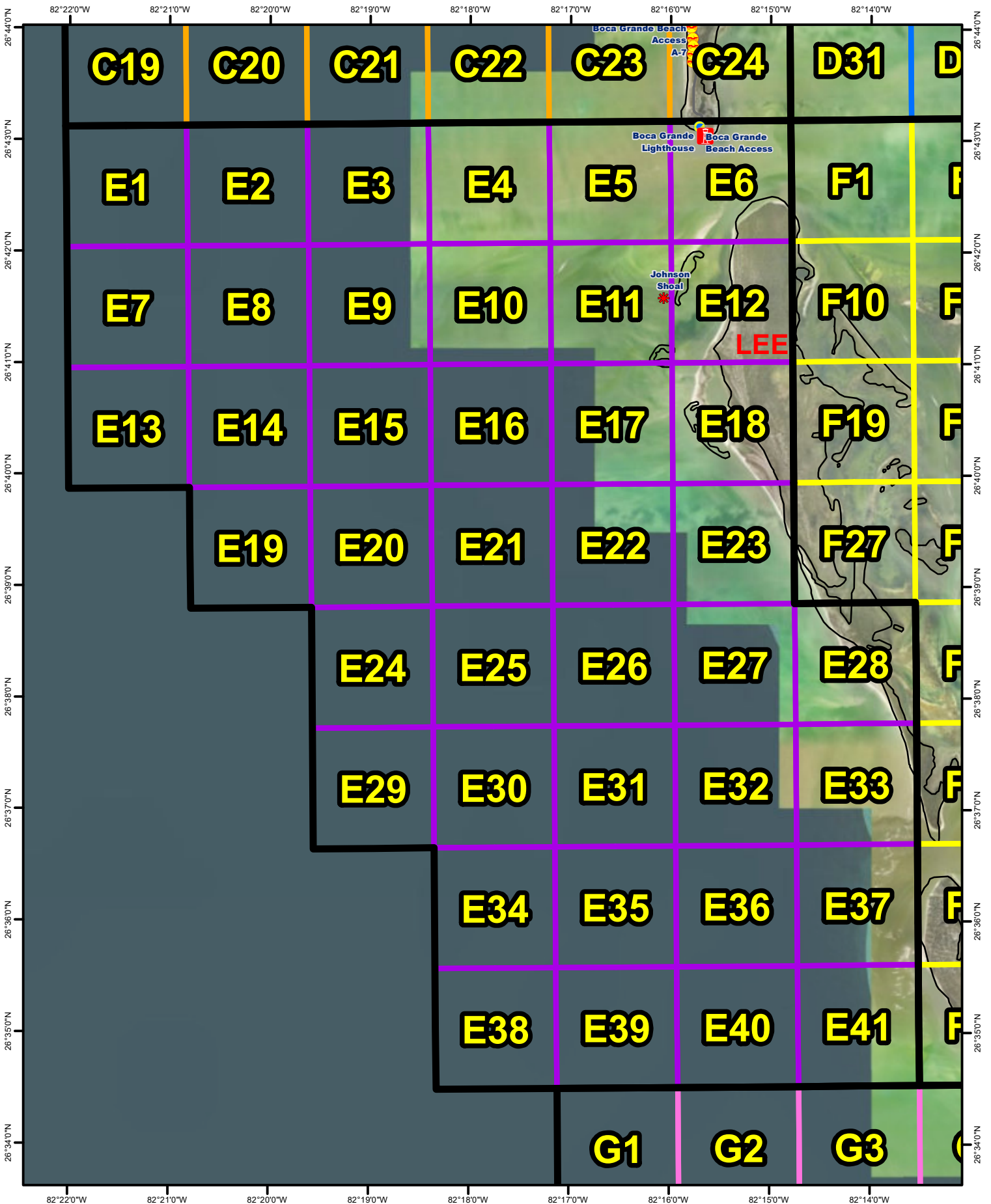


- Beach
- Beach Access
- Boat Ramp
- Bridge
- Landing Site
- Lock
- Landmark
- Marina
- Shoal
- MO "A"

D GRIDS

1 GRID = 1.2 NAUTICAL SQ MILES
 1 GRID = 4 USNG 1000M GRIDS



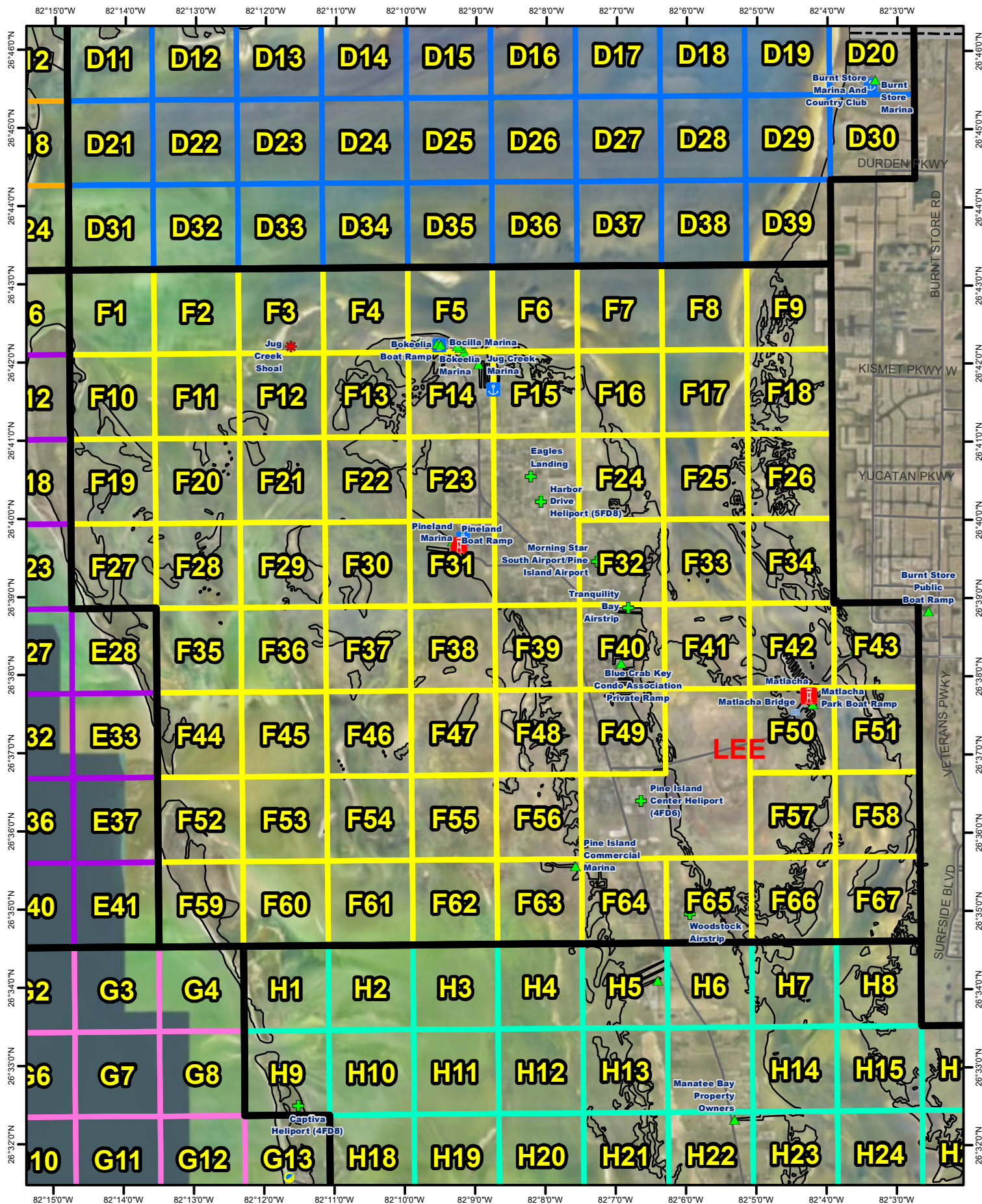


E GRIDS

1 GRID = 1.2 NAUTICAL SQ MILES
 1 GRID = 4 USNG 1000M GRIDS



OCT 2019

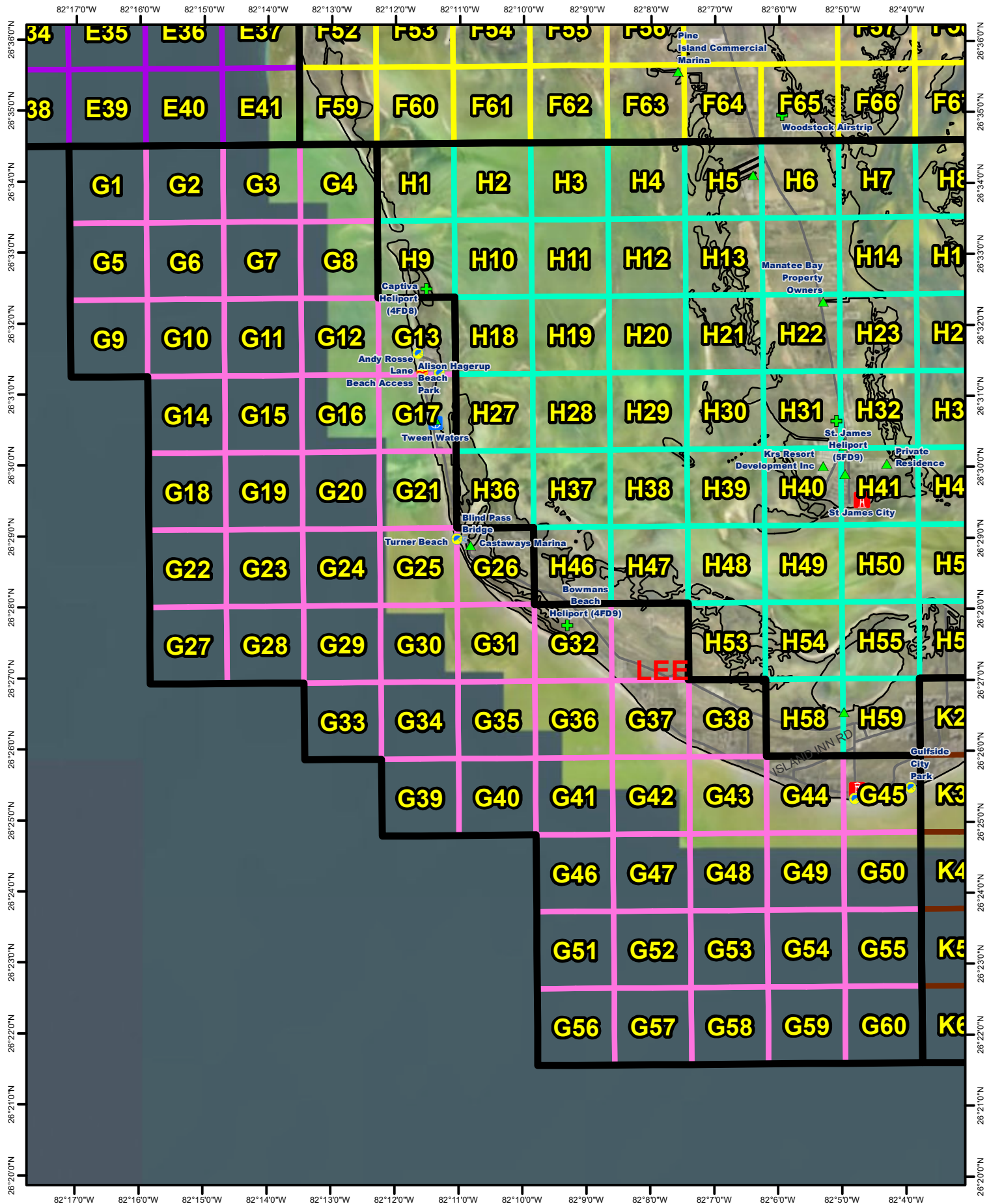


- Beach
- Beach Access
- Boat Ramp
- Bridge
- Landing Site
- Lock
- Landmark
- Marina
- Shoal
- MO "A"
- Marina

F GRIDS

1 GRID = 1.2 NAUTICAL SQ MILES
 1 GRID = 4 USNG 1000M GRIDS



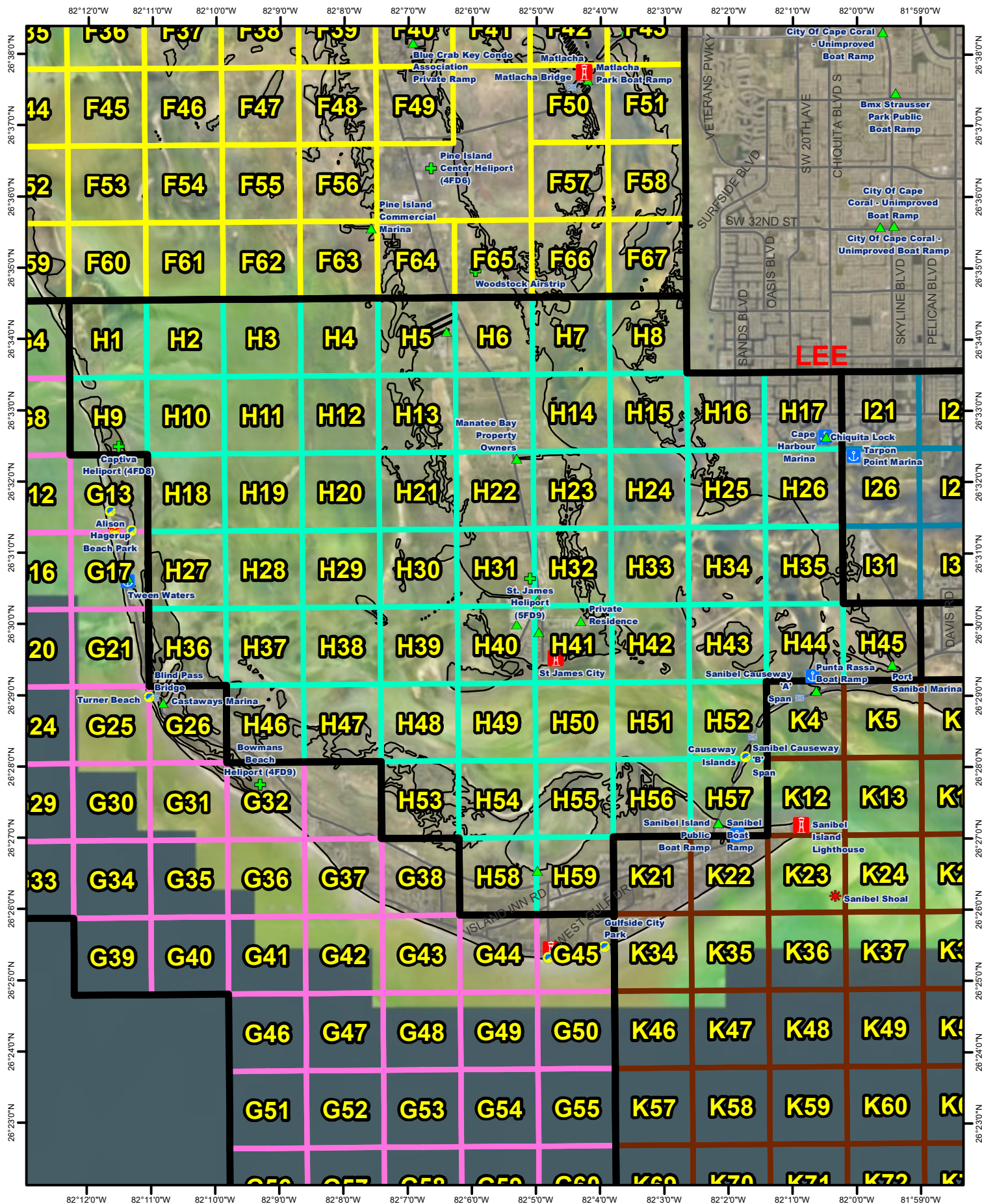


- Beach
- Beach Access
- Boat Ramp
- Bridge
- Landing Site
- Lock
- Landmark
- Marina
- Shoal
- MO "A"

G GRIDS

1 GRID = 1.2 NAUTICAL SQ MILES
 1 GRID = 4 USNG 1000M GRIDS



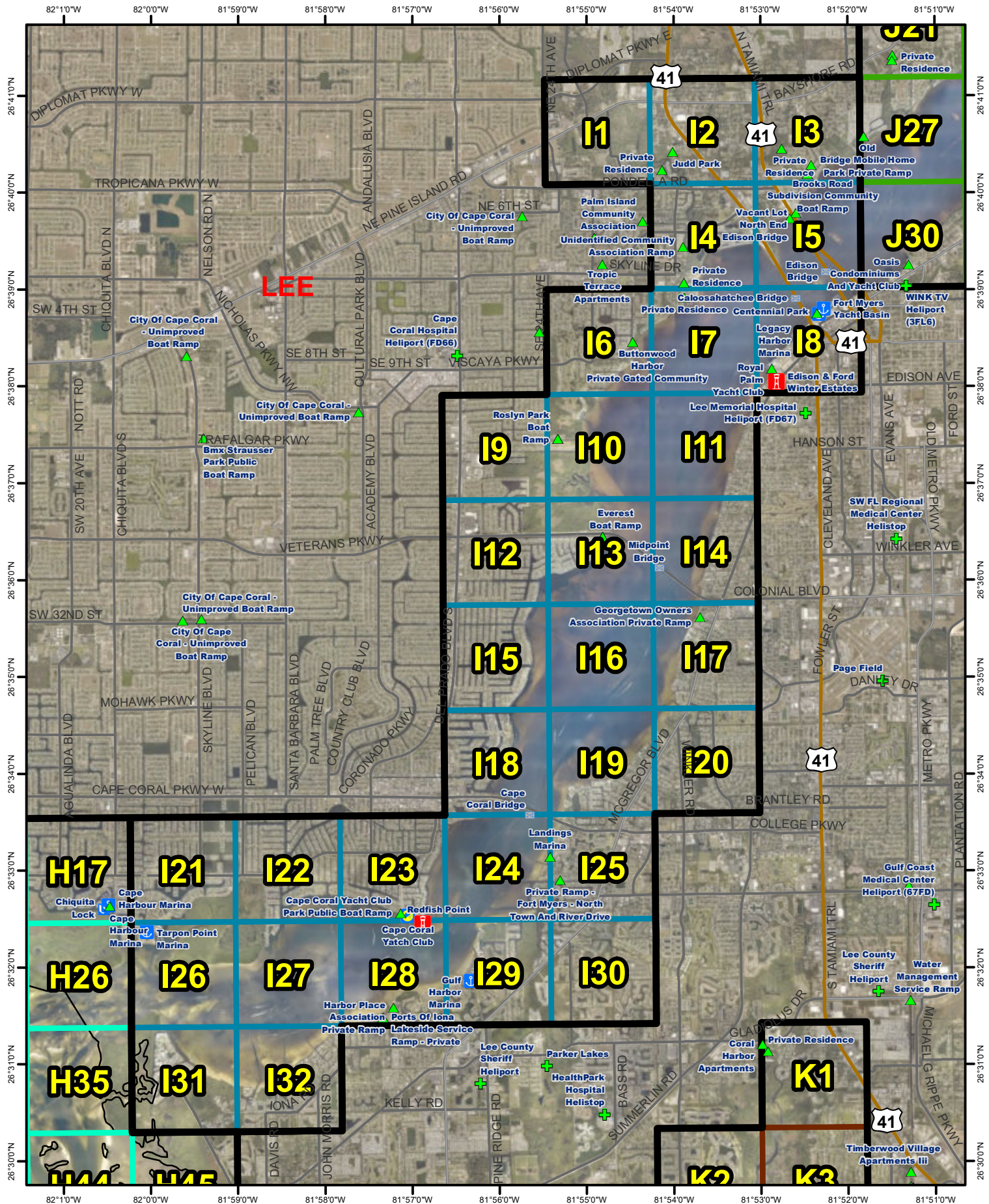


- Beach
- Beach Access
- Boat Ramp
- Bridge
- Landing Site
- Lock
- Landmark
- Marina
- Shoal
- MO "A"

H GRIDS

1 GRID = 1.2 NAUTICAL SQ MILES
 1 GRID = 4 USNG 1000M GRIDS



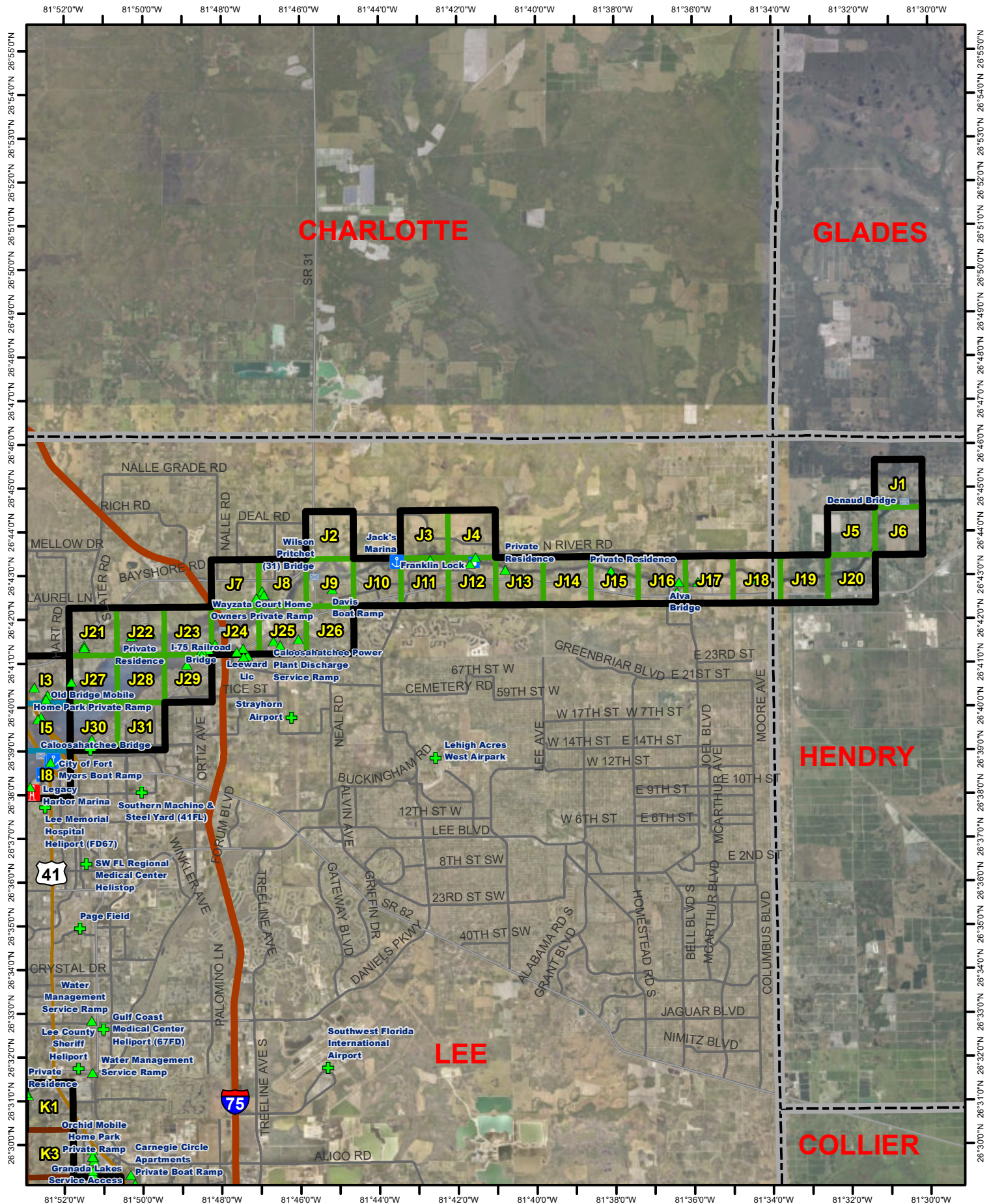


- Beach
- Beach Access
- Boat Ramp
- Bridge
- Landing Site
- Lock
- Landmark
- Marina
- Shoal
- MO "A"

I GRIDS

1 GRID = 1.2 NAUTICAL SQ MILES
 1 GRID = 4 USNG 1000M GRIDS





CHARLOTTE

GLADES

HENDRY

LEE

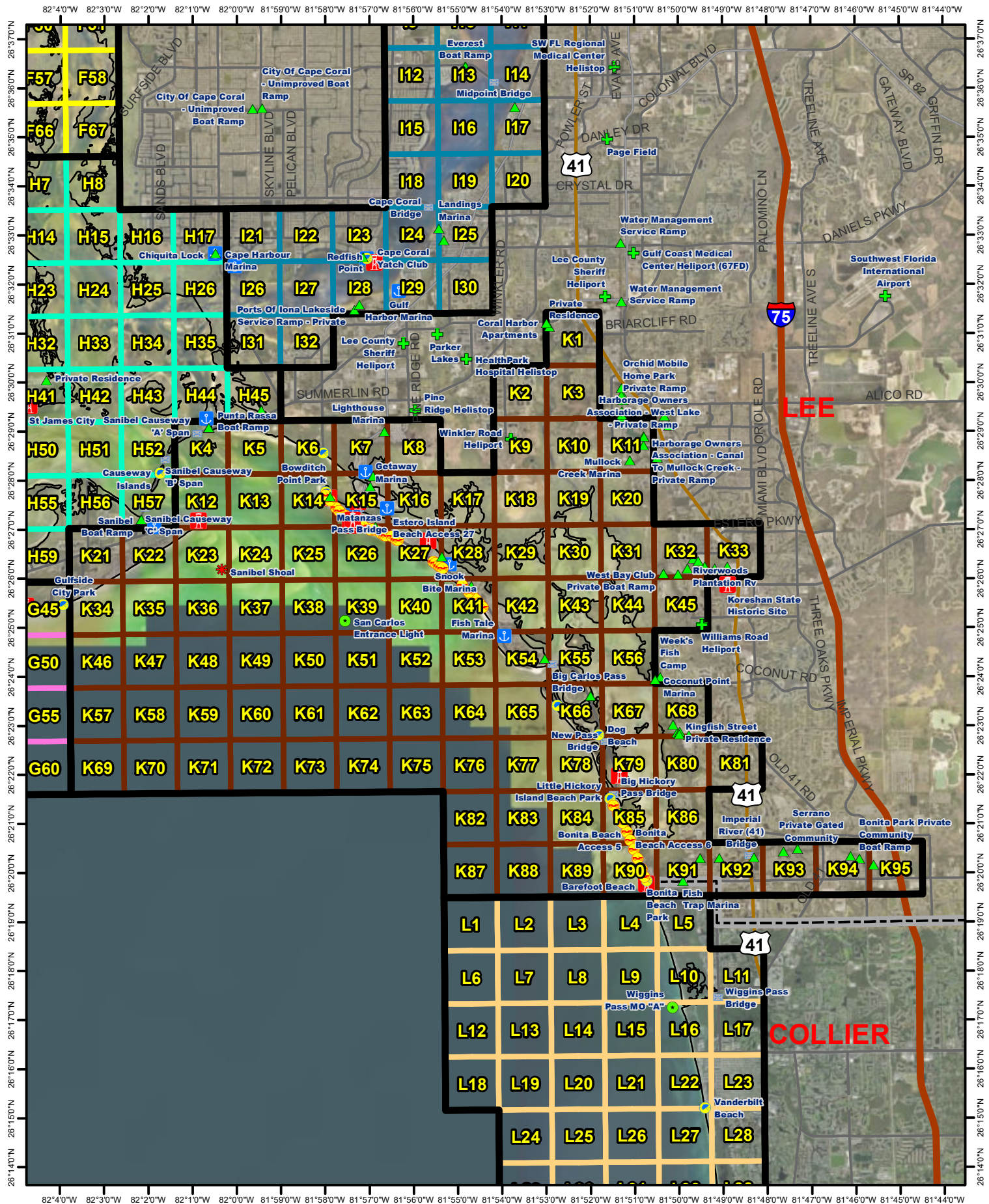
COLLIER

- Beach
- Beach Access
- Boat Ramp
- Bridge
- Landing Site
- Lock
- Landmark
- Marina
- Shoal
- MO "A"

J GRIDS

1 GRID = 1.2 NAUTICAL SQ MILES
 1 GRID = 4 USNG 1000M GRIDS



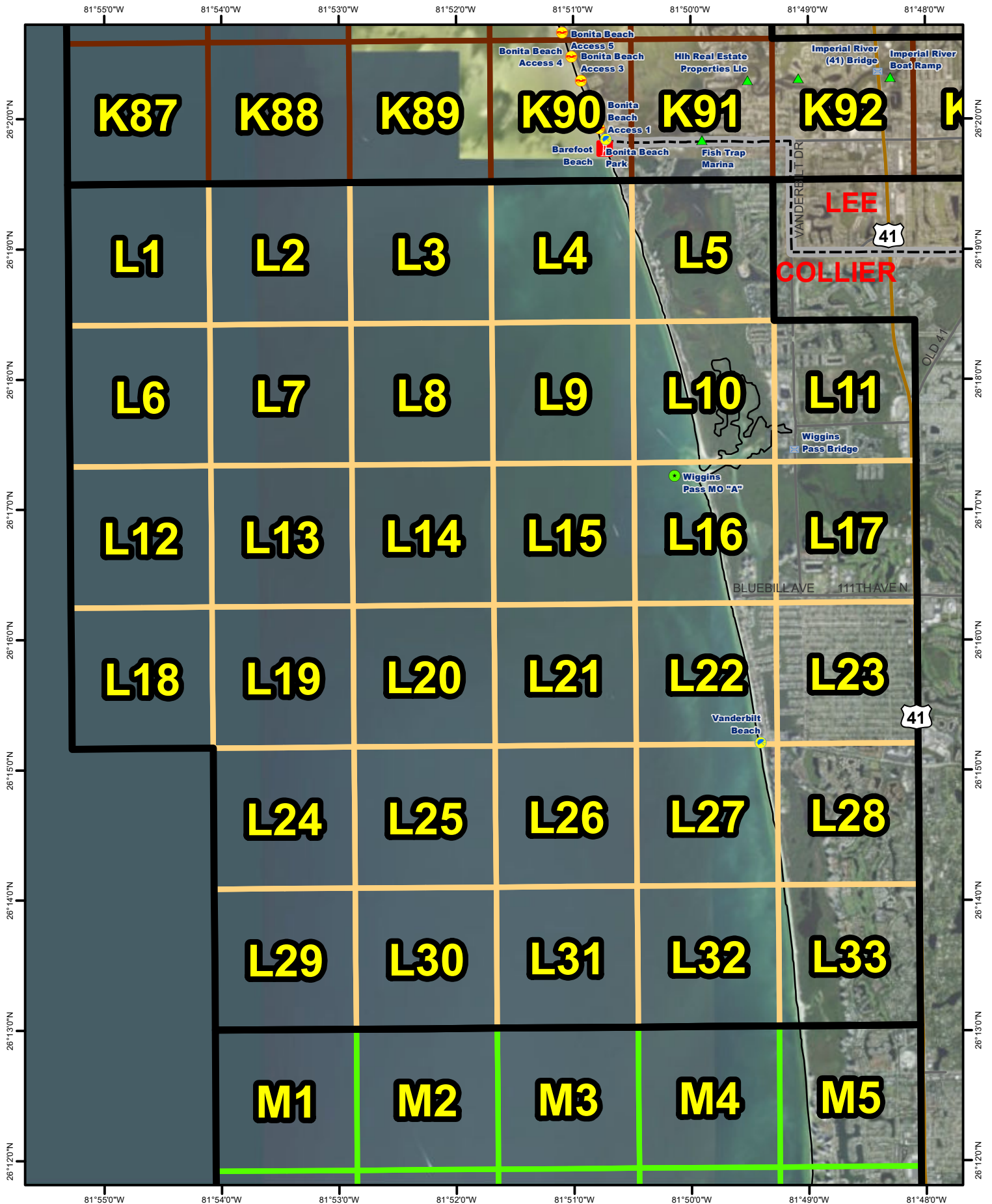


- Beach
- Beach Access
- Boat Ramp
- Bridge
- Landing Site
- Lock
- Landmark
- MO "A"
- Marina
- Shoal

K GRIDS

1 GRID = 1.2 NAUTICAL SQ MILES
1 GRID = 4 USNG 1000M GRIDS



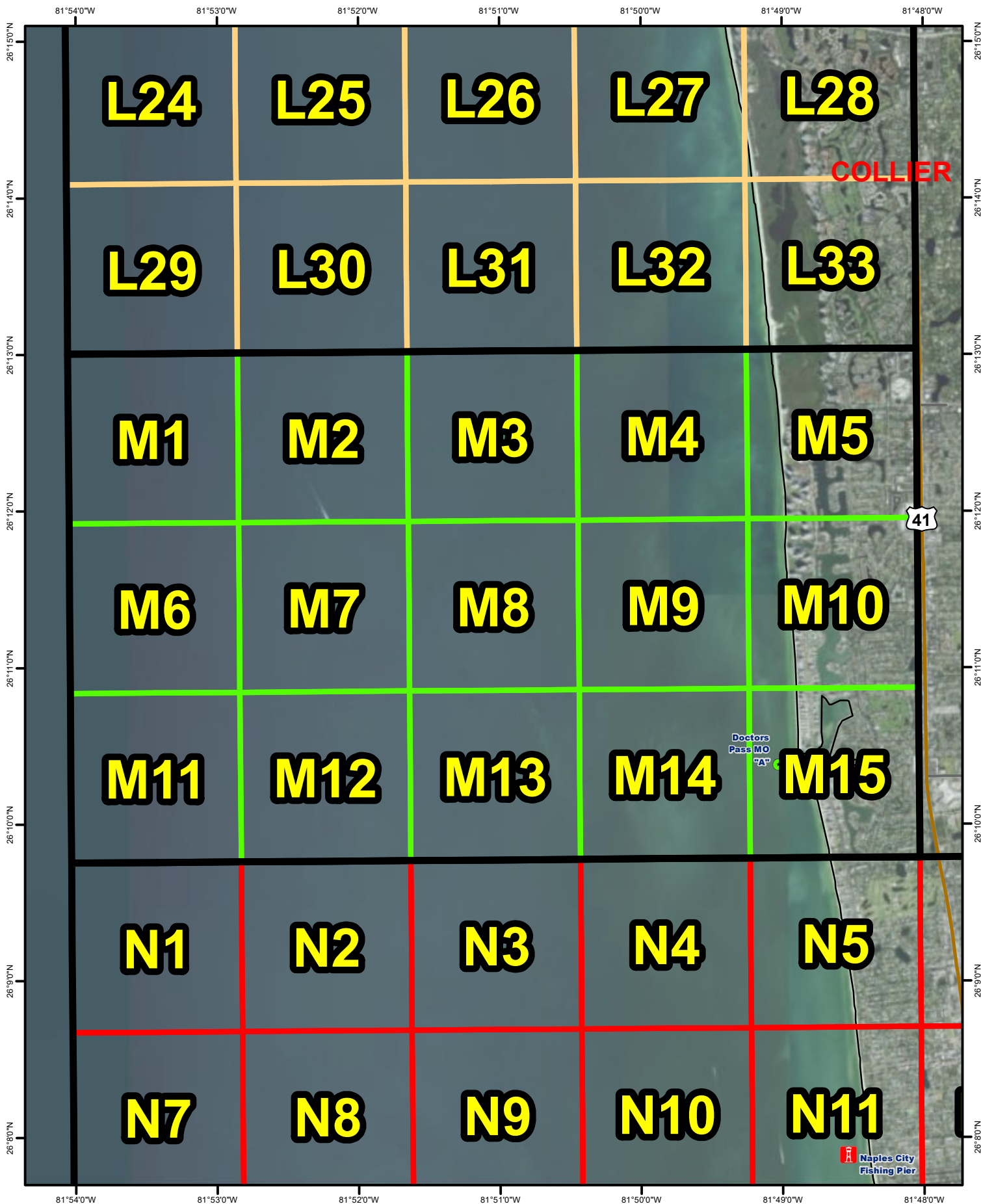


- Beach
- Beach Access
- Boat Ramp
- Bridge
- Landing Site
- Lock
- Landmark
- Marina
- Shoal
- MO "A"

L GRIDS

1 GRID = 1.2 NAUTICAL SQ MILES
 1 GRID = 4 USNG 1000M GRIDS



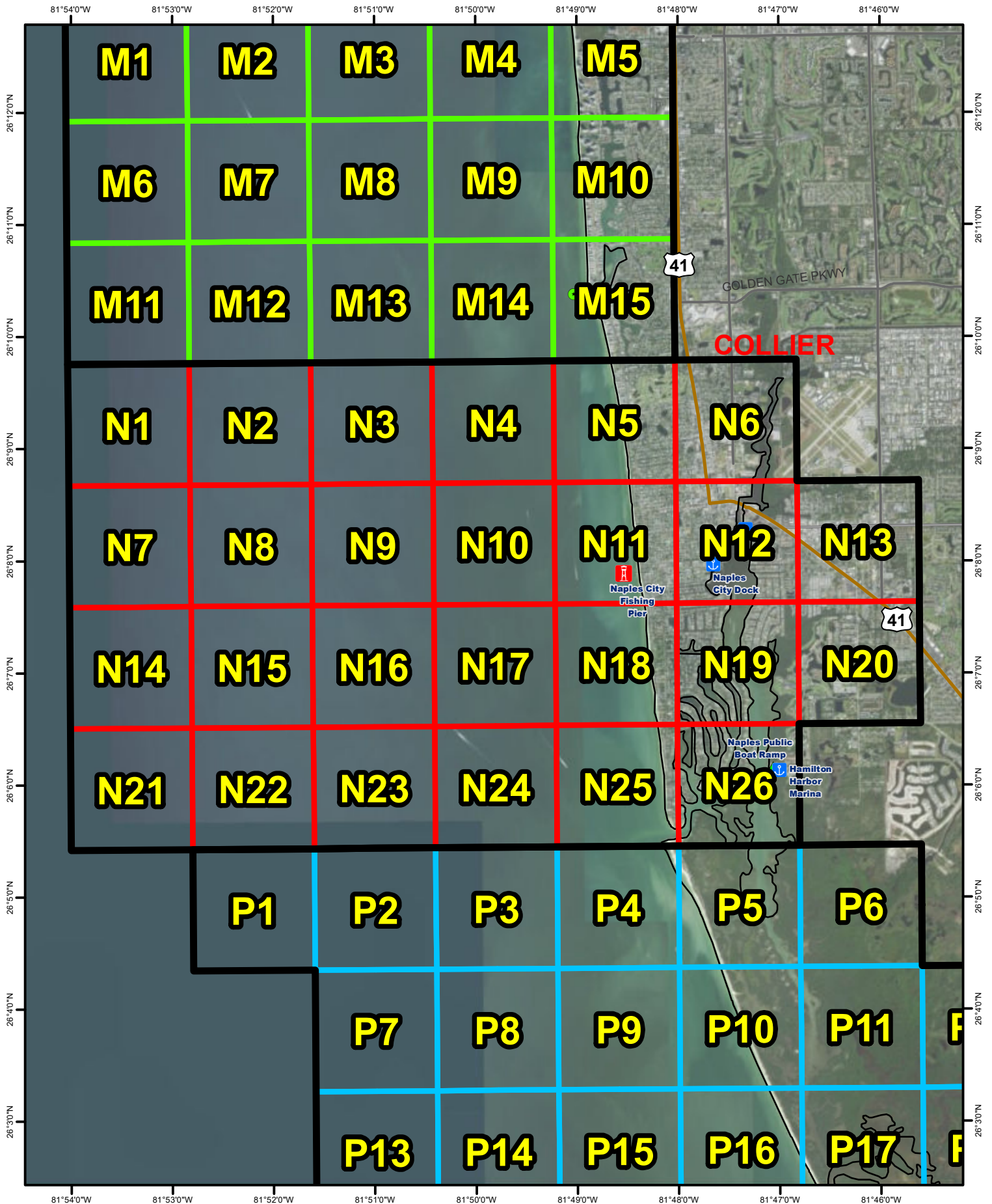


- Beach
- Beach Access
- Boat Ramp
- Bridge
- Landing Site
- Lock
- Landmark
- Marina
- Shoal
- MO "A"

M GRIDS

1 GRID = 1.2 NAUTICAL SQ MILES
 1 GRID = 4 USNG 1000M GRIDS



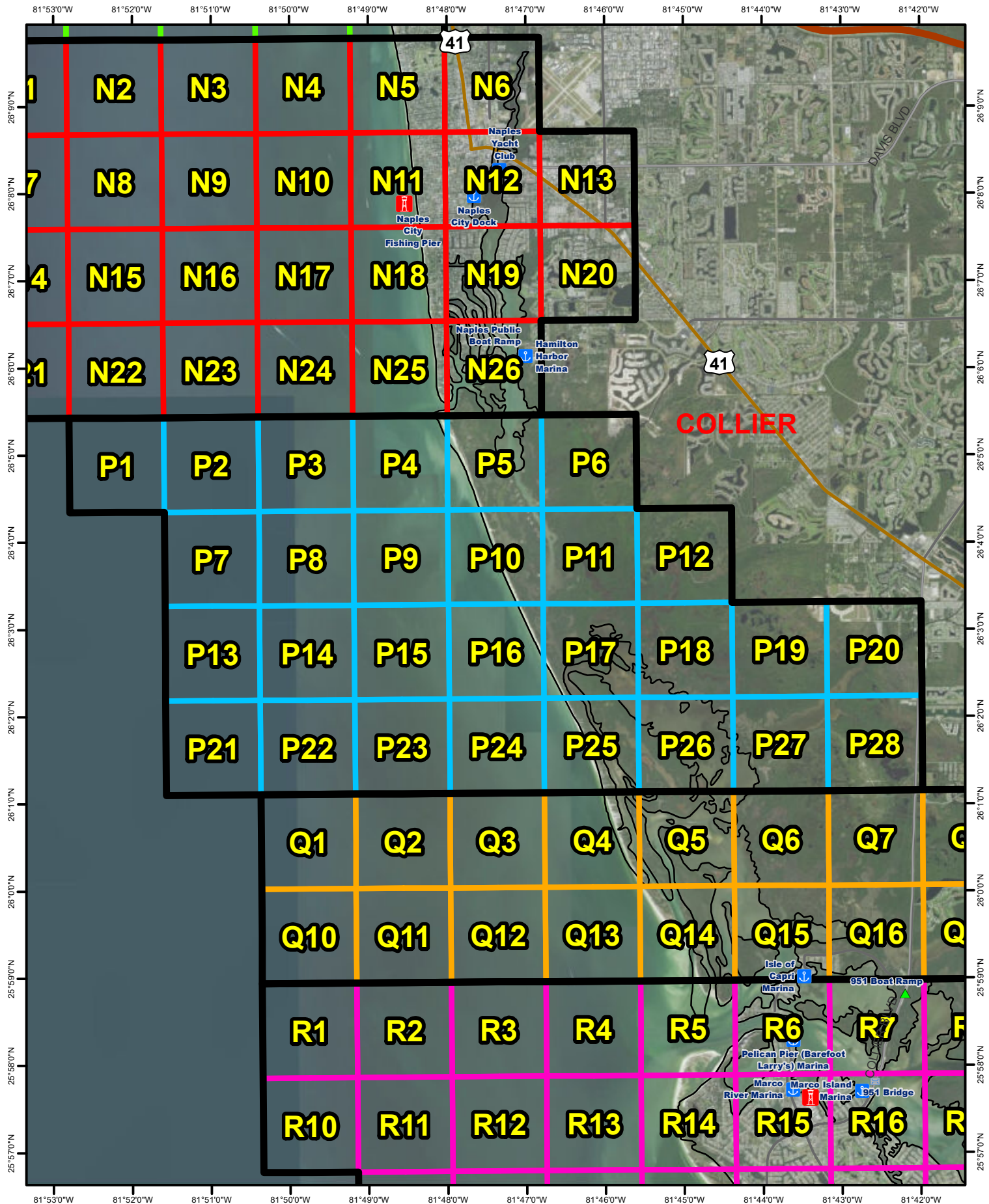


- Beach
- Beach Access
- Boat Ramp
- Bridge
- Landing Site
- Lock
- Landmark
- Marina
- MO "A"
- Shoal

N GRIDS

1 GRID = 1.2 NAUTICAL SQ MILES
 1 GRID = 4 USNG 1000M GRIDS



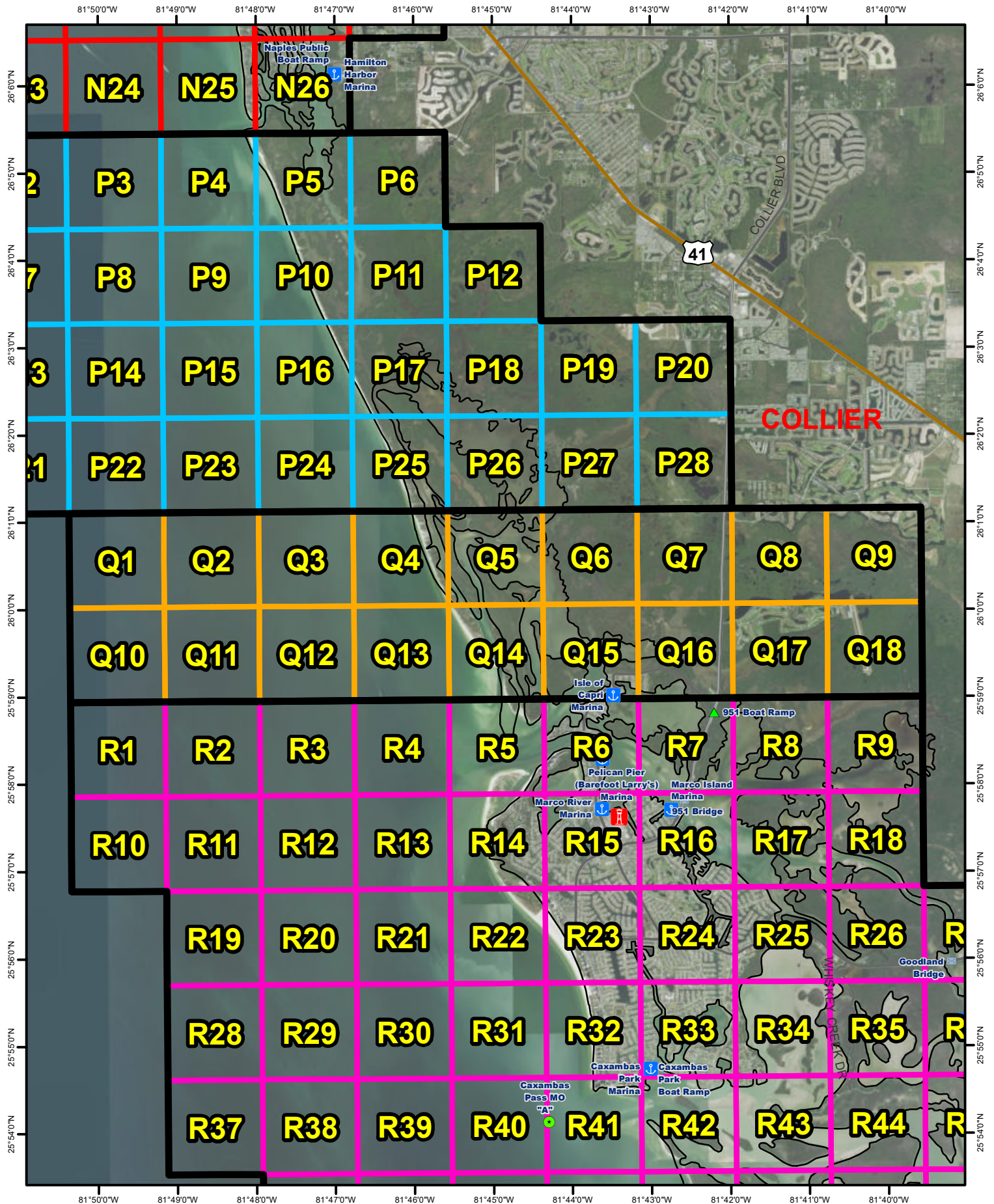


- Beach
- Beach Access
- Boat Ramp
- Bridge
- Landing Site
- Lock
- Landmark
- Marina
- Shoal
- MO "A"

P GRIDS

1 GRID = 1.2 NAUTICAL SQ MILES
 1 GRID = 4 USNG 1000M GRIDS



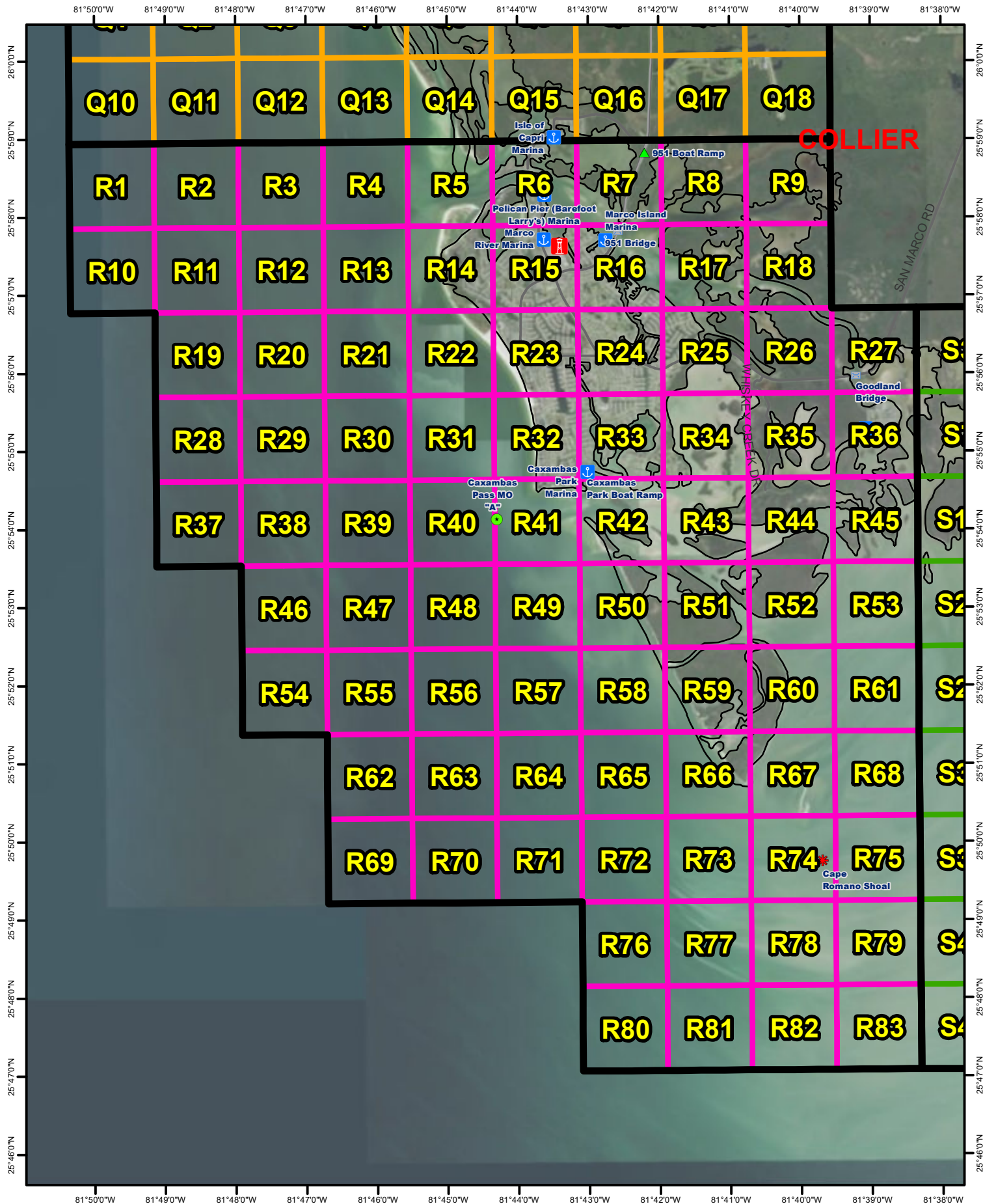


- Beach
- Beach Access
- Boat Ramp
- Bridge
- Landing Site
- Lock
- Landmark
- Marina
- MO "A"
- Shoal

Q GRIDS

1 GRID = 1.2 NAUTICAL SQ MILES
 1 GRID = 4 USNG 1000M GRIDS





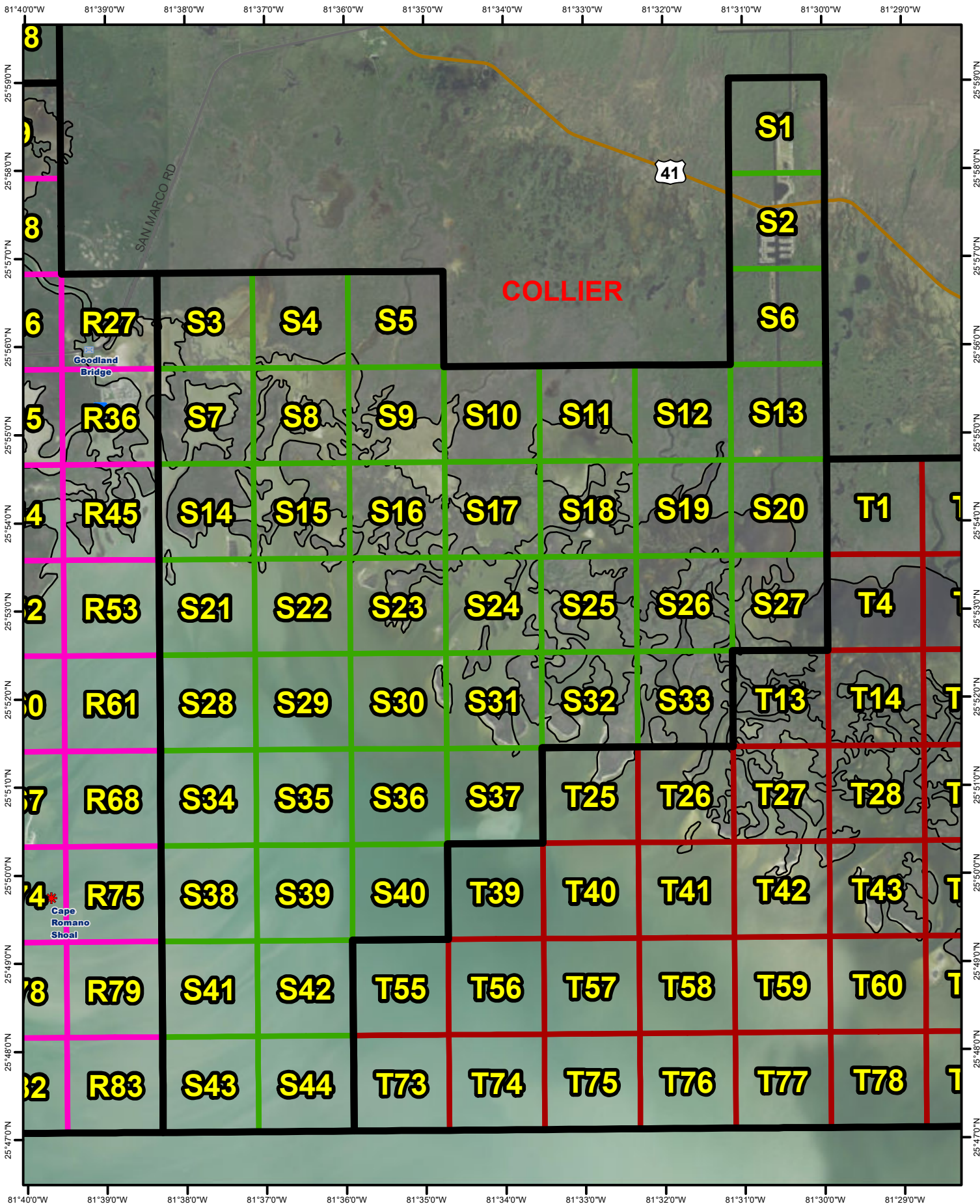
COLLIER

R GRIDS

1 GRID = 1.2 NAUTICAL SQ MILES
 1 GRID = 4 USNG 1000M GRIDS



OCT 2019

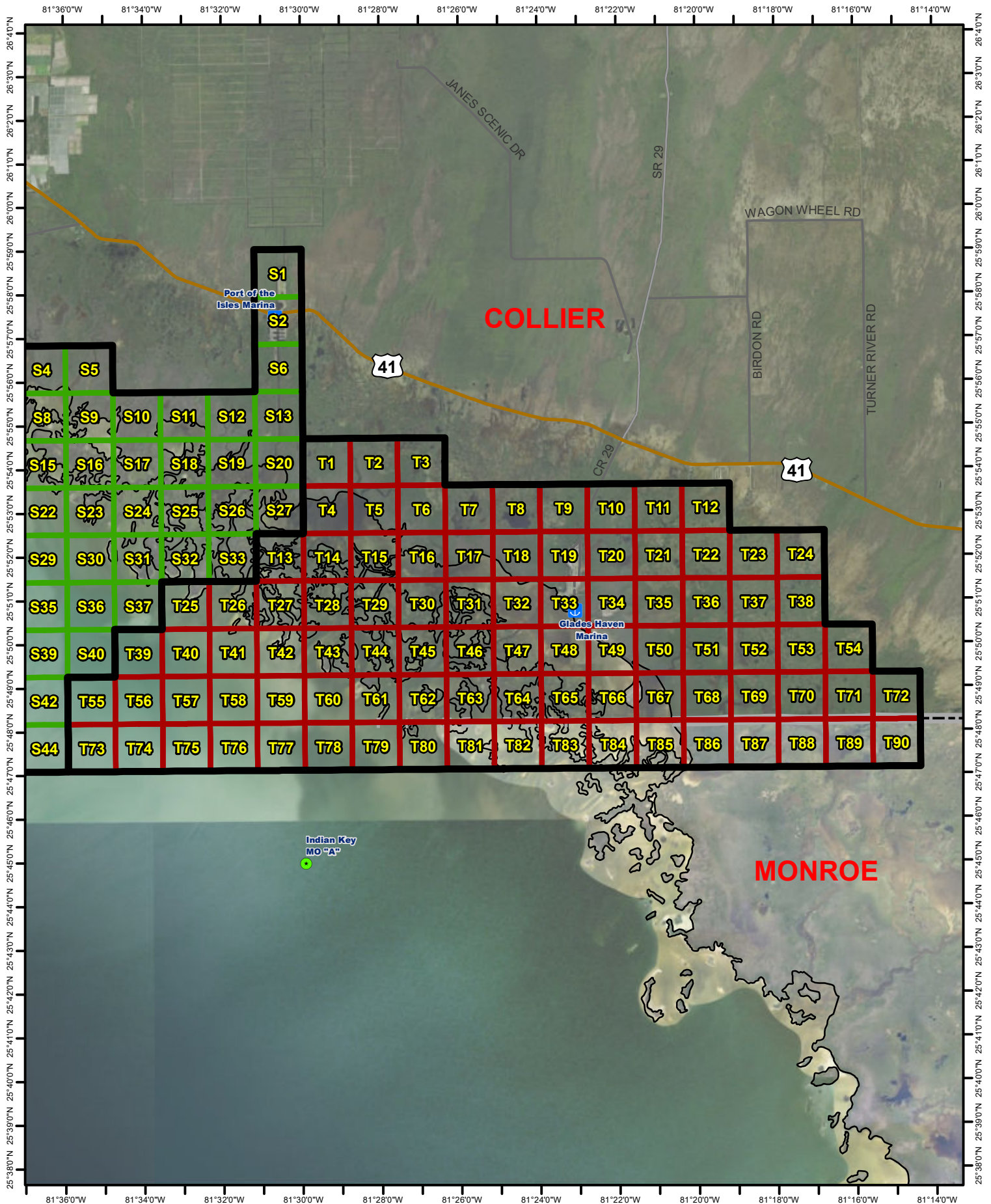


- Beach
- Beach Access
- Boat Ramp
- Bridge
- Landing Site
- Lock
- Landmark
- Marina
- Shoal
- MO "A"

S GRIDS

1 GRID = 1.2 NAUTICAL SQ MILES
 1 GRID = 4 USNG 1000M GRIDS





- Beach
- Beach Access
- Boat Ramp
- Bridge
- Landing Site
- Lock
- Landmark
- Marina
- MO "A"
- Shoal

T GRIDS

1 GRID = 1.2 NAUTICAL SQ MILES
 1 GRID = 4 USNG 1000M GRIDS

