

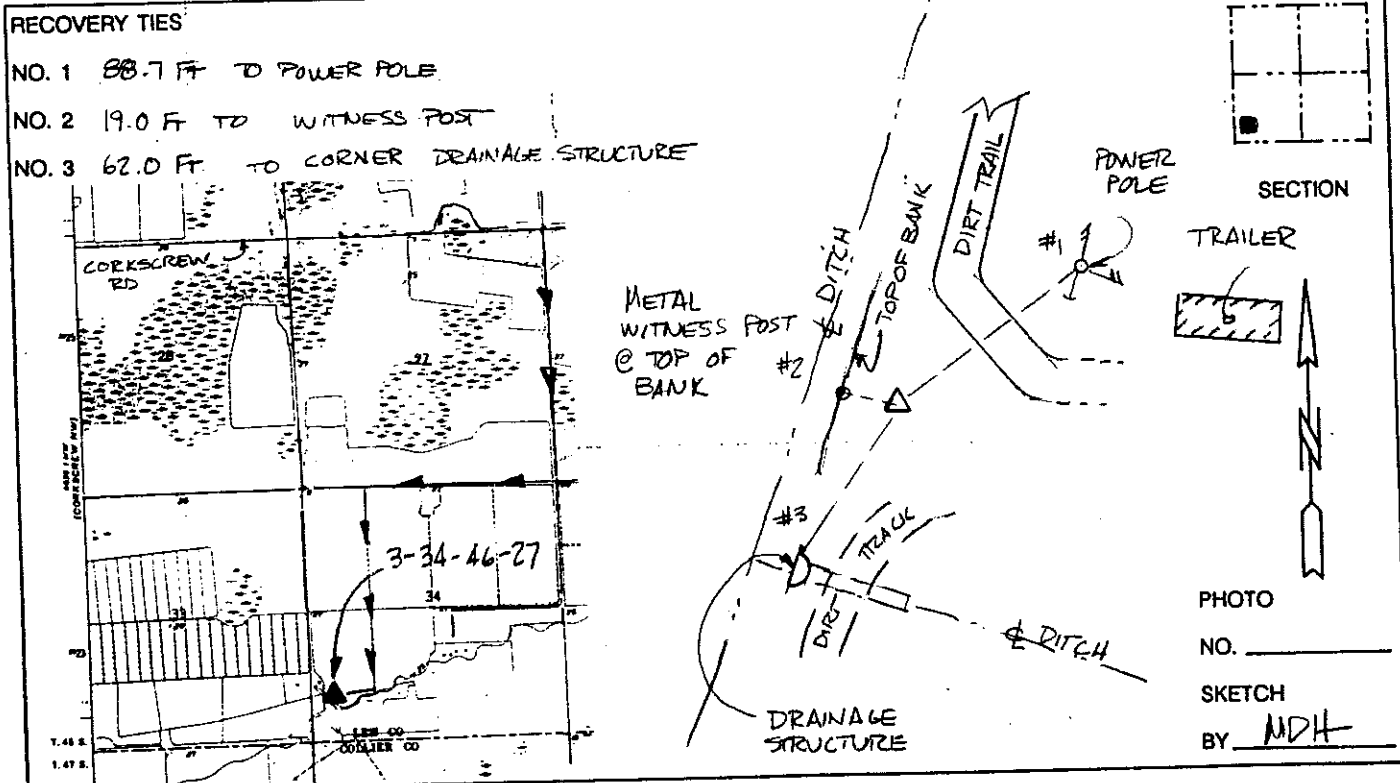
LEE COUNTY SURVEY MARK DESCRIPTION



SURVEY CONTROL BY:
DENI ASSOCIATES, INC.
FORT MYERS, FLORIDA

MAPPING BY:
WOOLPERT CONSULTANTS

DESIGNATION 3-34-46-27 ^{GPS} (9086) COUNTY LEE STATE FL
 LOCATED IN SEC 34 TWP 46S RGE 27E USGS QUAD MAP CORKSCREW
 TO REACH SURVEY MARK FROM THE INTERSECTION OF CORKSCREW RD & A ROAD TO THE
SOUTH NEAR THE NE CORNER OF SECTION 27; THENCE SOUTH ALONG ROAD
1.0 MI ±; THENCE WEST 0.65 MI ±; THENCE SOUTH 0.8 MI ±; THENCE WEST
0.2 MI ± TO MARK
 TYPE OF 3" DIAMETER ALUMINUM DISK IN CONCRETE; LEE COUNTY
 MARK DENI ASSOCIATES 1990 DATE SET 1990
 HORIZONTAL CONTROL ORIGINATED ON 1st ORDER HORIZONTAL CONTROL ORIGINATED ON _____ ORDER
 CONTROL BASED ON FLORIDA HIGH PRECISION GPS NETWORK, CONTROL BY _____
 ON _____ DATUM
 ON NORTH AMERICAN DATUM OF 1983, 1990 ADJUSTMENT COORDINATES (FT), 1st ORDER COORDINATES (FT), _____ ORDER
 NORTHING (Y) 759,841.000 NORTHING (Y) _____
 EASTING (X) 783,755.907 EASTING (X) _____
 GRID FLORIDA TRANSVERSE MERCATOR RECOVERED BY _____
 ZONE WEST SCALE FACTOR .999960 DATE, CONDITION _____
 FIELD BOOK _____ PAGE _____



VERTICAL CONTROL ORIGINATED ON 2nd ORDER CONTROL ESTABLISHED BY N. G. S. AND F. D. O. T.
 ON NATIONAL GEODETIC VERTICAL DATUM OF 1929.
 ELEVATION (FT) _____ 3rd ORDER LEVEL BOOK _____ PAGE _____