

LEE COUNTY SURVEY MARK DESCRIPTION



SURVEY CONTROL BY:
DENI ASSOCIATES, INC.
FORT MYERS, FLORIDA

MAPPING BY:
WOOLPERT CONSULTANTS

DESIGNATION JE1 46-26-22-01 (9079) ^{GPS} COUNTY LEE STATE FL
 LOCATED IN SEC 22 TWP 46S RGE 26E USGS QUAD MAP CORKSCREW NW
 TO REACH SURVEY MARK FROM THE INTERSECTION OF ALICO RD & CORKSCREW
RD & GO NORTH 0.7 MI ± ON ALICO RD.

TYPE OF 4" x 4" CONK MONUMENT ; JOHNSON ENGINEERING, INC.
 MARK LB 642 DATE SET 1990

HORIZONTAL CONTROL ORIGINATED ON 1st ORDER HORIZONTAL CONTROL ORIGINATED ON _____ ORDER
 CONTROL BASED ON FLORIDA HIGH PRECISION GPS NETWORK, CONTROL BY _____
 ON NORTH AMERICAN DATUM OF 1983, 1990 ADJUSTMENT ON _____ DATUM
 COORDINATES (FT), 1st ORDER COORDINATES (FT), _____ ORDER
 NORTHING (Y) 774,079.883 NORTHING (Y) _____
 EASTING (X) 752,689.774 EASTING (X) _____

GRID FLORIDA TRANSVERSE MERCATOR RECOVERED BY DENI ASSOCIATES
 ZONE WEST SCALE FACTOR .999952 DATE, CONDITION 2-91
 FIELD BOOK _____ PAGE _____ GOOD

RECOVERY TIES

- NO. 1 87.9 FT TO CHISELED "D"
- NO. 2 10.0 FT TO FENCE
- NO. 3 22.6 FT TO EDGE PAVEMENT

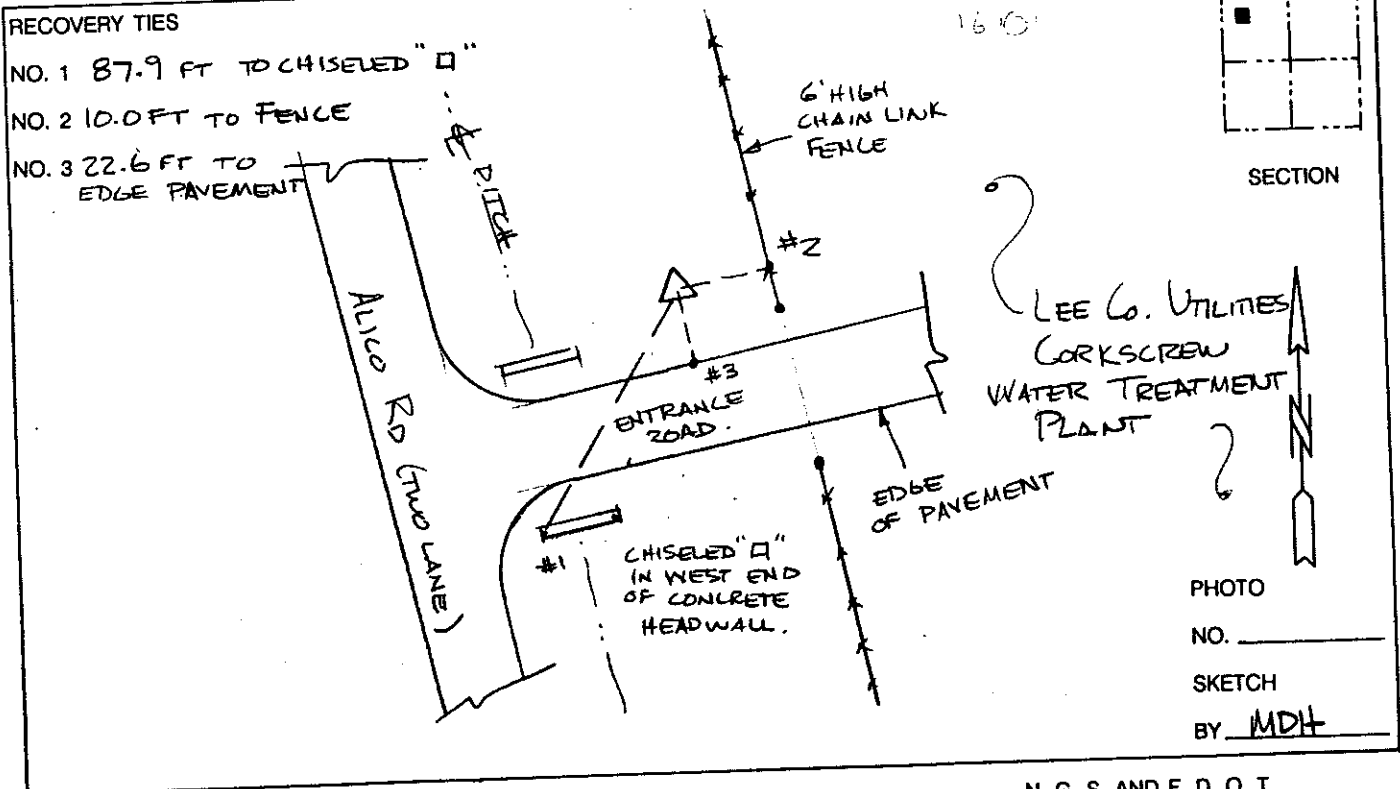


PHOTO NO. _____
 SKETCH BY MDH

VERTICAL CONTROL ORIGINATED ON 2nd ORDER CONTROL ESTABLISHED BY N. G. S. AND F. D. O. T.

ON NATIONAL GEODETIC VERTICAL DATUM OF 1929.
 ELEVATION (FT) _____ 3rd ORDER LEVEL BOOK _____ PAGE _____