

# LEE COUNTY SURVEY MARK DESCRIPTION



SURVEY CONTROL BY:  
DENI ASSOCIATES, INC.  
FORT MYERS, FLORIDA

MAPPING BY:  
WOOLPERT CONSULTANTS

DESIGNATION JEI 46-26-08-02 (9078) COUNTY LEE STATE FL  
 LOCATED IN SEC 08 TWP 46S RGE 26E USGS QUAD MAP CORKSCREW NW  
 TO REACH SURVEY MARK FROM THE INTERSECTION OF I-75 & ALICO RD;  
GO 3.8 MI± EAST ON ALICO RD.

TYPE OF 4"x4" CONCRETE MONUMENT WITH 3" BRASS DISK ; "LB642"  
 MARK 0.2 FT BELOW GROUND DATE SET 1990

HORIZONTAL CONTROL ORIGINATED ON 1st ORDER HORIZONTAL CONTROL ORIGINATED ON \_\_\_\_\_ ORDER  
 CONTROL BASED ON FLORIDA HIGH PRECISION GPS NETWORK, CONTROL BY \_\_\_\_\_  
 ON NORTH AMERICAN DATUM OF 1983, 1990 ADJUSTMENT ON \_\_\_\_\_ DATUM  
 COORDINATES (FT), 1st ORDER COORDINATES (FT), \_\_\_\_\_ ORDER

NORTHING (Y) 785,057.307  
 EASTING (X) 743,714.227

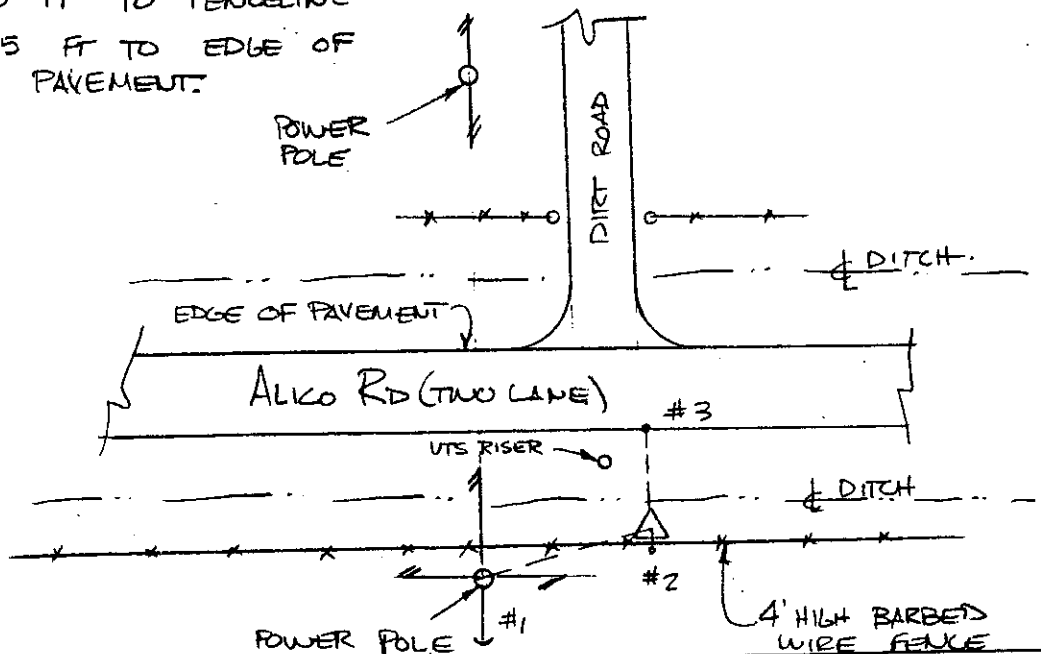
NORTHING (Y) \_\_\_\_\_  
 EASTING (X) \_\_\_\_\_

GRID FLORIDA TRANSVERSE MERCATOR  
 ZONE WEST SCALE FACTOR .999950  
 FIELD BOOK \_\_\_\_\_ PAGE \_\_\_\_\_

RECOVERED BY DENI ASSOCIATES  
 DATE, CONDITION 2-91  
GOOD

**RECOVERY TIES**

- NO. 1 32.0 FT TO POWER POLE
- NO. 2 2.0 FT TO FENCELINE
- NO. 3 33.5 FT TO EDGE OF PAVEMENT.



SECTION  
 PHOTO NO. \_\_\_\_\_  
 SKETCH BY MDH

VERTICAL CONTROL ORIGINATED ON 2nd ORDER CONTROL ESTABLISHED BY \_\_\_\_\_ N. G. S. AND F. D. O. T.  
 ON NATIONAL GEODETIC VERTICAL DATUM OF 1929.  
 ELEVATION (FT) \_\_\_\_\_, 3rd ORDER LEVEL BOOK \_\_\_\_\_ PAGE \_\_\_\_\_