

LEE COUNTY SURVEY MARK DESCRIPTION



SURVEY CONTROL BY:
DENI ASSOCIATES, INC.
FORT MYERS, FLORIDA

MAPPING BY:
WOOLPERT CONSULTANTS

DESIGNATION JEL 46-26-02-01 (9077) COUNTY LEE STATE FL
 LOCATED IN SEC 2 TWP 46S RGE 26E USGS QUAD MAP ALVA SW
 TO REACH SURVEY MARK FROM THE INTERSECTION OF GREEN MEADOW RD
& IMMOKALEE RD (SR82) ; GO SOUTH ALONG GREEN MEADOW
ROAD 3.7 mi± TO MARK.

TYPE OF 4"X4" CONCRETE MONUMENT w/ 3" BRASS DISK 0.5 FT BELOW GROUND;
 MARK "LB642" DATE SET 1990

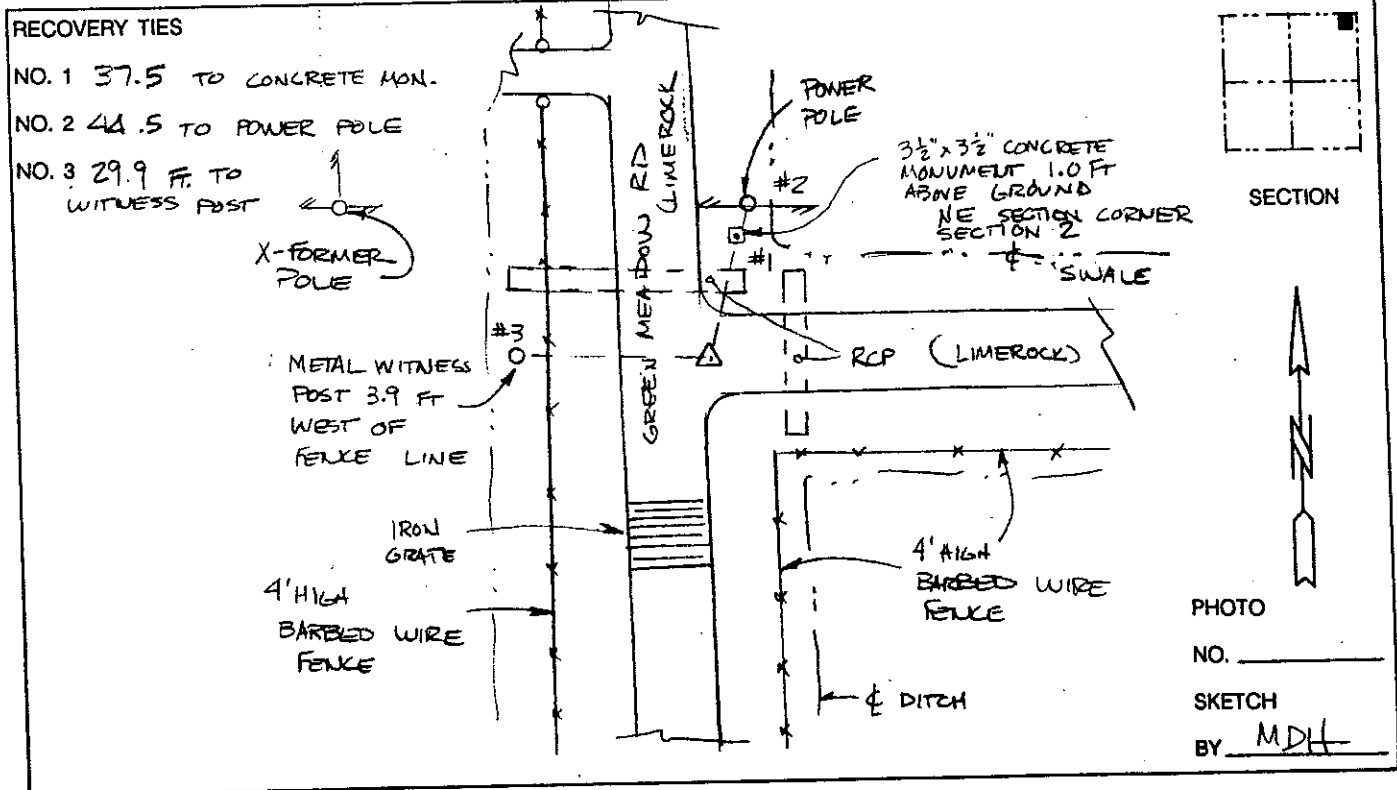
HORIZONTAL CONTROL ORIGINATED ON 1st ORDER HORIZONTAL CONTROL ORIGINATED ON _____ ORDER
 CONTROL BASED ON FLORIDA HIGH PRECISION GPS NETWORK, CONTROL BY _____
 ON NORTH AMERICAN DATUM OF 1983, 1990 ADJUSTMENT ON _____ DATUM
 COORDINATES (FT), 1st ORDER COORDINATES (FT), _____ ORDER

NORTHING (Y) 791,916.474
 EASTING (X) 761,764.766

NORTHING (Y) _____
 EASTING (X) _____

GRID FLORIDA TRANSVERSE MERCATOR
 ZONE WEST SCALE FACTOR .999954
 FIELD BOOK _____ PAGE _____

RECOVERED BY DENI ASSOCIATES
 DATE, CONDITION 2-91
GOOD



VERTICAL CONTROL ORIGINATED ON 2nd ORDER CONTROL ESTABLISHED BY N. G. S. AND F. D. O. T.

ON NATIONAL GEODETIC VERTICAL DATUM OF 1929.

ELEVATION (FT) _____, 3rd ORDER

LEVEL BOOK _____ PAGE _____